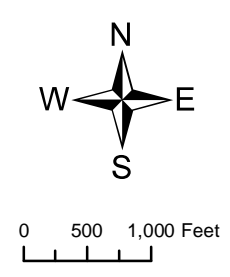
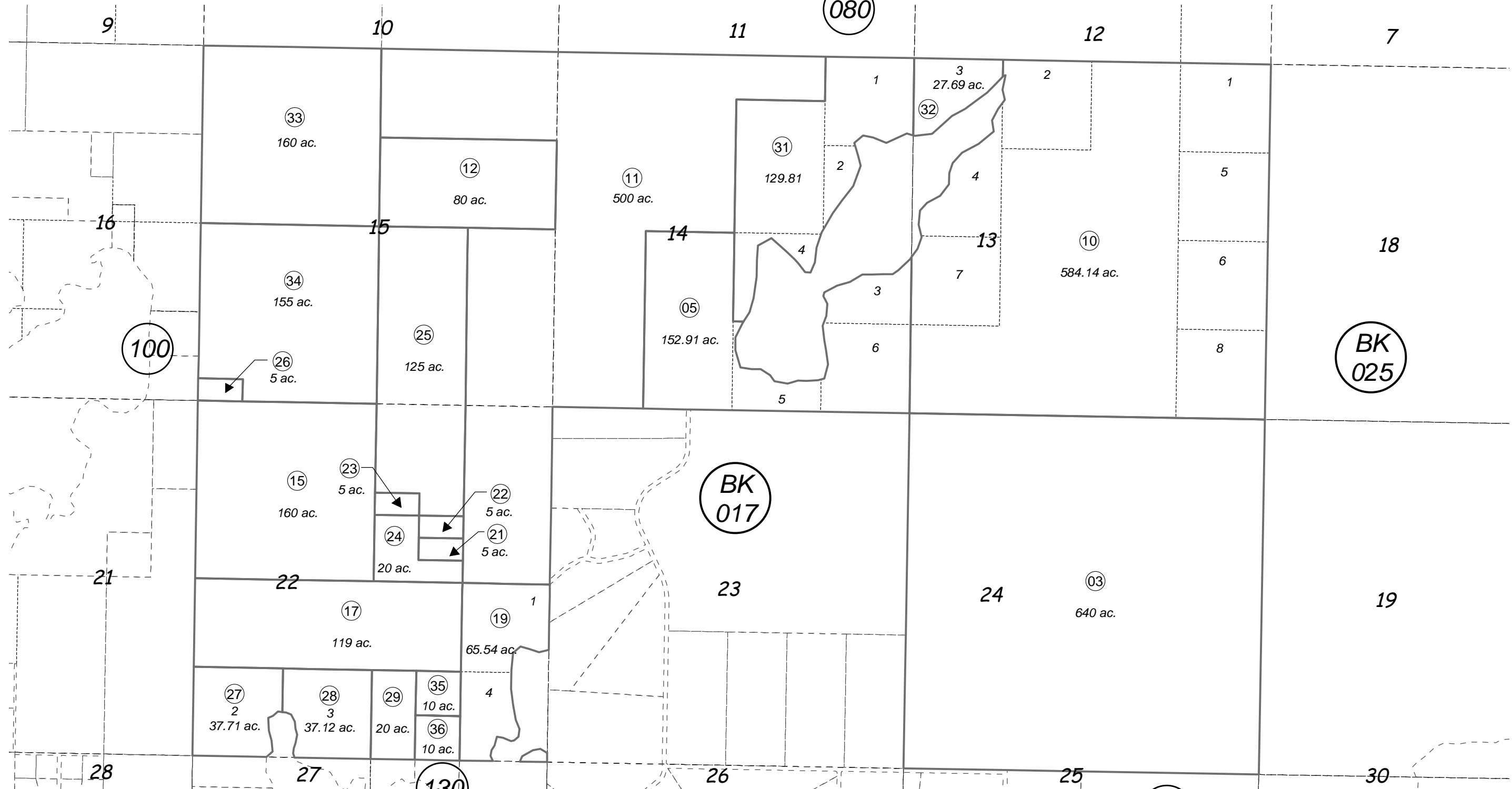


SEC. 13,14,15,22,23,24, T07N, R11W, S.M.

013-110



AUGUST 29, 2014

For 2015 assessment roll		
Delete	Add	Revise
To		
30	35,36	

Assessor's Map
Kenai Peninsula Borough

This map is prepared for Kenai Peninsula Borough Assessing Dept. use only and is not intended for conveyance nor is it a survey.

Note- Assessor's block Numbers Shown in Elipses
Assessor's Parcel Numbers Shown in Circles