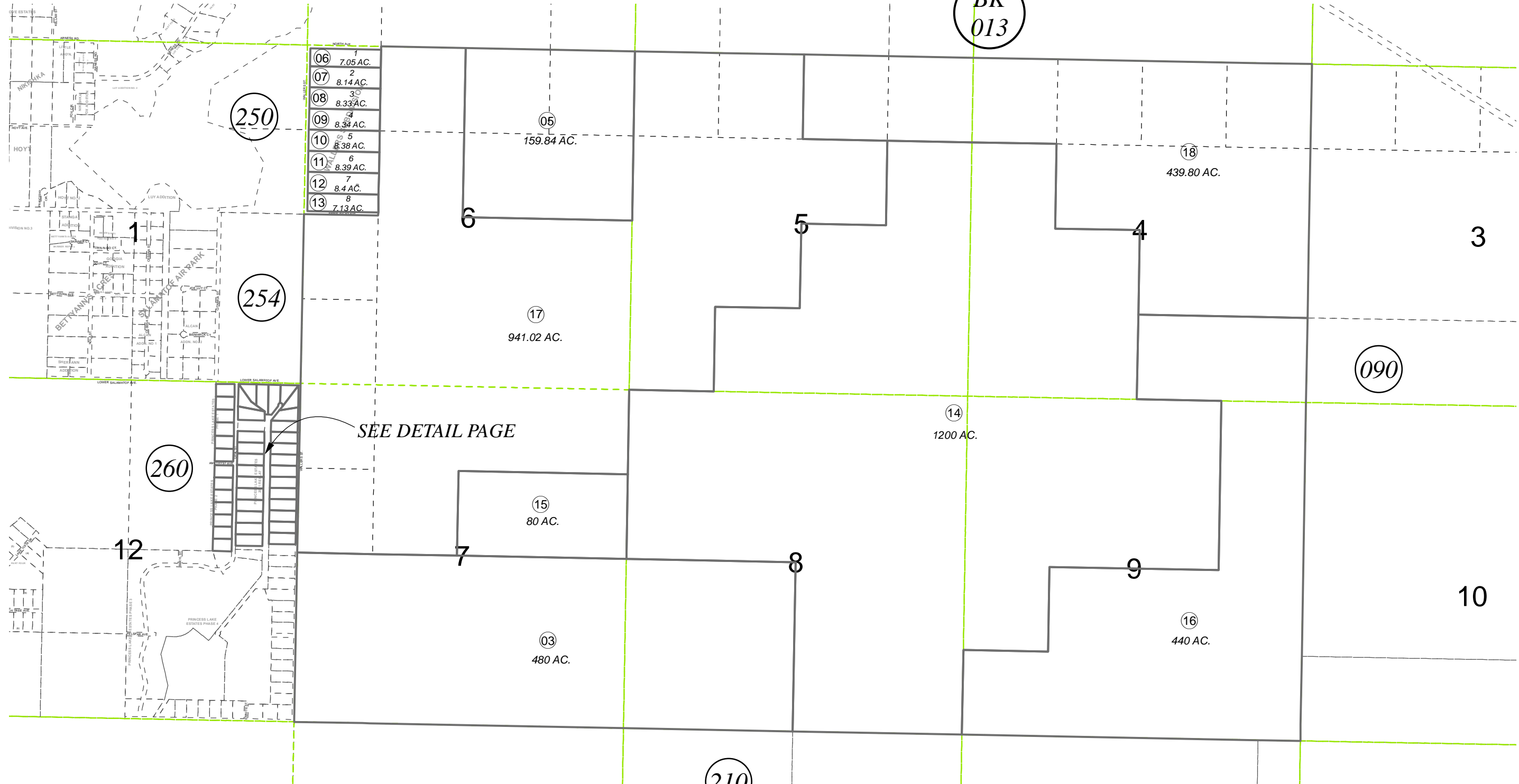


SEC. 4-9 & POR. SEC. 12, T06N, R11W, S.M.

017-080



SEE DETAIL PAGE



0 500 1,000 2,000 Feet

JULY 2, 2014

For 2015 assessment roll		
Delete	Add	Revise
To		
51	017-265+	

Assessor's Map
Kenai Peninsula Borough

WALLERS SUB KN0730035
 PRINCESS LAKE ESTATES PHASE 1 KN2009088
 PRINCESS LAKE ESTATES PHASE 2 KN2010006
 PRINCESS LAKE ESTATES 2011 REPLAT KN2011090

This map is prepared for Kenai Peninsula Borough Assessing Dept. use only and is not intended for conveyance nor is it a survey.
 Note- Assessor's block Numbers Shown in Ellipses
 Assessor's Parcel Numbers Shown in Circles