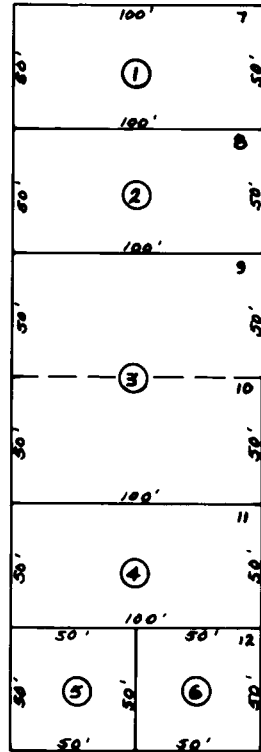


24



THIRD

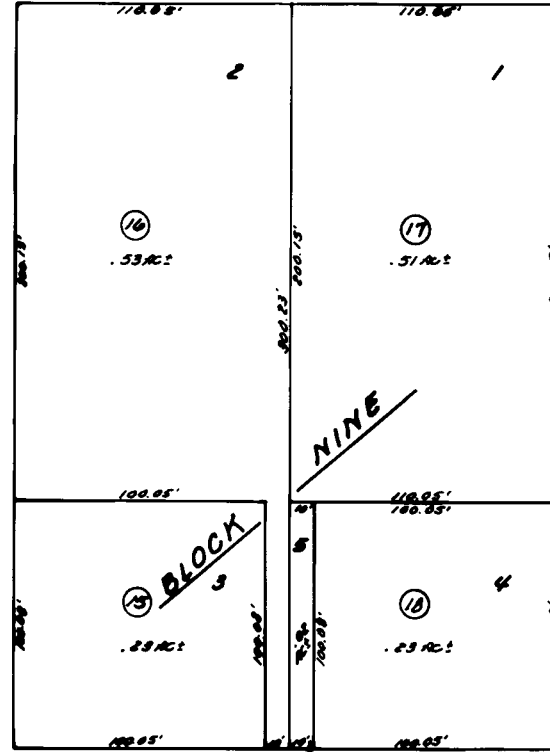


BLOCK 8

ALLEY

A

FOURTH



STREET

FIFTH

32

FEDERAL ADDITION

BK 148

DEPENDENT RESURVEY OF PAR. U33 1116  
FEDERAL ADDITION TO SEWARD  
SUBDIVISION OF BLK. 9 INTO LTS. 1 TO 5

Assessor's Map  
Kenai Peninsula Borough, Alaska

NOTE - Assessor's Block Numbers Shown in Ellipses  
Assessor's Parcel Numbers Shown in Circles