

GOV'T. LOTS 3 & 4, T05N, R09W, S.M.

063-290

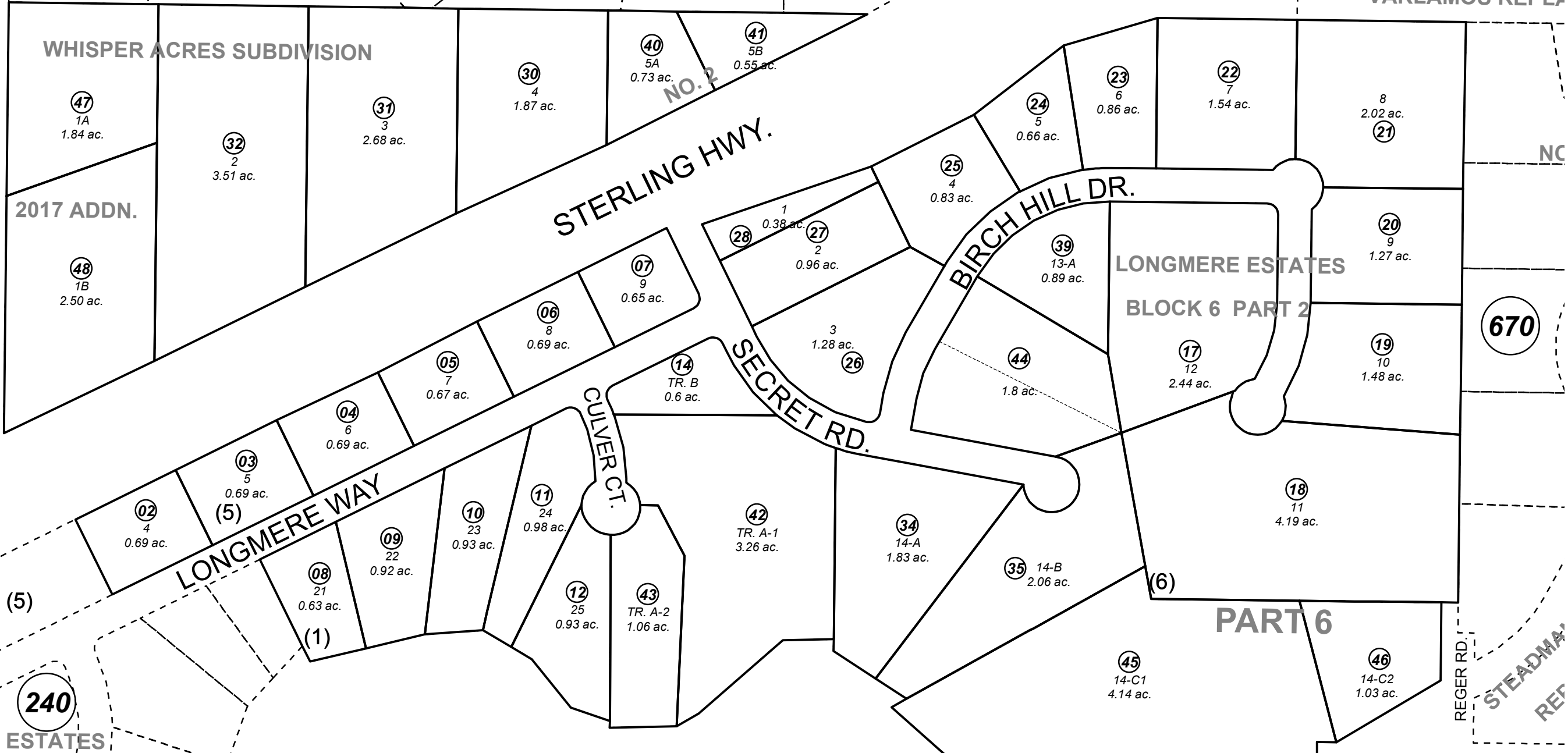
LAKE VIEW TERRACE

291

291

(3) VARLAMOS REPLA

WHISPER ACRES SUBDIVISION



600

WHISPER LAKE ST.

2017 ADDN.

STERLING HWY.

BIRCH HILL DR.

SECRET RD.

CULVER CT.

LONGMERE WAY

LONGMERE ESTATES

BLOCK 6 PART 2

PART 6

LONGMERE LAKE

670

240

LONGMERE ESTATES

PART 1

REGER RD. STEADMA REF

511

AUGUST 21, 2017

For 2018 assessment roll

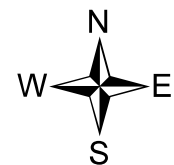
Delete	Add	Revise
	To	
33	47,48	

Assessor's Map
Kenai Peninsula Borough

LONGMERE ESTATES SUB PART 2 KN0730026
 LONGMERE ESTATES SUB PART 2 BLOCK 6 KN0730043
 WHISPER ACRES SUB KN0730069
 LONGMERE ESTATES SUB PART 2 RESUB LOT 14 KN0770183
 LONGMERE ESTATES SUB PART 2 RESUB LOT 13 KN0880005
 WHISPER ACRES SUB NO 2 KN0900064
 LONGMERE ESTATES SUB PART 5 KN0930084
 LONGMERE ESTATES SUB PART 6 KN2002100
 WHISPER ACRES SUB 2017 ADDN KN2017040

This map is prepared for Kenai Peninsula Borough Assessing Dept. use only and is not intended for conveyance nor is it a survey.

Note- Assessor's block Numbers Shown in Ellipses
Assessor's Parcel Numbers Shown in Circles



1 inch = 200 feet