

- FBO SUB KN0780225
- FBO SUB NO 3 KN0840198
- FBO SUB SOUTH ADDN KN0840218
- FBO SUB SOUTH ADDN NO 2 KN0860186
- BARON PARK SUB NO 6 KN0870035
- FBO SUB NO 4 KN0900062
- FBO SUB NO 5 KN0920060
- FBO SUB NO 6 KN0970034
- FBO SUB NO 07 KN2001034
- BARON PARK KENAI YOUTH ADDN KN2001056
- FBO SUB GLM ADDN KN2003060
- FBO SUB NO 8 KN2004085
- BARON PARK 2006 REPLAT KN2006025
- FBO SUB 2ND ADDN KN2007145
- FBO SUB FED EX ADDN KN2008111
- FBO SUB NO 9 KN2009054
- FBO SUB 2018 REPLAT KN2019002
- FBO SUB NO 11 KN2021044

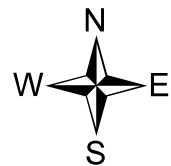
FEBRUARY 4, 2022

For 2022 assessment roll

Delete	Add	Revise
--------	-----	--------

To		
43	043-180+	49

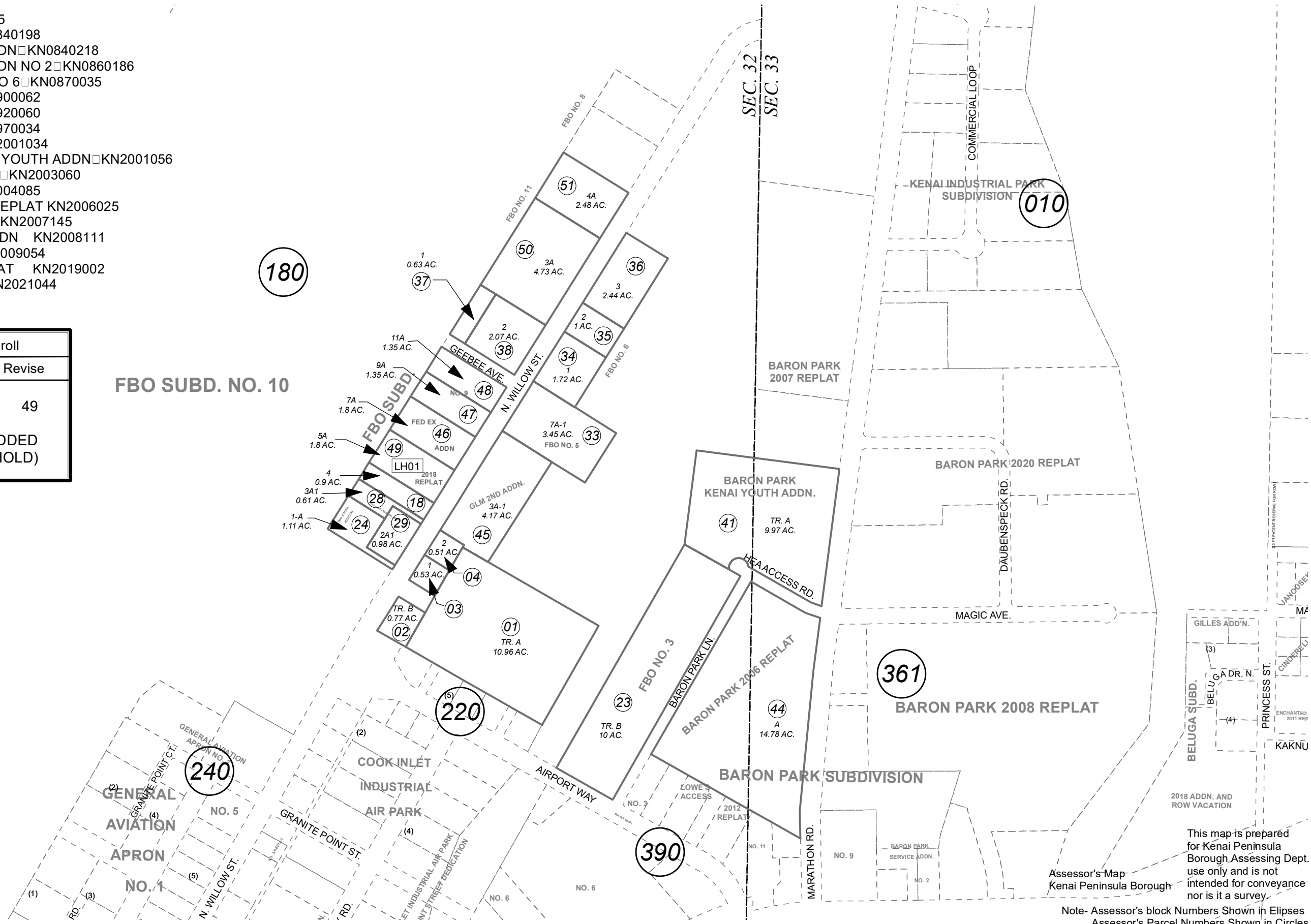
(ADDED LEASEHOLD)



0 200 400 Feet

FBO SUBD. NO. 10

180



This map is prepared for Kenai Peninsula Borough Assessing Dept. use only and is not intended for conveyance nor is it a survey.

Assessor's Map
Kenai Peninsula Borough

Note- Assessor's block Numbers Shown in Ellipses
Assessor's Parcel Numbers Shown in Circles