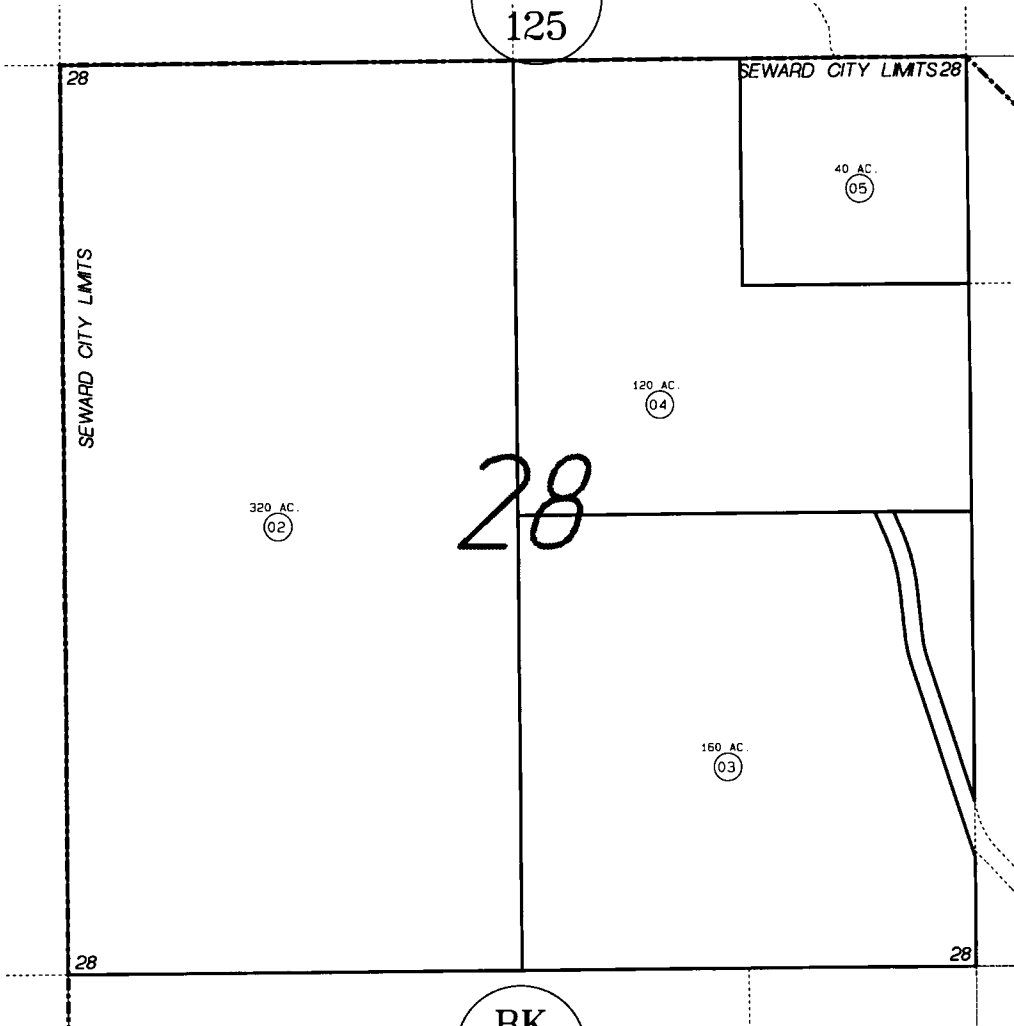


SEC. 28, T1N, R1W, SEWARD MERIDIAN

144-240

BK
125



BK
125

3

BK
145



DATE: FEB. 28, 2001

FOR 19_01 ASSESSMENT ROLL

DELETE	ADD	REVISED
1	TO	4,5

Assessor's Map
Kenai Peninsula Borough

THIS MAP IS PREPARED
FOR KENAI PENINSULA
BOROUGH ASSESSING DEPT.
USE ONLY AND IS NOT
INTENDED FOR ANY
OTHER USE OR REPRESENTATION

NOTE - Assessor's Block Numbers Shown In Ellipses
Assessor's Parcel Numbers Shown In Circles