

172-460

W 1/2 NE 1/4 SEC. 27, T05S, R12W, S.M.

132

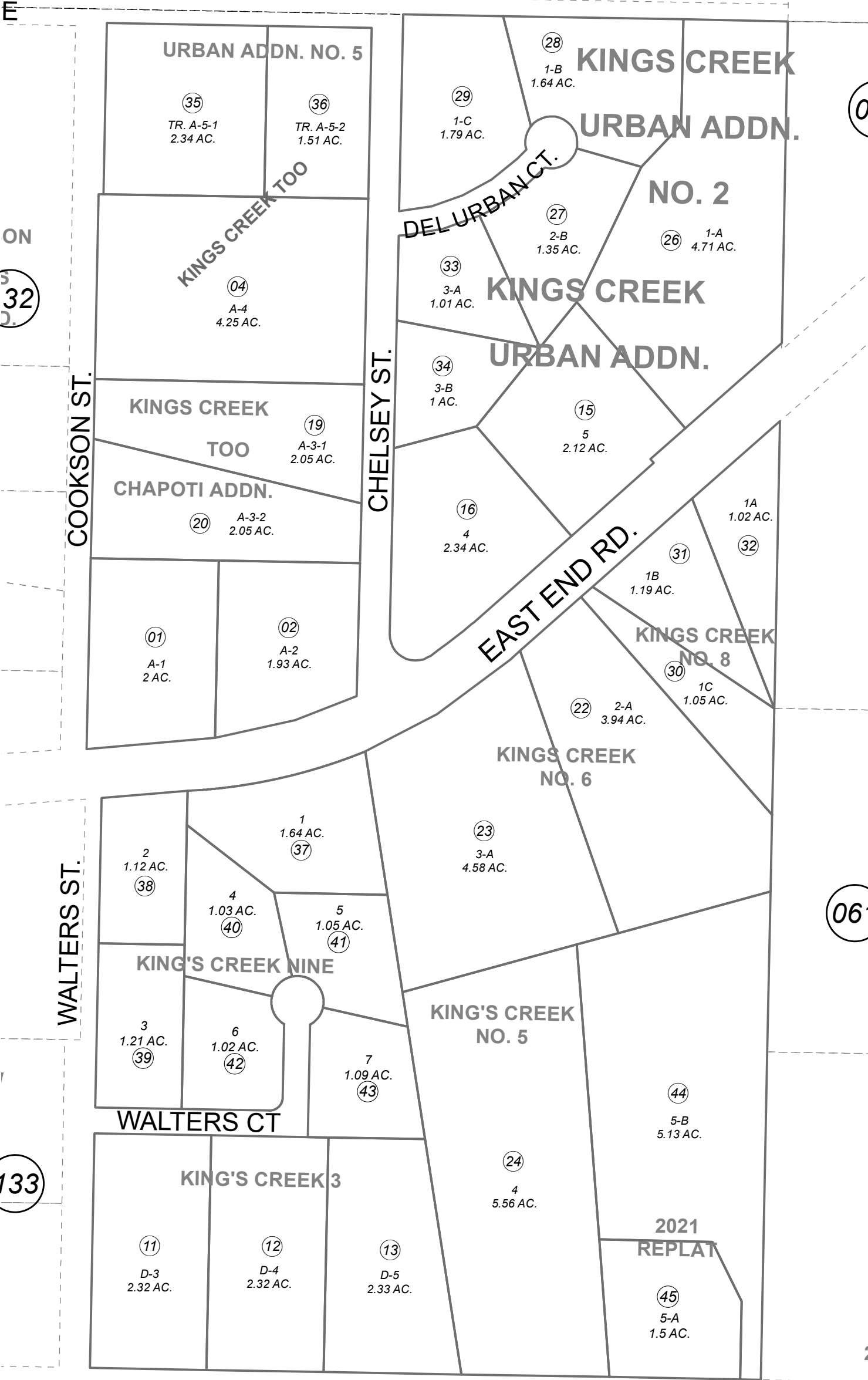
133

410

140

060

061



This map is prepared for Kenai Peninsula Borough Assessing Dept. use only and is not intended for conveyance nor is it a survey.

Note- Assessor's block Numbers Shown in Ellipses Assessor's Parcel Numbers Shown in Circles

- KING'S CREEK TOO SUB HM0820026
- KING'S CREEK SUB NO 3 HM0820069
- KING'S CREEK SUB URBAN ADDN HM0830023
- KING'S CREEK TOO SUB CHAPOTI ADDN HM0840027
- KING'S CREEK SUB NO 5 HM0840079
- KING'S CREEK SUB NO 6 HM0850002
- KING'S CREEK SUB URBAN ADDN NO 2 HM0860102
- KING'S CREEK SUB NO 8 HM0870054
- KING'S CREEK URBAN ADDN NO 3 HM0990024
- KING'S CREEK URBAN ADDN NO 5 HM2006009
- KING'S CREEK NINE SUB HM2006031
- KING'S CREEK 2021 REPLAT HM2021056

Assessor's Map Kenai Peninsula Borough



DECEMBER 7, 2021		
For 2022 assessment roll		
Delete	Add	Revise
	To	
25	44,45	