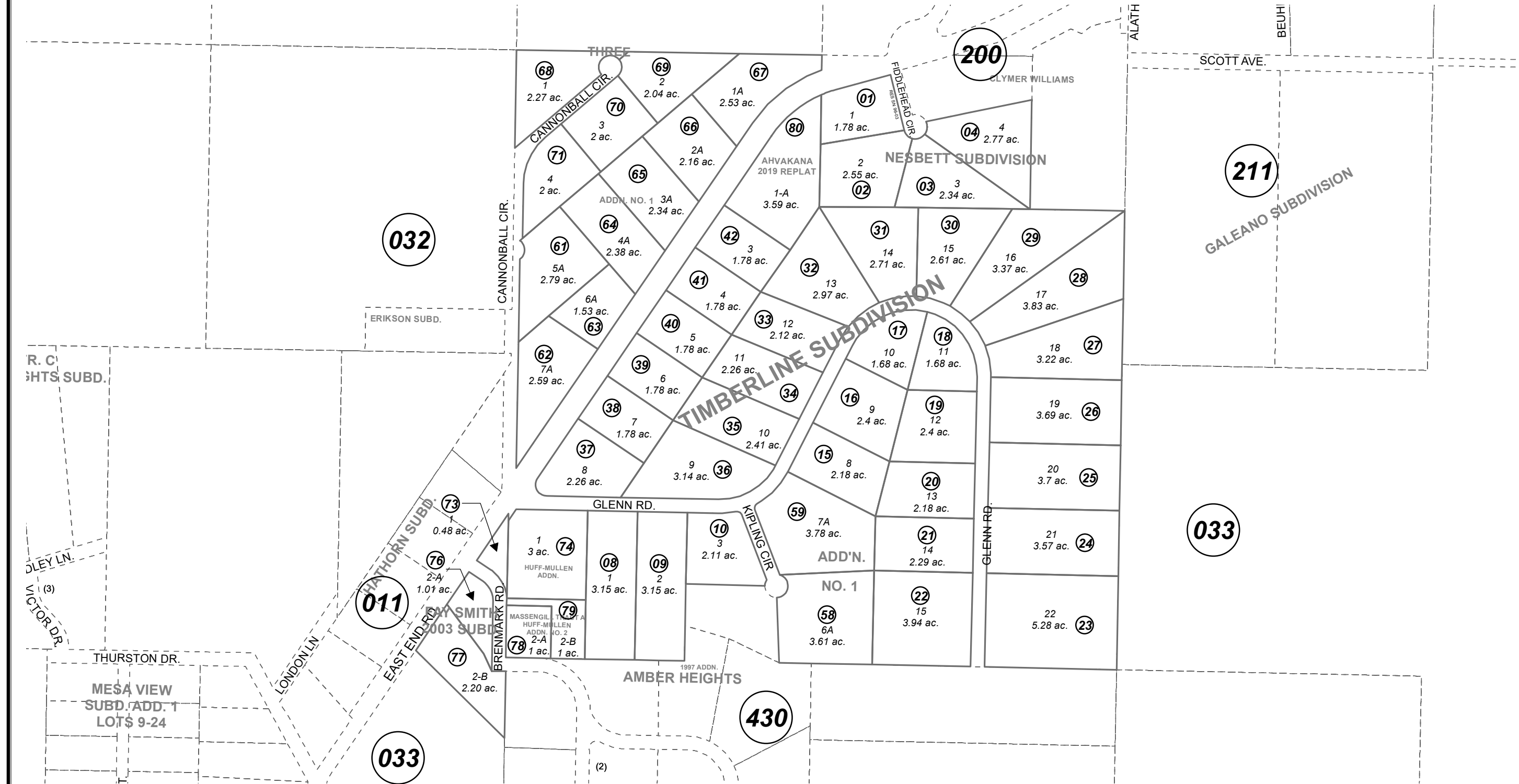


POR. SEC. 32, T05S, R12W, S.M.

172-210



JUNE 25, 2020

For 2021 assessment roll		
Delete	Add	Revise
	To	
43,44	80	

NESBETT SUB HM0770093  
 TIMBERLINE SUB HM0780017  
 TIMBERLINE SUB ADDN NO 1 HM0790024  
 TIMBERLINE THREE SUB HM0830094  
 FAY SMITH 1986 SUB HM0870006  
 MASSENGILL TRACT A HUFF-MULLEN ADDN HM0980025  
 FAY SMITH 2003 SUB HM2004006  
 MASSENGILL TRACT A HUFF-MULLEN ADDN NO. 2 HM2009010  
 TIMBERLINE SUB AHVAKANA 2019 REPLAT HM2020016

Assessor's Map  
Kenai Peninsula Borough

This map is prepared for Kenai Peninsula Borough Assessing Dept. use only and is not intended for conveyance nor is it a survey.  
 Note- Assessor's block Numbers Shown in Ellipses  
 Assessor's Parcel Numbers Shown in Circles

