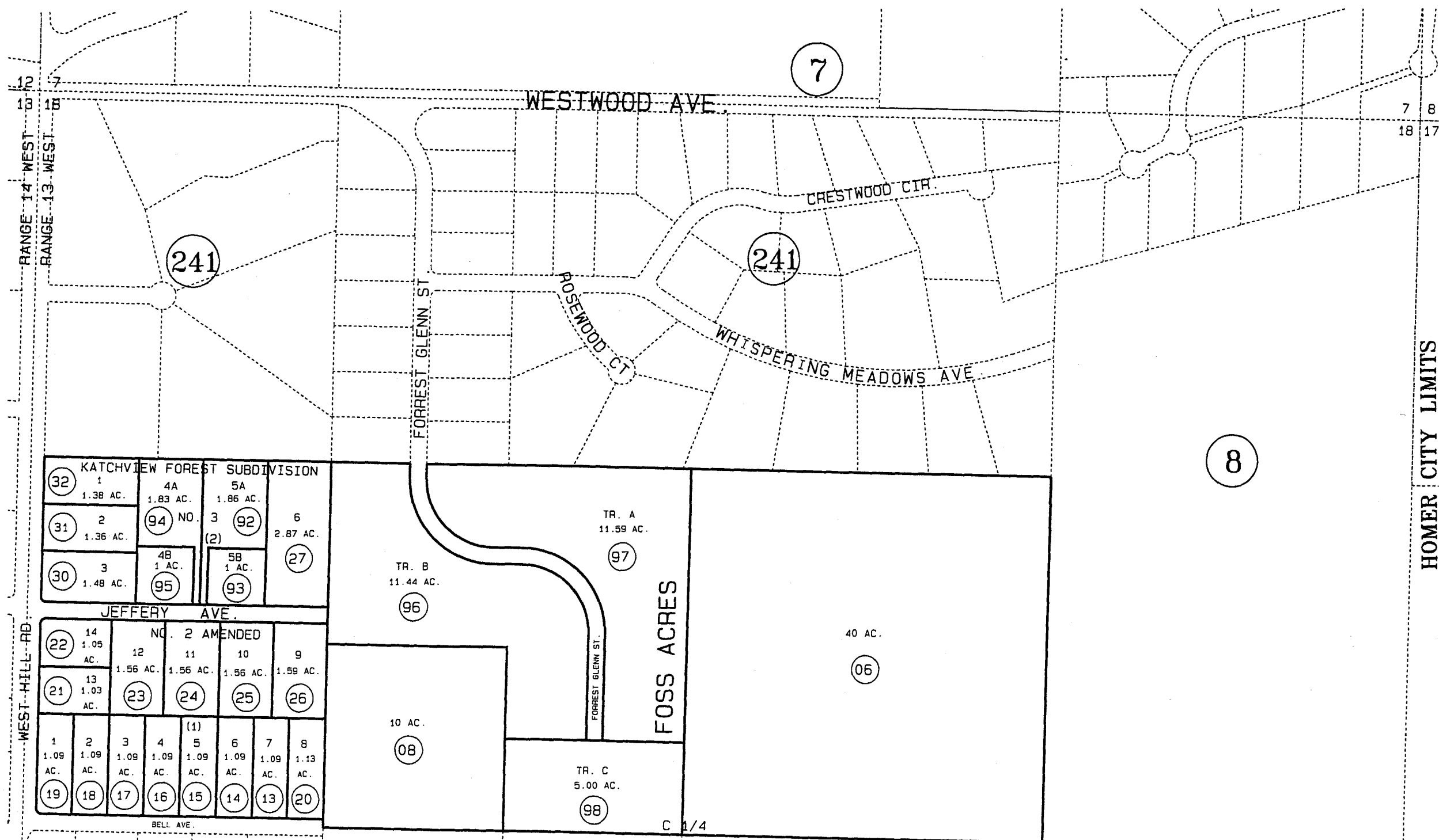


S1/2 NW1/4 & SW1/4 NE1/4 SEC. 18, T6S, R13W, S.M.

173-240



16

7

8

BK 177

KATCHVIEW FOREST SUBDIVISION

32	1 1.38 AC.	4A 1.83 AC.	5A 1.86 AC.	6 2.87 AC.
31	2 1.36 AC.	94 NO.	3 (2)	92
30	3 1.48 AC.	4B 1 AC.	5B 1 AC.	27
		95	93	

JEFFERY AVE.

NO. 2 AMENDED

22	14 1.05 AC.	12 1.56 AC.	11 1.56 AC.	10 1.56 AC.	9 1.59 AC.
21	13 1.03 AC.	23	24	25	26

19	1 1.09 AC.	2 1.09 AC.	3 1.09 AC.	4 1.09 AC.	5 1.09 AC.	6 1.09 AC.	7 1.09 AC.	8 1.13 AC.
			(1)					

DATE: OCT. 2, 1998

FOR 1999 ASSESSMENT ROLL

DELETE	ADD	REVISED
TO		
1	173241+	

Assessor's Map
Kenai Peninsula Borough

BK 175

KATCHVIEW FOREST
KATCHVIEW FOREST PT. 2
FOSS ACRES

HM760063
HM770084
HM940057

HOMER CITY LIMITS

THIS MAP IS PREPARED FOR KENAI PENINSULA BOROUGH ASSESSING DEPT. USE ONLY AND IS NOT INTENDED FOR ANY OTHER USE OR REPRESENTATION

NOTE - Assessor's Block Numbers Shown In Ellipses
Assessor's Parcel Numbers Shown In Circles