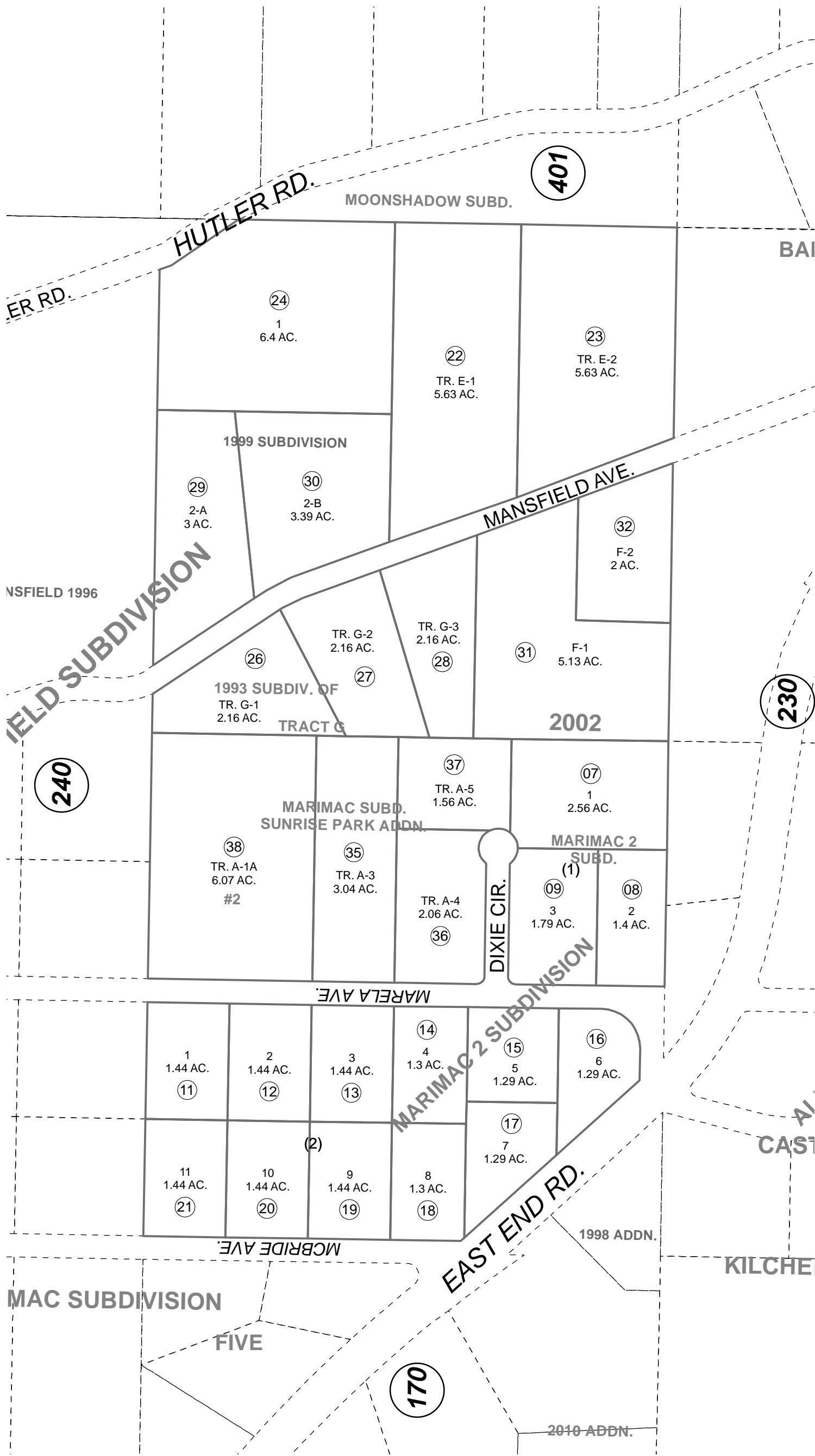


172-250

E 1/2 NW 1/4 SEC. 23, T05S, R12W, S.M.



NSFIELD 1996

240

401

230

MARIMAC 2 SUBDIVISION

For 2015 assessment roll	
Delete	Add
Revise	
To	38
33,34	

JUNE 18, 2014



0 125 250 Feet

This map is prepared for Kenai Peninsula Borough Assessing Dept. use only and is not intended for conveyance nor is it a survey.

Note- Assessor's block Numbers Shown in Ellipses Assessor's Parcel Numbers Shown in Circles

- MANSFIELD SUB HM0780094
- MARIMAC 2 SUB HM0830097
- MANSFIELD 1984 SUB HM0840089
- MANSFIELD SUB 1984 SUB OF TRACT D HM0840103
- MANSFIELD SUB 1993 SUB OF TRACT G HM0930038
- MANSFIELD 1999 SUB HM0990068
- MANSFIELD SUB 2002 HM2002061
- MARIMAC SUB SUNRISE PARK ADDN HM2002093
- MARIMAC SUB SUNRISE PARK ADDN #2 HM2014008

Assessor's Map  
Kenai Peninsula Borough