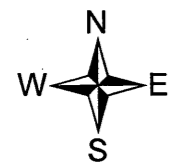
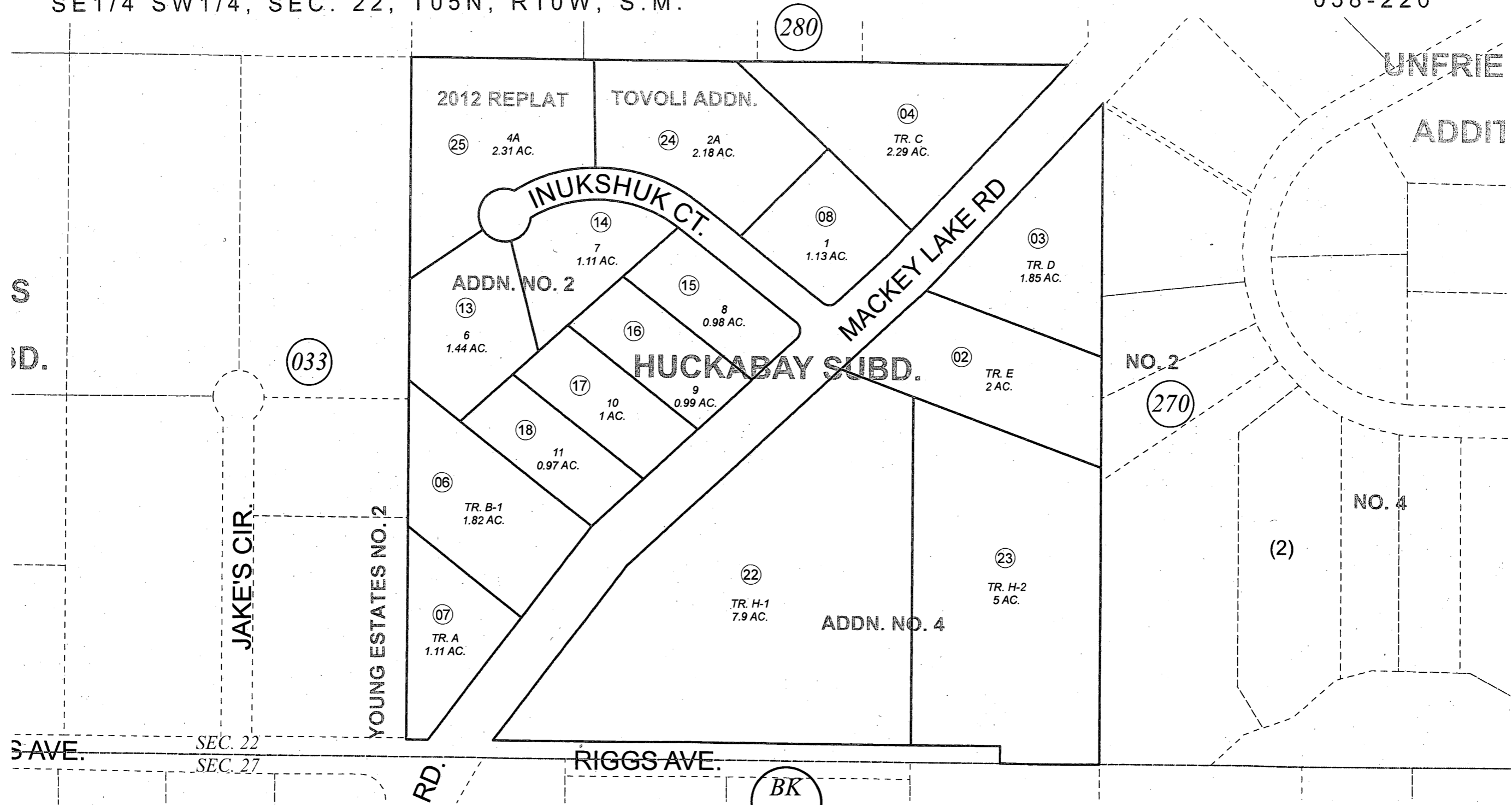


SE1/4 SW1/4, SEC. 22, T05N, R10W, S.M.

058-220



JUNE 25, 2012

For 2013 assessment roll		
Delete	Add	Revise
	To	
11,12	25	

Assessor's Map
Kenai Peninsula Borough

HUCKABAY SUB KN0720038
 HUCKABAY SUB ADDN NO 1 KN0770043
 HUCKABAY SUB ADDN NO 1 RESUB OF TRACT B KN0770098
 HUCKABAY SUB ADDN NO 2 KN0830154
 HUCKABAY SUB ADDN NO 3 KN0880063
 HUCKABAY SUB ADDN NO 4 KN0930090
 HUCKABAY SUB TOVOLI ADDN KN2010073
 HUCKABAY SUB 2012 REPLAT KN2012023

This map is prepared for Kenai Peninsula Borough Assessing Dept. use only and is not intended for conveyance nor is it a survey.
 Note- Assessor's block Numbers Shown in Ellipses
 Assessor's Parcel Numbers Shown in Circles