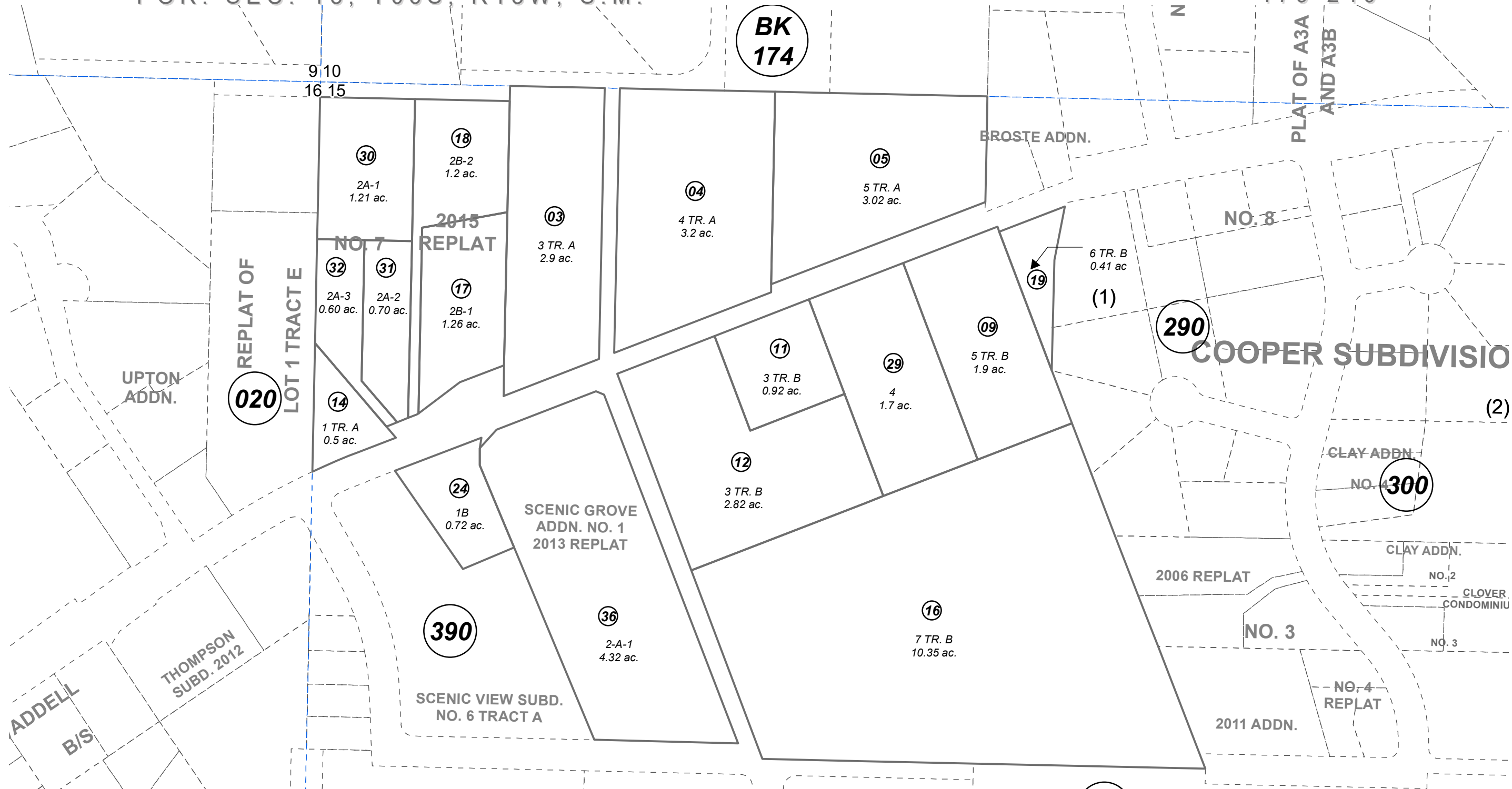


POR. SEC. 15, T06S, R13W, S.M.

**BK
174**

179-240



020
REPLAT OF
LOT 1 TRACT E

290

300

390

010

MAY 28, 2020

For 2021 assessment roll		
Delete	Add	Revise
		11
(ACREAGE CHANGE)		

- SCENIC VIEW SUB HM0000058
- SCENIC VIEW SUB HM0000587
- SCENIC VIEW SUB HM0631151
- SCENIC VIEW REPLAT OF LOT 1 TR B HM0780103
- SCENIC VIEW SUB MARY ALLEN 1981 REPLAT HM0810031
- SCENIC VIEW SUB NO 7 HM2004087
- SCENIC VIEW SUB SCENIC GROVE ADDN NO 1 HM2006018
- SCENIC VIEW SUB SCENIC GROVE ADDN NO 1 2013 REPLAT HM2013043
- SCENIC VIEW SUB 2015 REPLAT HM2015017

Assessor's Map
Kenai Peninsula Borough

This map is prepared for Kenai Peninsula Borough Assessing Dept. use only and is not intended for conveyance nor is it a survey.

Note- Assessor's block Numbers Shown in Ellipses
Assessor's Parcel Numbers Shown in Circles