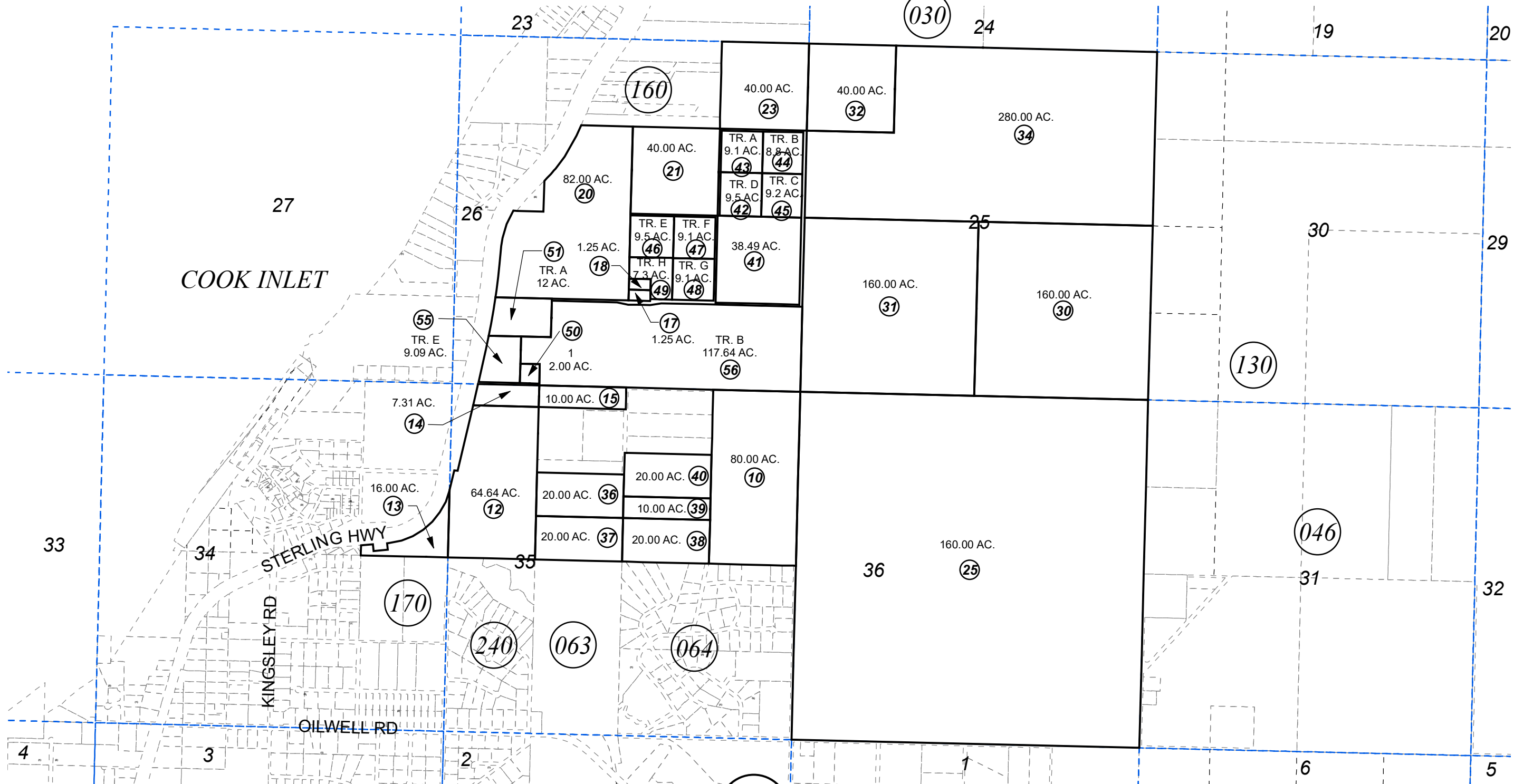


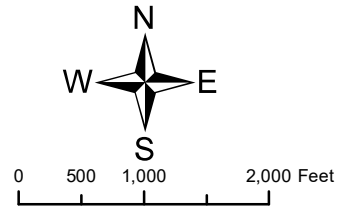
SEC. 4 - 9, T04N, R11W, S.M.

157-062



JUNE 5, 2019

For 2020 assessment roll		
Delete	Add	Revise
To		
52-54	55,56	



Assessor's Map
Kenai Peninsula Borough

HM0870055 KIRKLAND SUB
HM2002007 HOSTETTER SUB NO 2 AMENDED
HM2019002 HOSTETTER SUB 2018 REPLAT

This map is prepared for Kenai Peninsula Borough Assessing Dept. use only and is not intended for conveyance nor is it a survey.
Note- Assessor's block Numbers Shown in Ellipses
Assessor's Parcel Numbers Shown in Circles