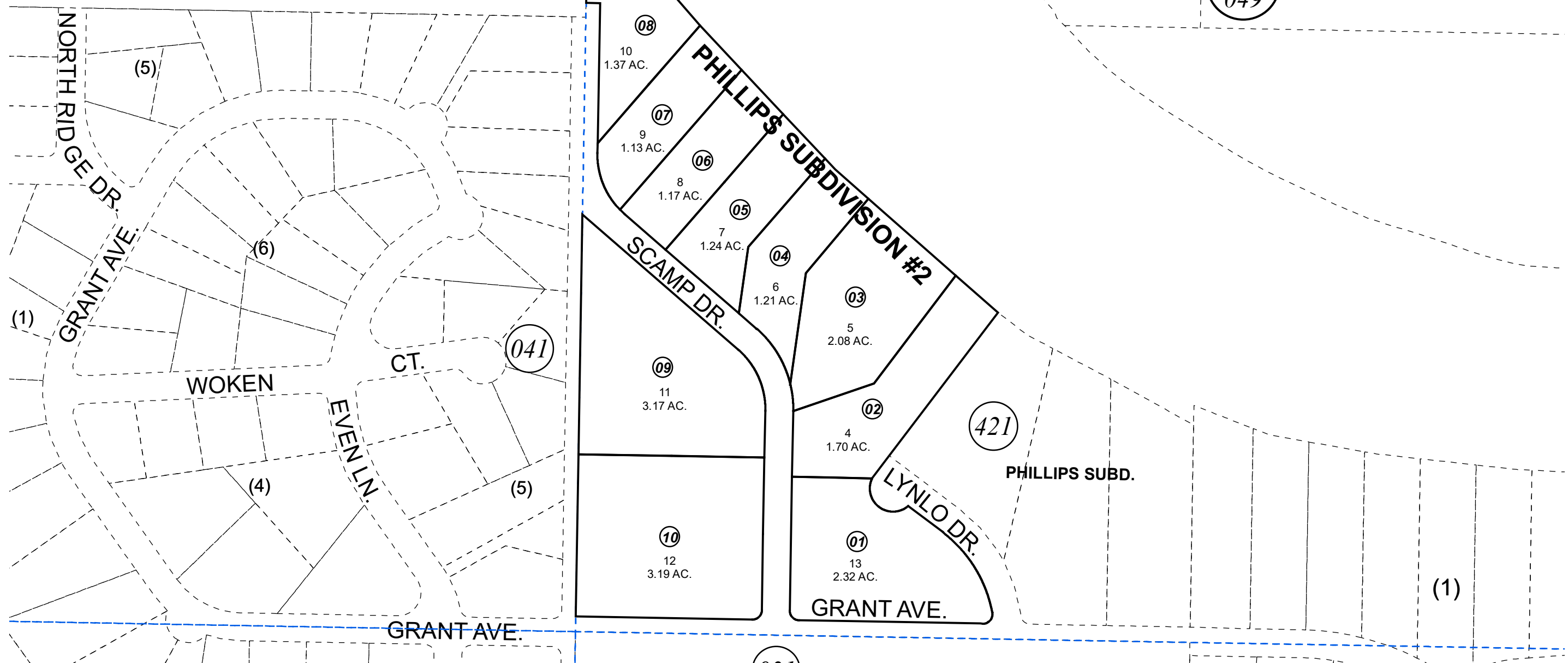


031

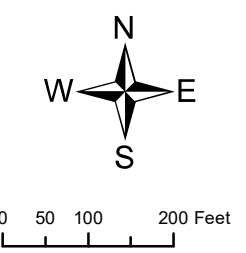
BK  
049

WILLOW BROOK NORTH ADDN.



DECEMBER 14, 2018

For 2019 assessment roll		
Delete	Add	Revise
To		
NEW PAGE		



Assessor's Map  
Kenai Peninsula Borough

KN2018074 PHILLIPS SUB #2

This map is prepared for Kenai Peninsula Borough Assessing Dept. use only and is not intended for conveyance nor is it a survey.

Note- Assessor's block Numbers Shown in Elipses  
Assessor's Parcel Numbers Shown in Circles