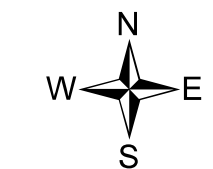
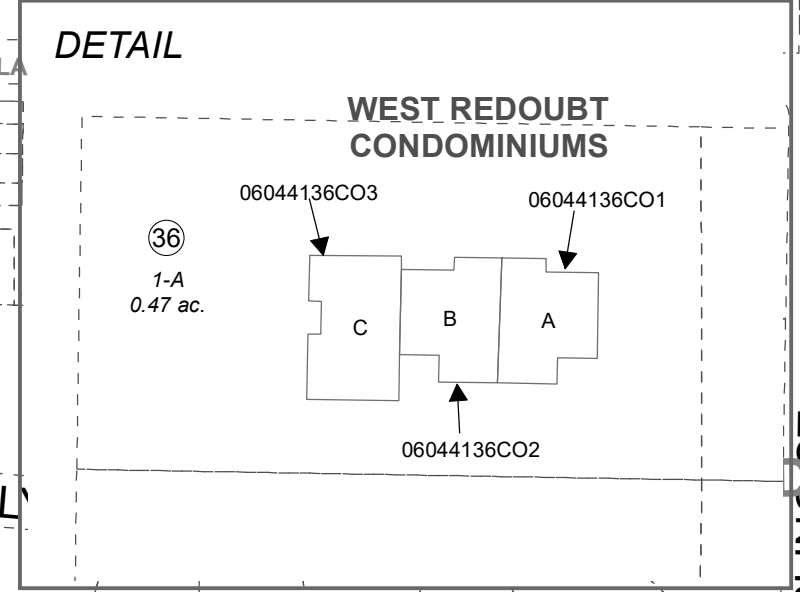
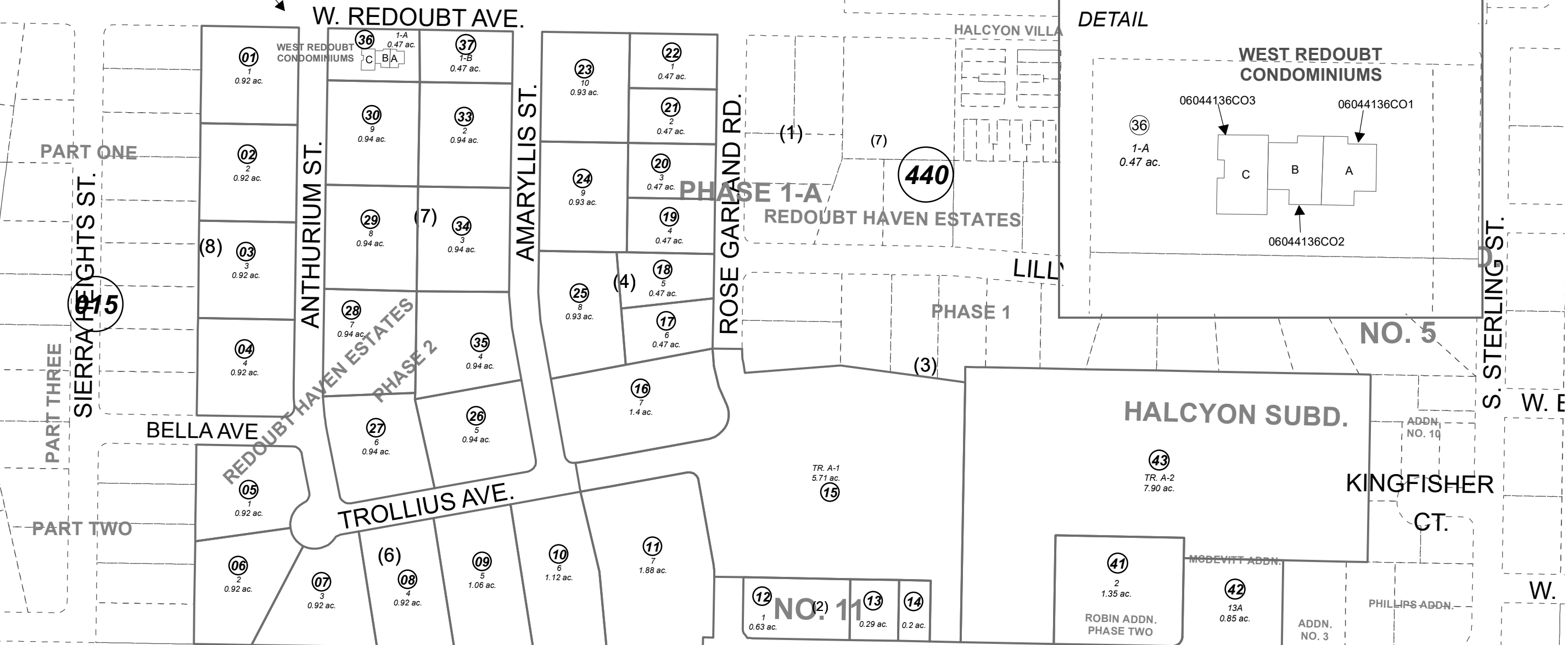


# REDOUBT HAVEN ESTATES

**BK**  
**059**

SEE  
DETAIL



0 100 200 Feet

DECEMBER 11, 2020

For 2021 assessment roll		
Delete	Add	Revise
To		
38,40	42,43	

Assessor's Map  
Kenai Peninsula Borough

- HALCYON SUB ADDN NO 5 □ KN0770082
- HALCYON SUB ADDN NO 3 □ KN0780025
- HALCYON SUB ADDN NO 7 □ KN0790155
- HALCYON SUB ADDN NO 9 □ KN0840047
- HALCYON SUB ADDN NO 10 □ KN0840244
- HALCYON SUB NO 11 □ KN0920041 ADDN.
- REDOUBT HAVEN ESTATES SUB PHASE 1 □ KN0940044
- REDOUBT HAVEN ESTATES SUB PHASE 1-A □ KN0950009
- REDOUBT HAVEN ESTATES SUB PHASE 2 □ KN0950030
- REDOUBT HAVEN ESTATES SUBD □ KN0950075
- REDOUBT HAVEN ESTATES SUB PHASE 3 □ KN2001088
- HALCYON SUB PHILLIPS ADDN KN2005066
- REDOUBT HAVEN ESTATES SUB BURNETT REPLAT KN2005038
- HALCYON SUB ROBIN ADDN PHASE ONE KN2007137
- HALCYON SUB ROBIN ADDN PHASE TWO KN2008134
- WEST REDOUBT CONDOMINIUMS KN2011015
- HALCYON SUB MCDEVITT ADDN KN2020067

**150**

Note- Assessor's block Numbers Shown in Ellipses  
Assessor's Parcel Numbers Shown in Circles

This map is prepared for Kenai Peninsula Borough Assessing Dept. use only and is not intended for conveyance nor is it a survey.