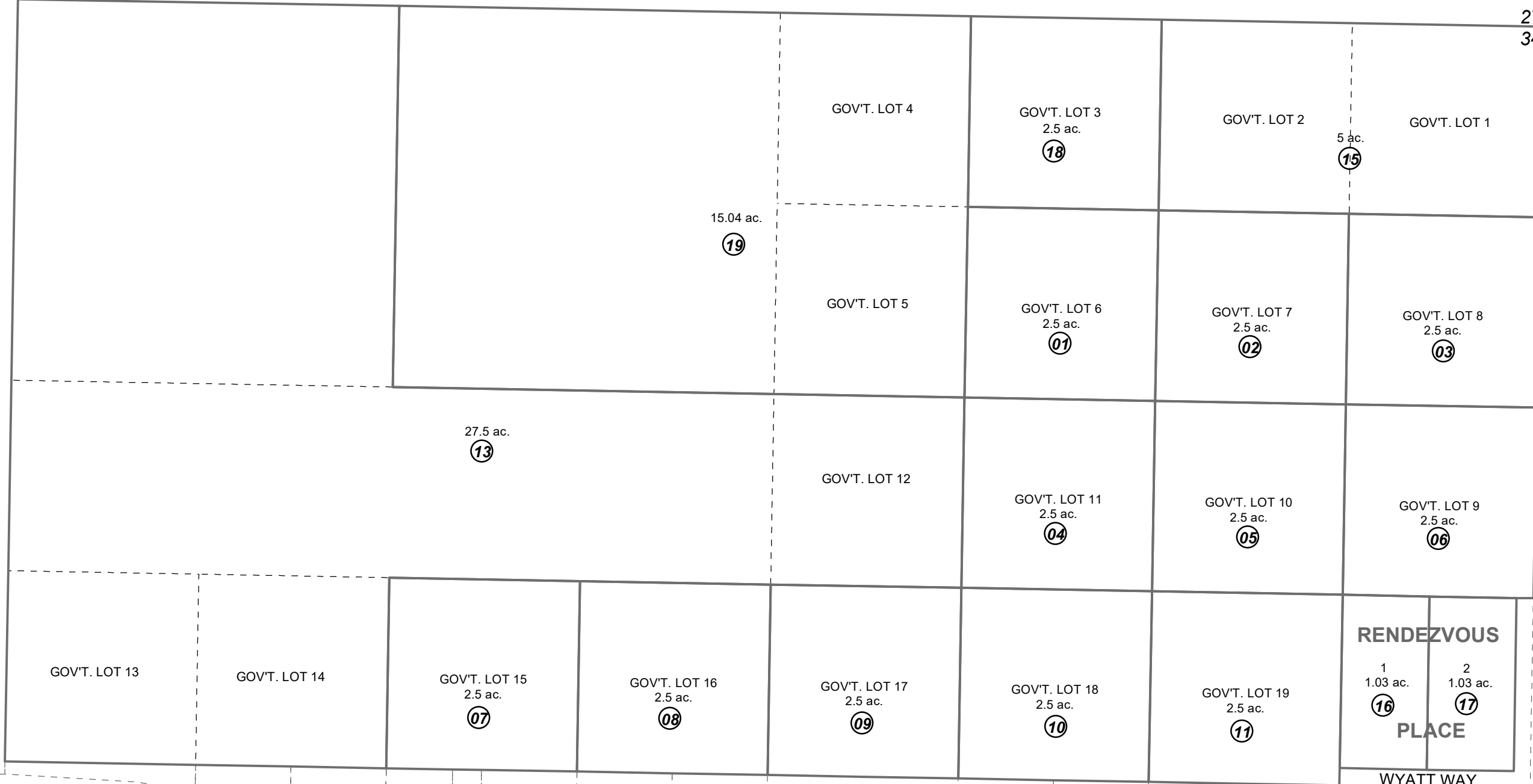


POR. SEC. 34, T06N, R11W, S.M.

**BK
41**

045-160

27 26
34 35



1

**BK
41**

SWIRES RD.

RODLAND

18

WYATT WAY

JANUARY 31, 2022



0 50 100 200 Feet

For 2022 assessment roll		
Delete	Add	Revise
		19
(REVISED ACREAGE)		

Assessor's Map
Kenai Peninsula Borough

RENDEZVOUS PLACE KN2001015
RECORD OF SURVEY KN2021037

This map is prepared for Kenai Peninsula Borough Assessing Dept. use only and is not intended for conveyance nor is it a survey.

Note- Assessor's block Numbers Shown in Elipses
Assessor's Parcel Numbers Shown in Circles