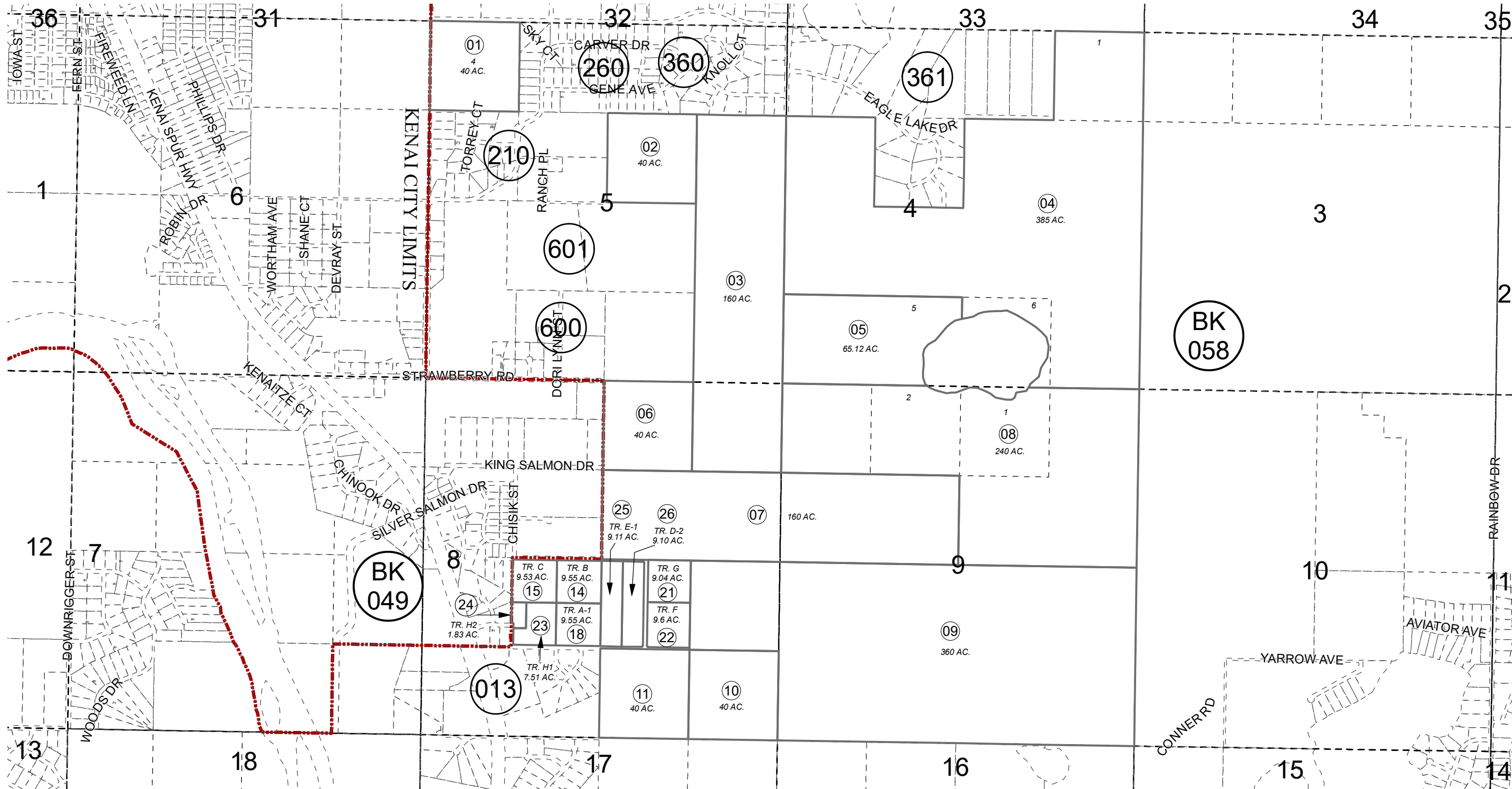


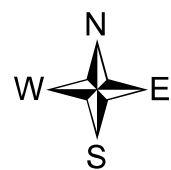
POR. SEC. 4, 5, 8 & 9, T05N, R10W, S.M.

057-010



JUNE 30, 2021

For 2022 assessment roll		
Delete	Add	Revise
To		
19,20	25,26	



0 500 1,000 2,000 Feet

Assessor's Map  
Kenai Peninsula Borough

REX W EAGLE HOMESTEAD SUB TRACT A KN0760162  
 REX W EAGLE HOMESTEAD SUB TRACT B KN0770153  
 REX W EAGLE HOMESTEAD SUB TRACT C KN0780230  
 REX W EAGLE HOMESTEAD SUB TRACT D KN0790107  
 REX W EAGLE HOMESTEAD SUB ADDN NO 1 KN2007101  
 REX W EAGLE HOMESTEAD SUB ADDN NO 2 KN2011053  
 REX W EAGLE HOMESTEAD 2021 REPLAT KN2021026

Note- Assessor's block Numbers Shown in Elipses  
Assessor's Parcel Numbers Shown in Circles

This map is prepared for Kenai Peninsula Borough Assessing Dept. use only and is not intended for conveyance nor is it a survey.