

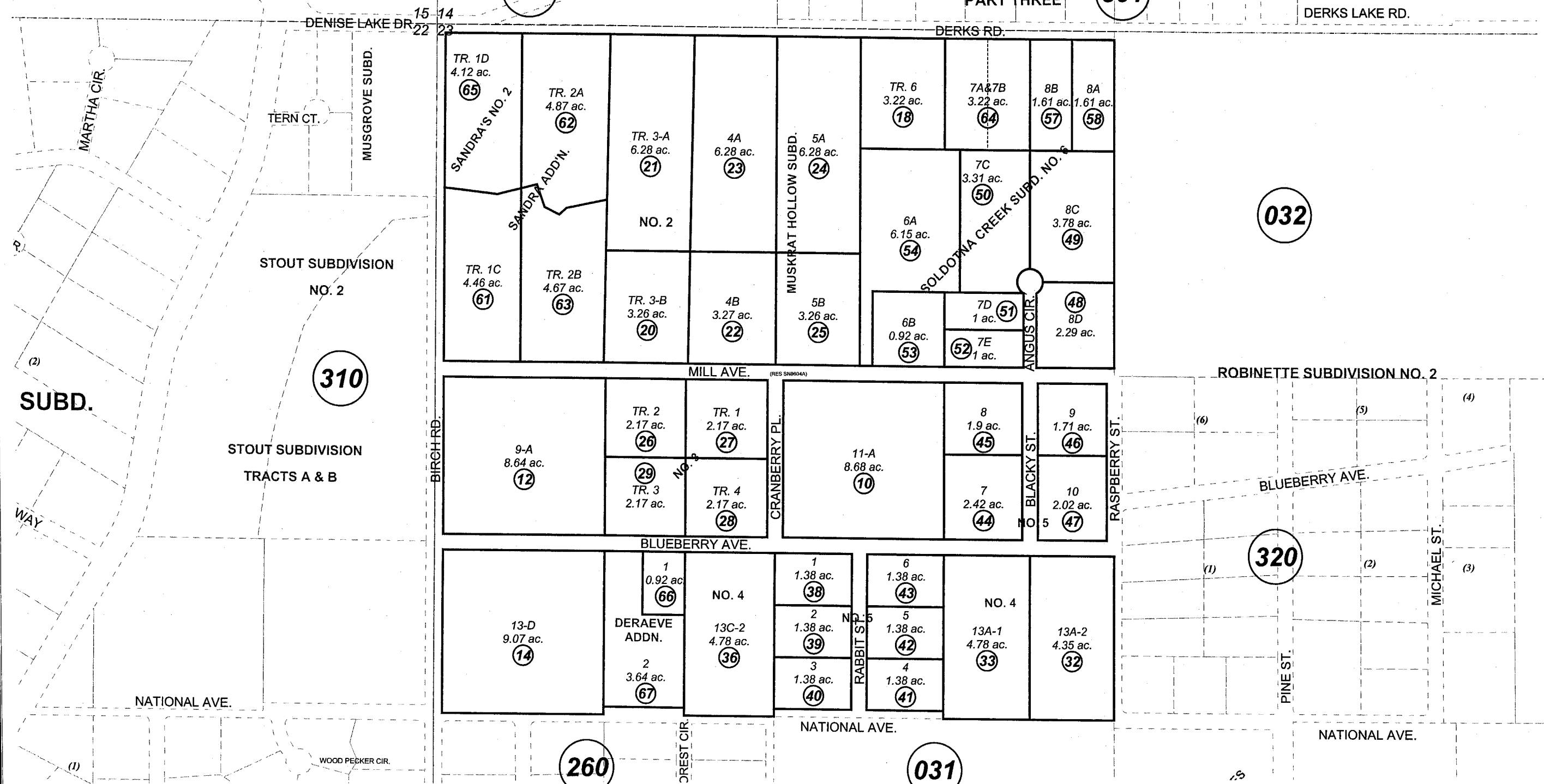
050

SUBD.

PART THREE

301

DERKS LAKE RD.



MAY 11, 2004

For 2005 assessment roll		
Delete	Add	Revise
To		
37	66,67	

Assessor's Map  
Kenai Peninsula Borough

- SOLDOTNA CREEK SUB KN0730063
- SOLDOTNA CREEK SUB NO 1 KN0750093
- SOLDOTNA CREEK SUB NO 2 KN0790008
- MUSKRAT HOLLOW SUB KN0790034
- SOLDOTNA CREEK SUB NO 3 KN0790138
- SOLDOTNA CREEK SUB NO 4 KN0800068
- SOLDOTNA CREEK SUB NO 5 KN0840283
- SOLDOTNA CREEK SUB NO 6 AMENDED KN0860157
- SOLDOTNA CREEK SANDRA ADDN KN0910007
- SOLDOTNA CREEK SANDRA'S NO 2 KN2003029
- SOLDOTNA CREEK DERA EVE ADDN KN2004002

This map is prepared for Kenai Peninsula Borough Assessing Dept. use only and is not intended for conveyance nor is it a survey.

Note- Assessor's block Numbers Shown in Elipses  
Assessor's Parcel Numbers Shown in Circles