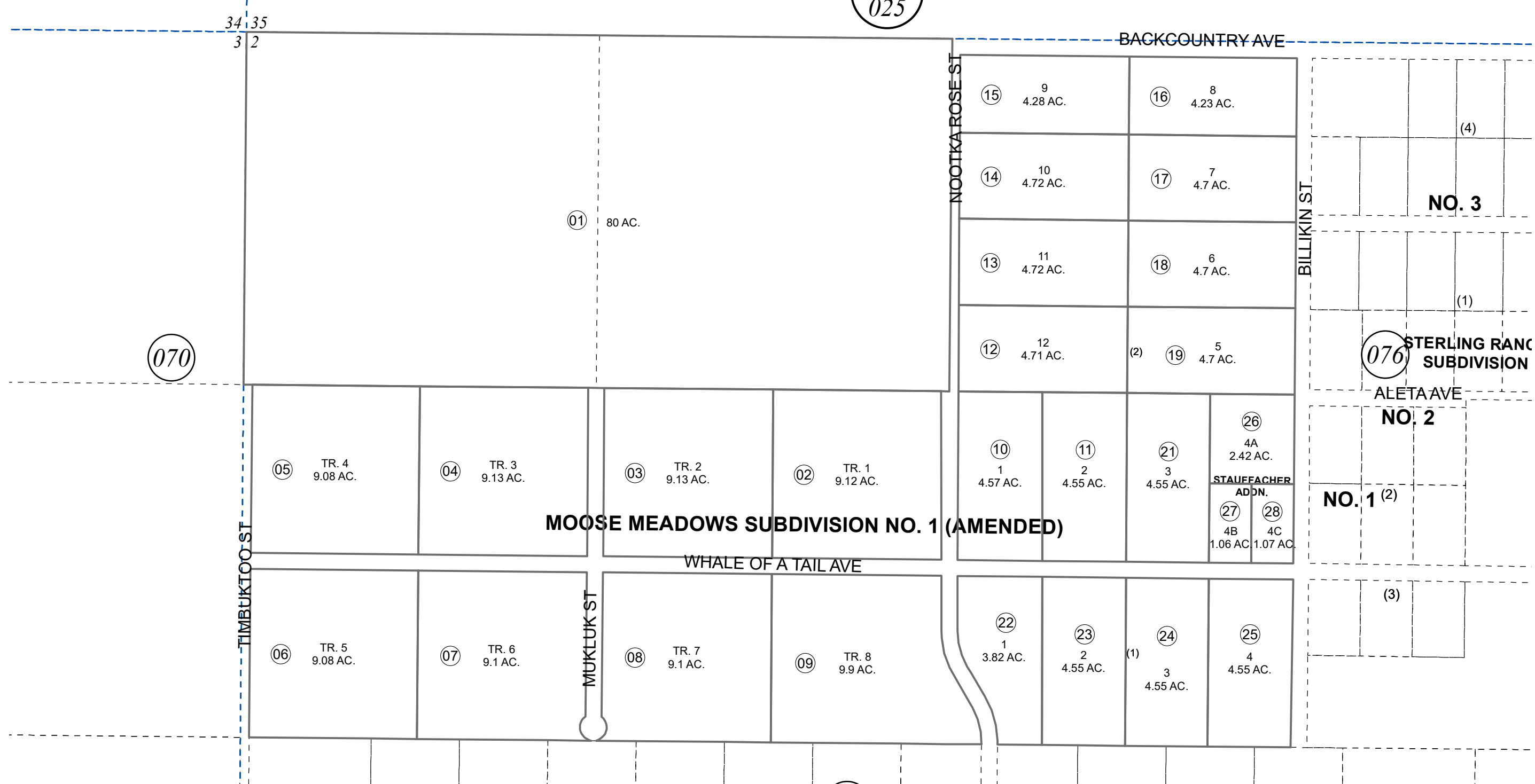


NW1/4 AND W1/2 NE1/4, T05N, R08W, S.M.

BK
025

065-510



MARCH 10, 2022

For 2022 assessment roll		
Delete	Add	Revise
To		
UPDATED SUBDIVISION LABEL		



0 100 200 400 Feet

Assessor's Map
Kenai Peninsula Borough

MOOSE MEADOWS SUB NO. 1 KN0780212
 MOOSE MEADOWS SUB NO. 1 AMENDED KN0830109
 MOOSE MEADOWS SUB STAUFFACHER ADDN KN2013035

This map is prepared for Kenai Peninsula Borough Assessing Dept. use only and is not intended for conveyance nor is it a survey.
 Note- Assessor's block Numbers Shown in Ellipses
 Assessor's Parcel Numbers Shown in Circles