

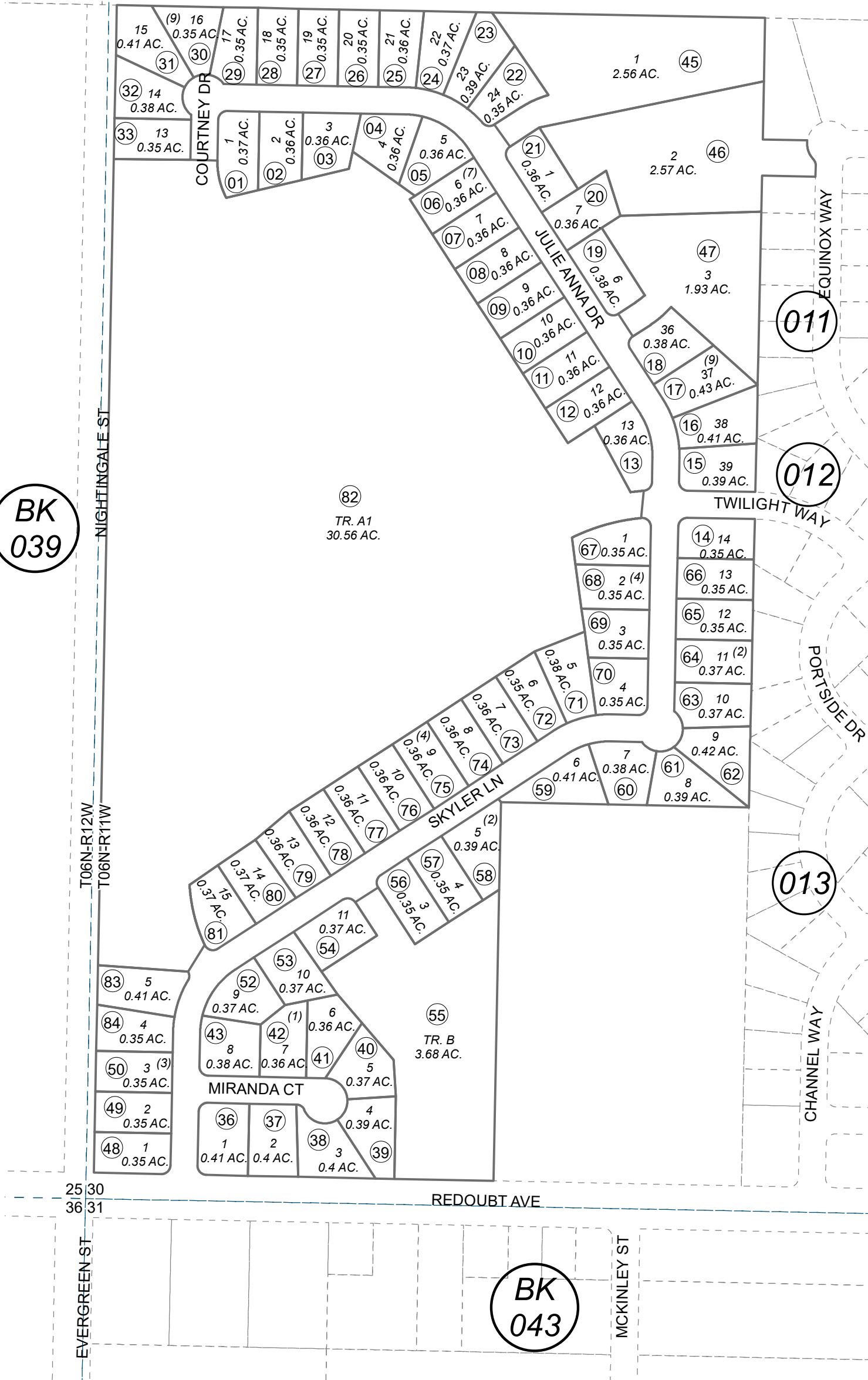
041-014

POR. SW1/4 SEC. 30, T06N, R11W, S.M.

BK 017

BK 039

BK 043



This map is prepared for Kenai Peninsula Borough Assessing Dept. use only and is not intended for conveyance nor is it a survey.

Note- Assessor's block Numbers Shown in Ellipses  
Assessor's Parcel Numbers Shown in Circles

- WINDHAVEN ESTATES PHASE 1 KN0980026
- WINDHAVEN ESTATES PHASE 2 KN0990060
- WINDHAVEN ESTATES TAPLEY ADDN KN2012033
- WINDHAVEN ESTATES PHASE 3 KN2019005
- WINDHAVEN ESTATES PHASE 4 KN2023017

Assessor's Map  
Kenai Peninsula Borough



0 100 200 Feet

JULY 14, 2023

For 2024 assessment roll	
Delete	Add
	Revise
To	
51	52-84