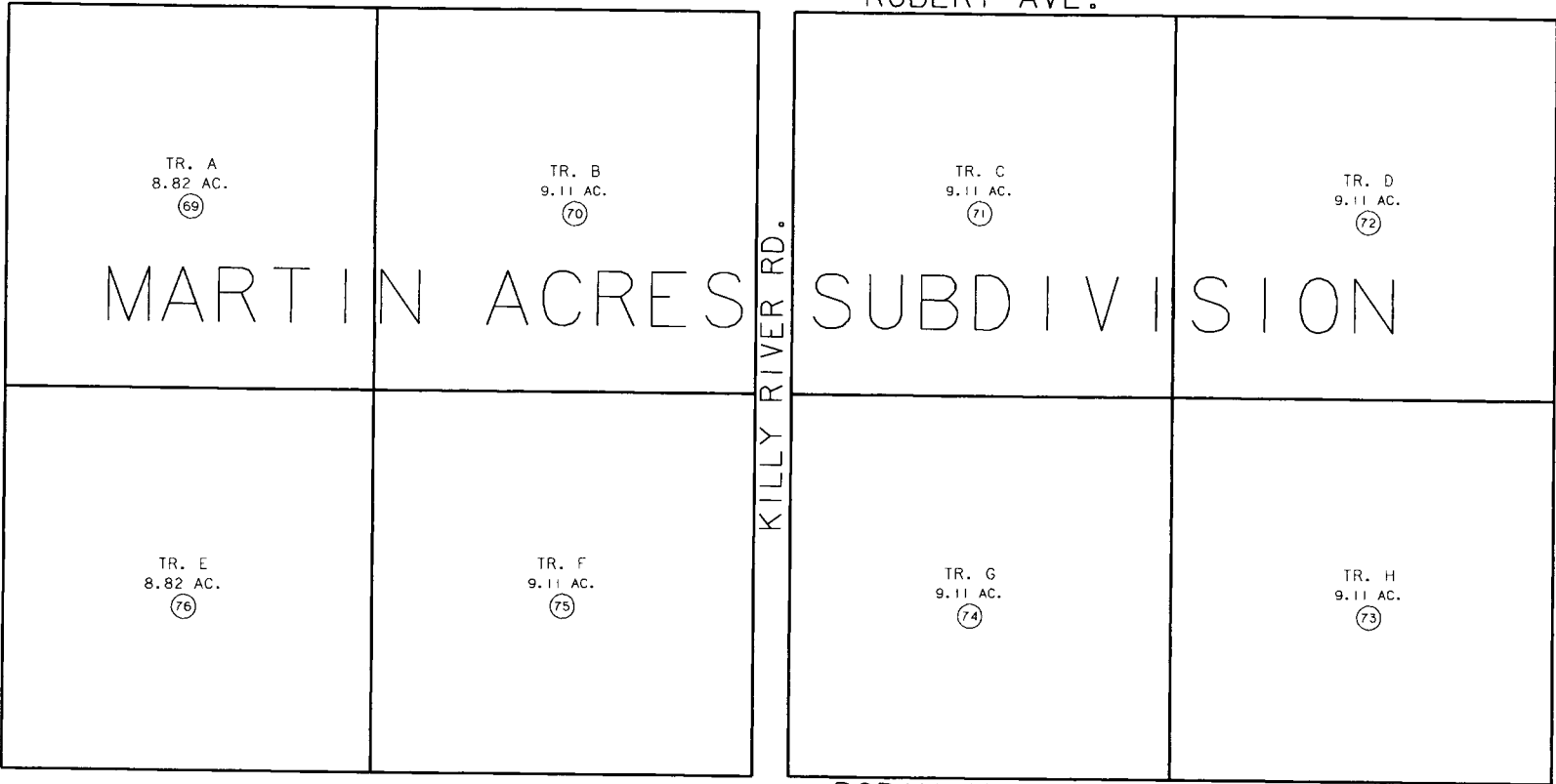


115

ROBERT AVE.



TR. A  
8.82 AC.

69

TR. B  
9.11 AC.

70

TR. C  
9.11 AC.

71

TR. D  
9.11 AC.

72

MARTIN ACRES SUBDIVISION

TR. E  
8.82 AC.

76

TR. F  
9.11 AC.

75

TR. G  
9.11 AC.

74

TR. H  
9.11 AC.

73

ROBIN AVE.

43

LAKE ST.

KILLY RIVER RD.

GLACIER BLUE AVE.

321

32

DATE: AUG. 24, 1993

FOR 1994 ASSESSMENT ROLL

DELETE ADD REVISED

TO

REVISED

PAGE

NOTE - Assessor's Block Numbers Shown In Ellipses  
Assessor's Parcel Numbers Shown In Circles

Assessor's Map  
Kenai Peninsula Borough

THIS MAP IS PREPARED  
FOR KENAI PENINSULA  
BOROUGH ASSESSING DEPT.  
USE ONLY AND IS NOT  
INTENDED FOR ANY  
OTHER USE OR REPRESENTATION

