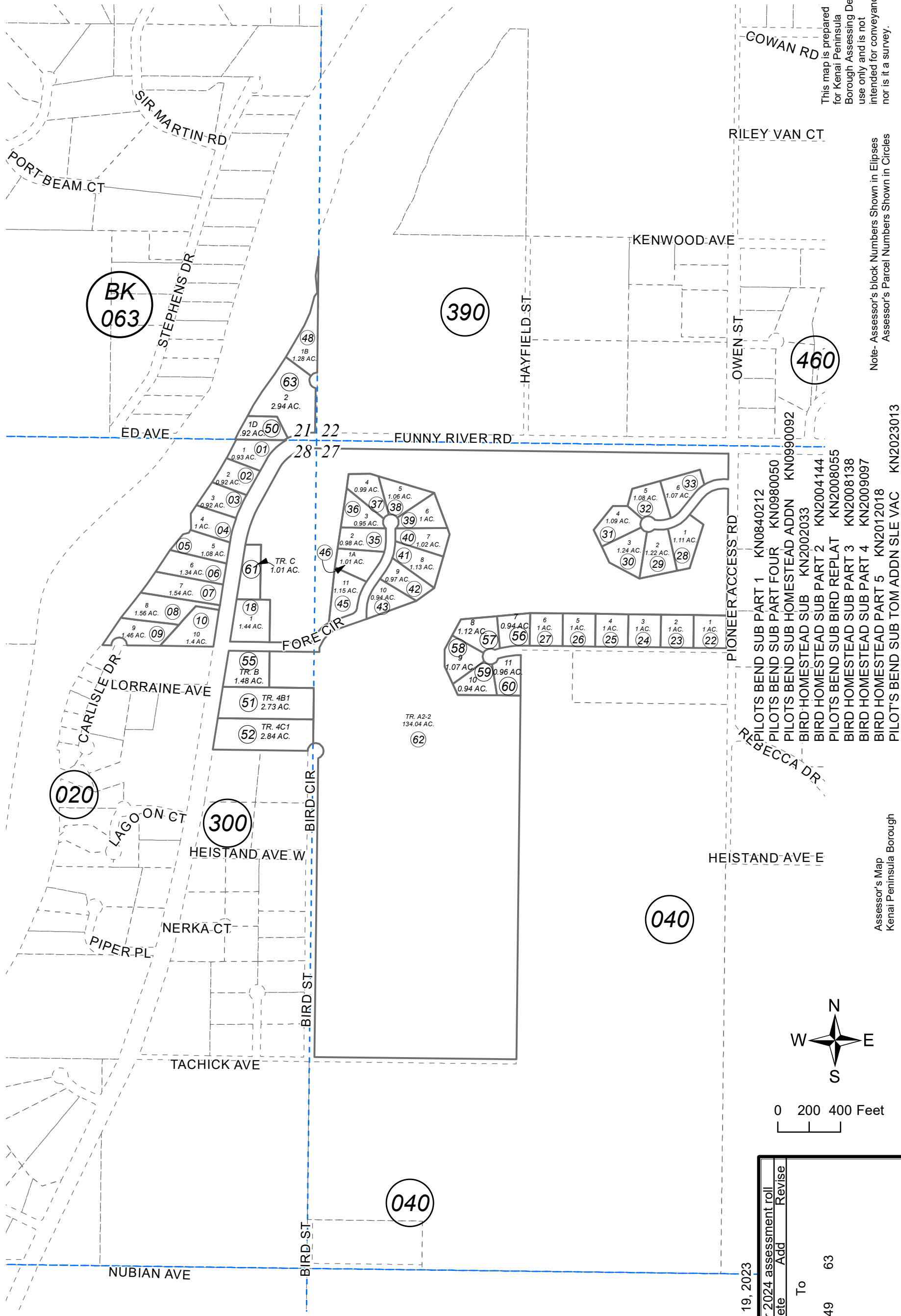


066-011

POR. SEC. 21, 27, 28, T05N, R09W, S.M.



This map is prepared for Kenai Peninsula Borough Assessing Dept. use only and is not intended for conveyance nor is it a survey.

Note- Assessor's block Numbers Shown in Ellipses Assessor's Parcel Numbers Shown in Circles

Assessor's Map Kenai Peninsula Borough

For 2024 assessment roll		
Delete	Add	Revise
	To	
49	63	

JUNE 19, 2023

- PILOTS BEND SUB PART 1 KN0840212
- PILOTS BEND SUB PART FOUR KN0980050
- PILOTS BEND SUB HOMESTEAD ADDN KN0990092
- BIRD HOMESTEAD SUB KN2002033
- BIRD HOMESTEAD SUB PART 2 KN2004144
- PILOTS BEND SUB BIRD REPLAT KN2008055
- BIRD HOMESTEAD SUB PART 3 KN2008138
- BIRD HOMESTEAD SUB PART 4 KN2009097
- PILOT'S BEND SUB TOM ADDN SLE VAC KN2023013