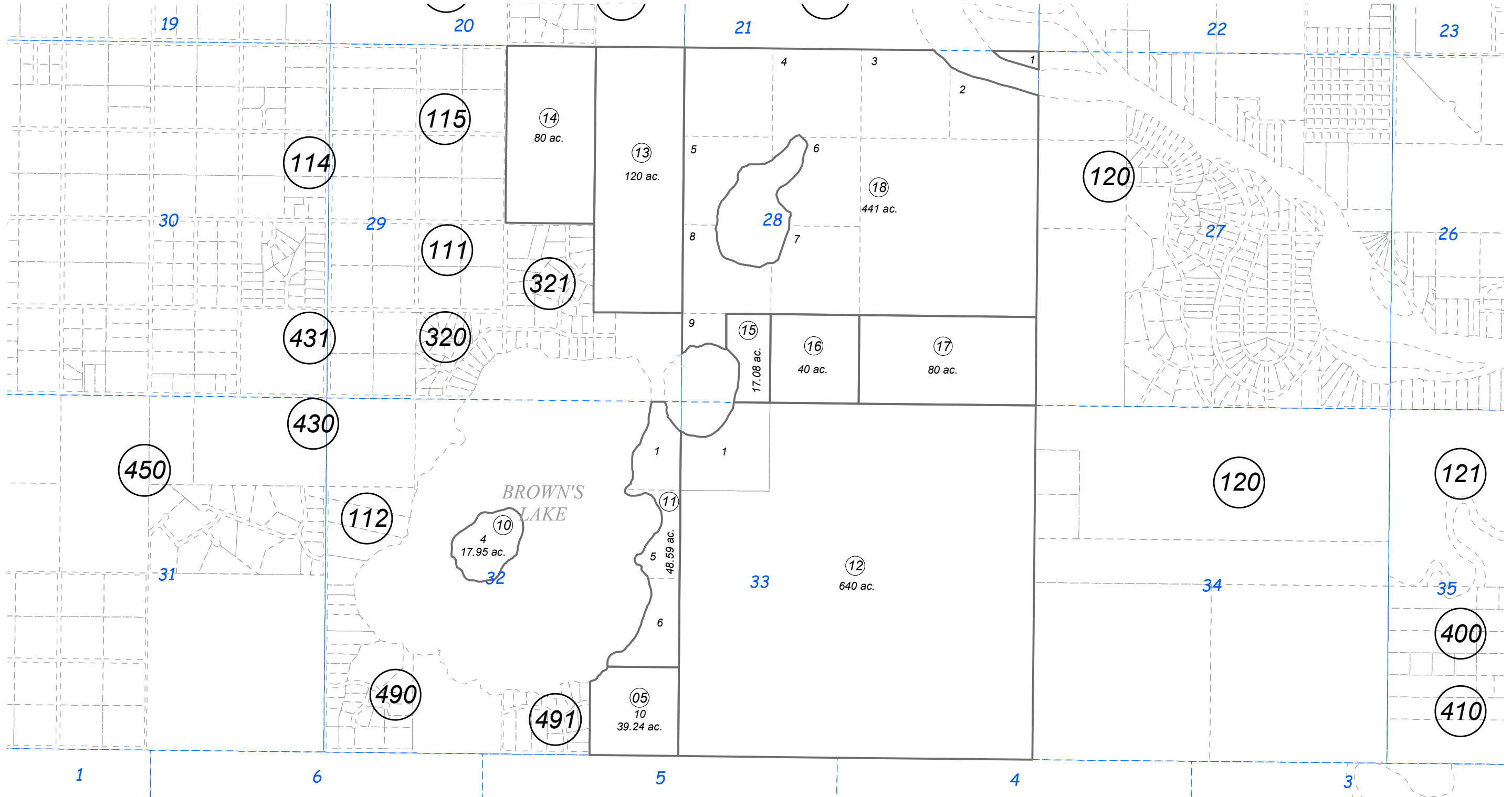


SEC. 28, 29, 32, 33, T05N, R08W, S.M.

066-113



FEBRUARY 2, 2023

For 2023 assessment roll

Delete	Add	Revise
To		
07	15-18	



0 500 1,000 Feet

Assessor's Map
Kenai Peninsula Borough

This map is prepared for Kenai Peninsula Borough Assessing Dept. use only and is not intended for conveyance nor is it a survey.

Note- Assessor's block Numbers Shown in Ellipses
Assessor's Parcel Numbers Shown in Circles