

N 1/2 NW 1/4 SEC. 20, T05N, R08W, S.M.

066-161

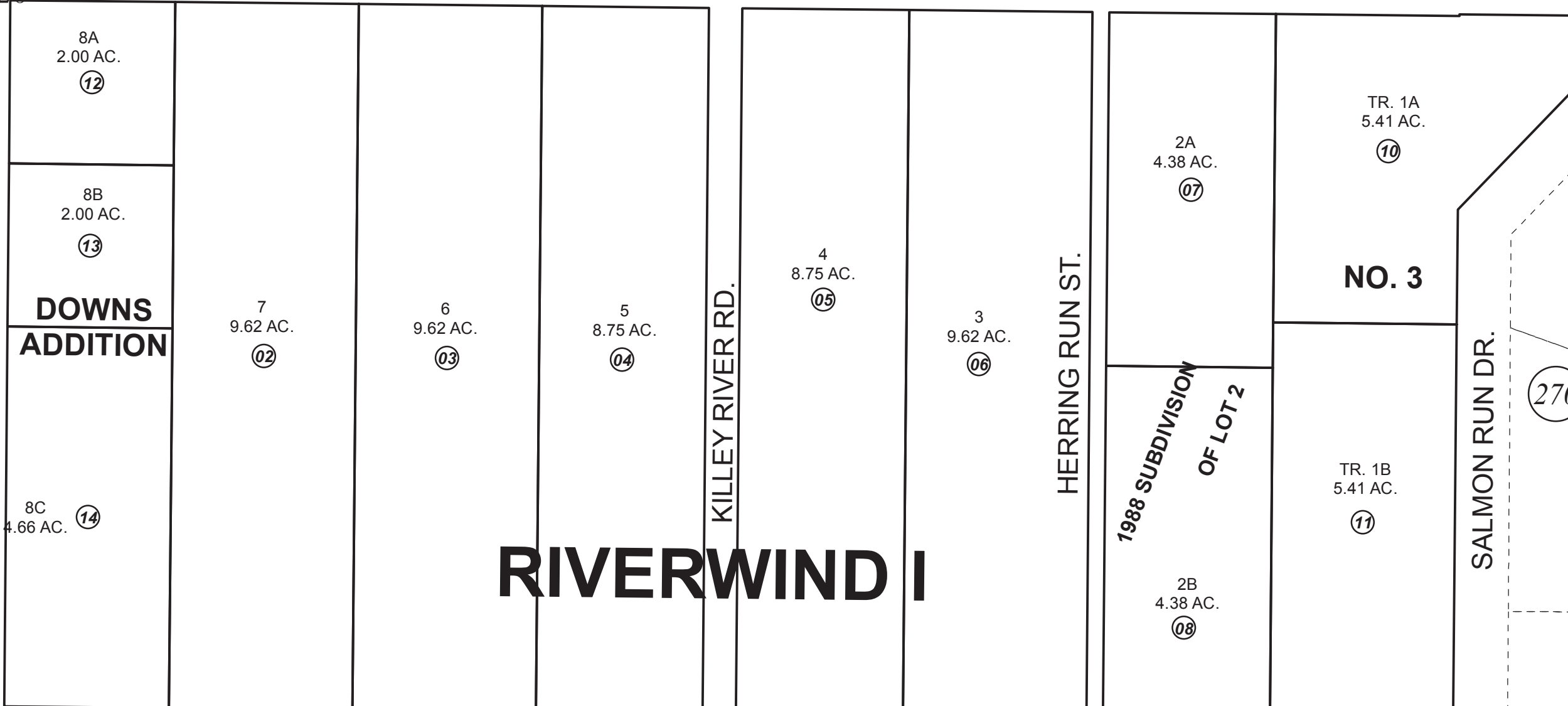
160

170

18 17

19 20

FUNNY RIVER RD.



8A
2.00 AC.
12

8B
2.00 AC.
13

**DOWNS
ADDITION**

8C
4.66 AC.
14

7
9.62 AC.
02

6
9.62 AC.
03

5
8.75 AC.
04

4
8.75 AC.
05

3
9.62 AC.
06

2A
4.38 AC.
07

1988 SUBDIVISION
OF LOT 2
2B
4.38 AC.
08

TR. 1A
5.41 AC.
10

NO. 3
TR. 1B
5.41 AC.
11

SALMON RUN DR.

270

(2)

CAPRICE ESTATES

360

100

AUGUST 31, 2016

For 2017 assessment roll		
Delete	Add	Revise
To		
01	12-14	



0 50 100 200 Feet

Assessor's Map
Kenai Peninsula Borough

RIVERWIND I SUB KN0720048
RIVERWIND I SUB 1988 SUB OF LOT 2 KN0880084
RIVERWIND NO 3 AMENDED KN0970060
RIVERWIND 1 SUB DOWNS ADDN KN2016043

This map is prepared for Kenai Peninsula Borough Assessing Dept. use only and is not intended for conveyance nor is it a survey.
Note- Assessor's block Numbers Shown in Ellipses
Assessor's Parcel Numbers Shown in Circles