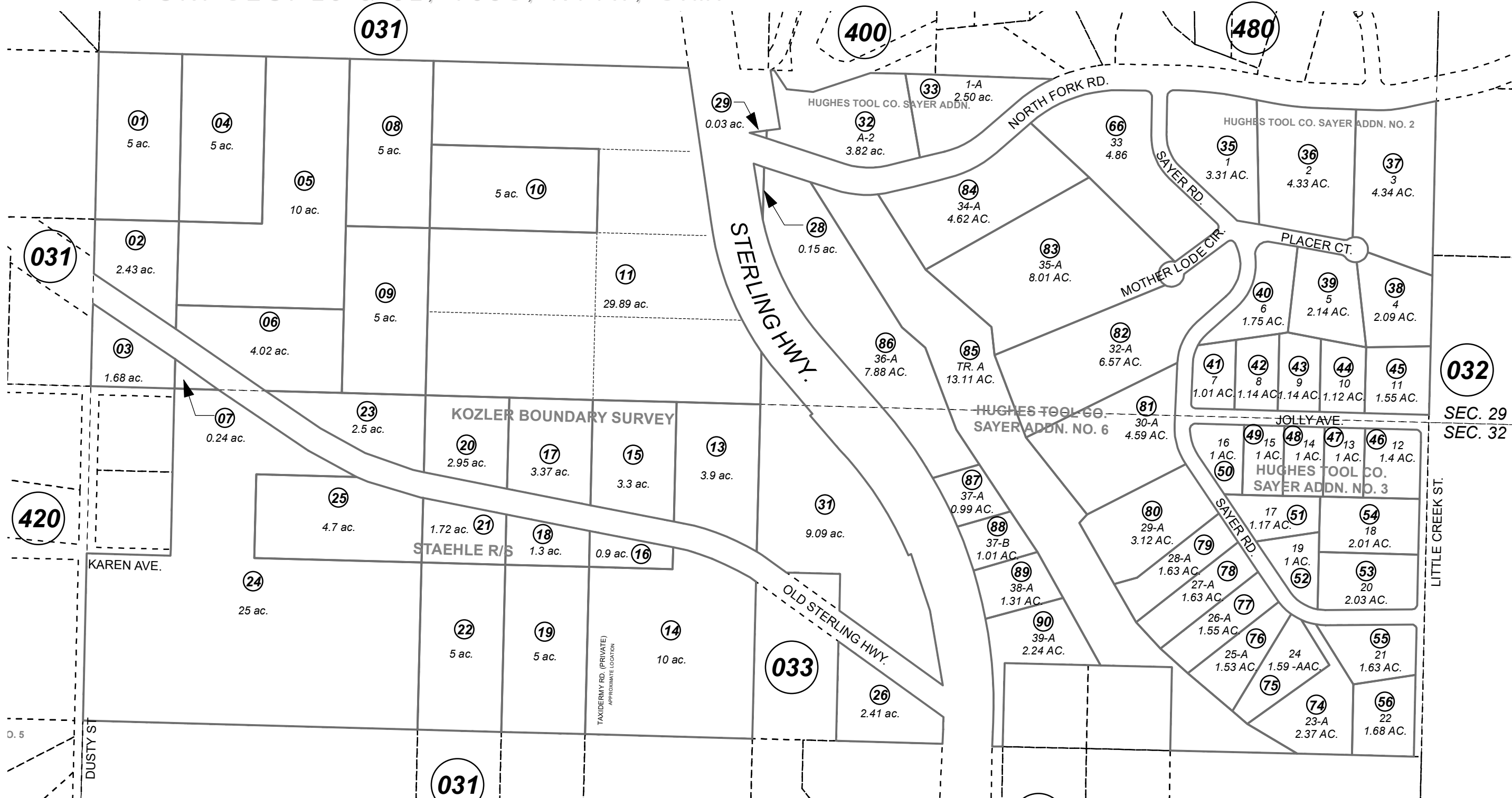


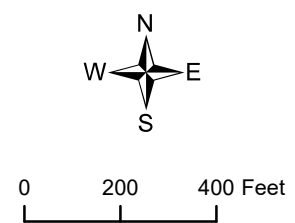
POR. SEC. 29 & 32, T05S, R14W, S.M.

171-070



JUNE 26, 2023

For 2024 assessment roll		
Delete	Add	Revise
		02,03
(ACREAGE REVISION)		



Assessor's Map
Kenai Peninsula Borough

HUGHES TOOL CO SAYER ADDN HM2002070
 HUGHES TOOL CO SAYER ADDN NO 2 HM2005038
 HUGHES TOOL CO SAYER ADDN NO 3 HM2006019
 HUGHES TOOL CO SAYER ADDN NO 6 HM2007110
 RECORD OF SURVEY HM2021003

This map is prepared for Kenai Peninsula Borough Assessing Dept. use only and is not intended for conveyance nor is it a survey.

Note- Assessor's block Numbers Shown in Ellipses
Assessor's Parcel Numbers Shown in Circles