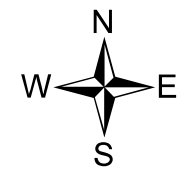
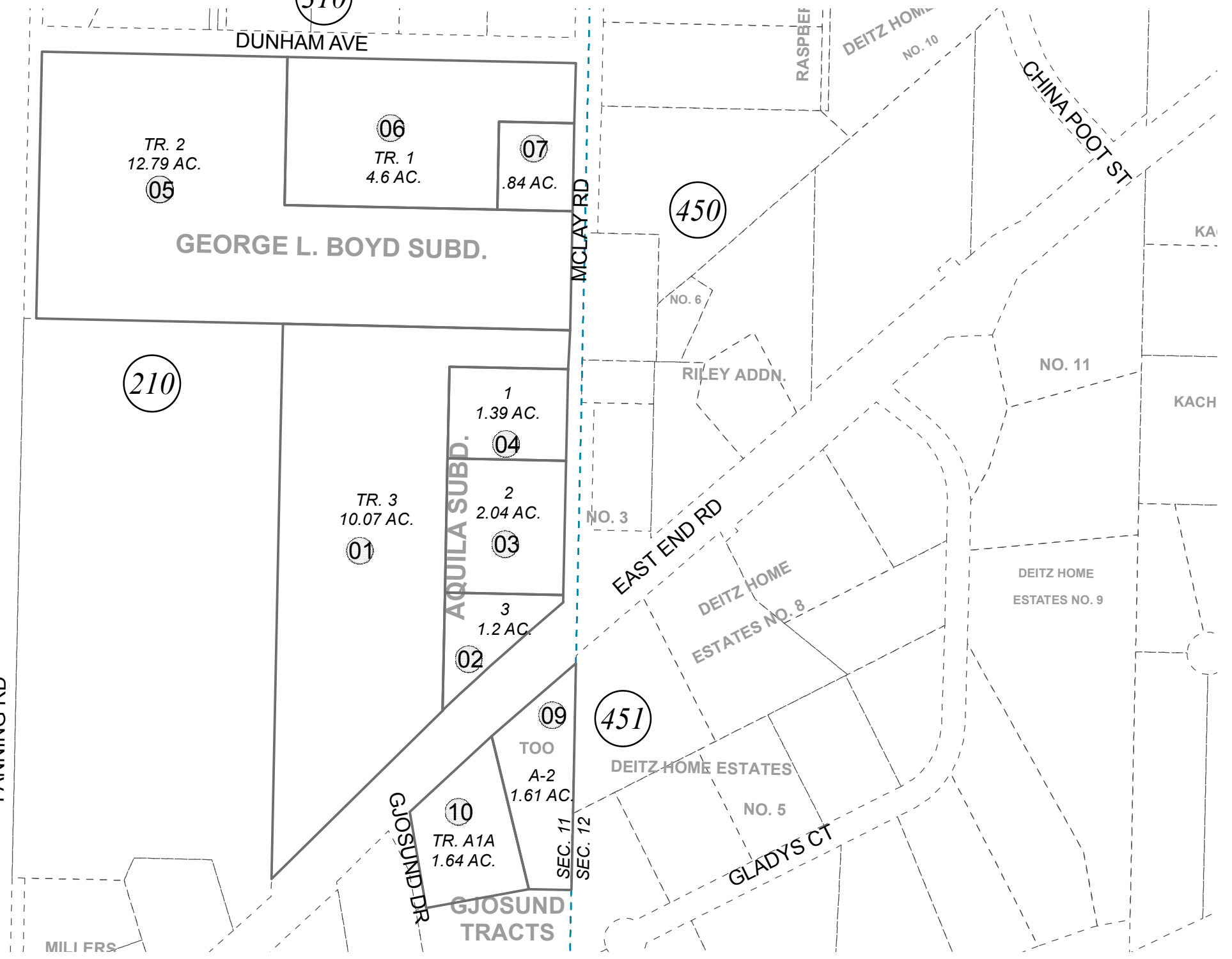


POR. E1/2 NE1/4 SEC. 11, T06S, R13W, S.M. (310)

174-430

11



0 100 200 Feet

FEBRUARY 11, 2015

For 2016 assessment roll		
Delete	Add	Revise
		09
To		
(ACREAGE CHANGE)		

Assessor's Map
Kenai Peninsula Borough

(210)

- HM0760070 GEORGE L BOYD SUB
- HM0820027 AQUILA SUB
- HM0840076 GJOSUND TRACTS TOO
- HM0900040 GJOSUND TRACTS
- HM2013-003176-0 WARRANTY DEED

This map is prepared for Kenai Peninsula Borough Assessing Dept. use only and is not intended for conveyance nor is it a survey.
Note- Assessor's block Numbers Shown in Ellipses
Assessor's Parcel Numbers Shown in Circles