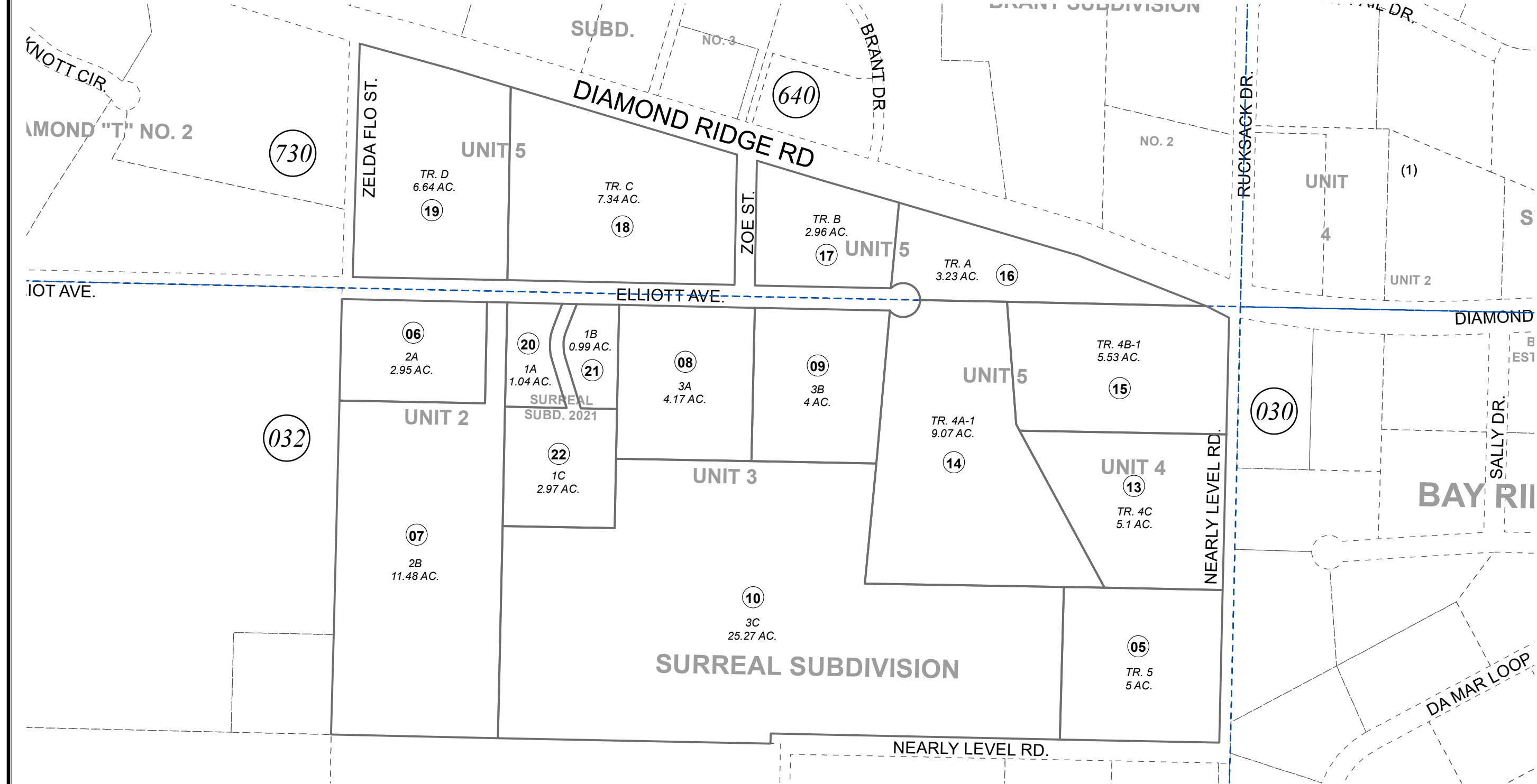


POR. SEC. 11 & SEC. 2, T06S, R14W

173-710



JUNE 25, 2021

For 2022 assessment roll		
Delete	Add	Revise
To		
02	20-22	



0 50 100 200 Feet

Assessor's Map  
Kenai Peninsula Borough

- SURREAL SUB HM0820006
- SURREAL SUB UNIT 2 HM0830076
- SURREAL SUB UNIT 3 HM0900026
- SURREAL SUB UNIT 4 HM0980032
- SURREAL SUB UNIT 5 HM2010059
- SURREAL SUB 2021 HM2021013

Note- Assessor's block Numbers Shown in Ellipses  
Assessor's Parcel Numbers Shown in Circles

This map is prepared for Kenai Peninsula Borough Assessing Dept. use only and is not intended for conveyance nor is it a survey.