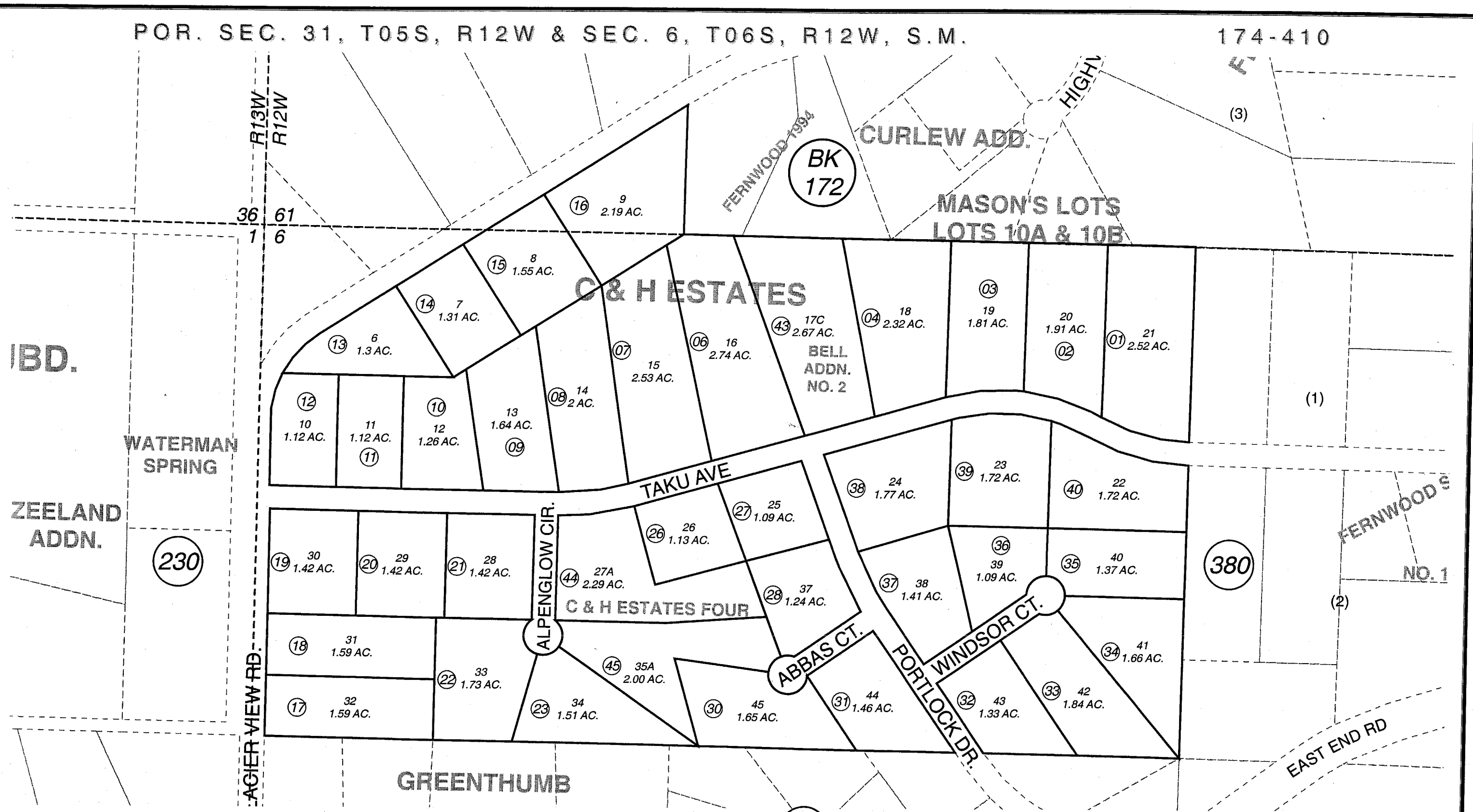


POR. SEC. 31, T05S, R12W & SEC. 6, T06S, R12W, S.M.

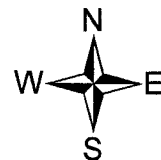
174-410



JANUARY 5, 2006

For 2006 assessment roll

Delete	Add	Revise
	To	
24,25,29	44,45	



Assessor's Map  
Kenai Peninsula Borough

C & H ESTATES SUB HM0800023  
C & H ESTATES BELL ADDN NO 2 HM2000058  
C & H ESTATES SUB FOUR HM2005086

This map is prepared for Kenai Peninsula Borough Assessing Dept. use only and is not intended for conveyance nor is it a survey.

Note- Assessor's block Numbers Shown in Ellipses  
Assessor's Parcel Numbers Shown in Circles