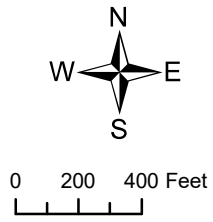
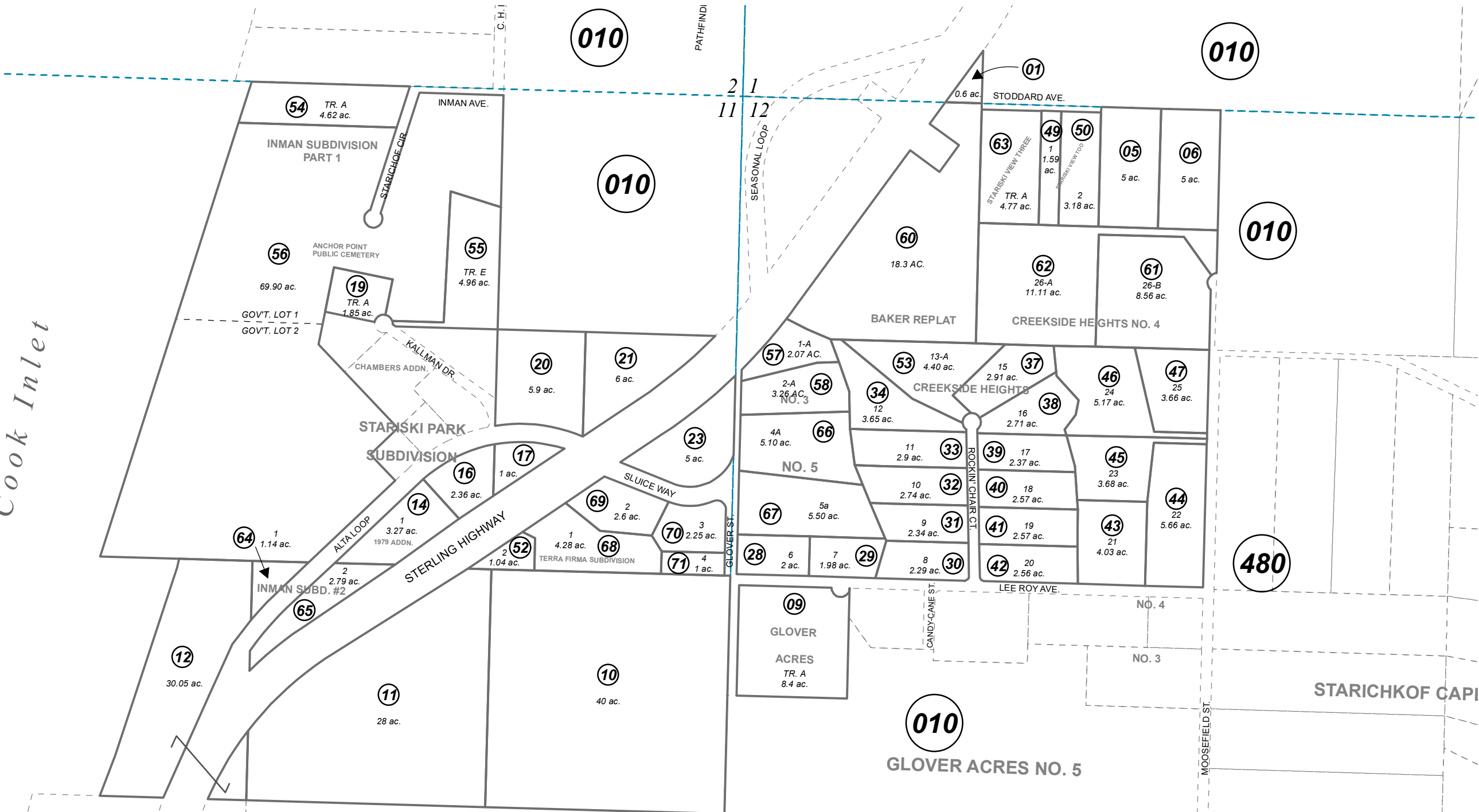


Cook Inlet



DECEMBER 4, 2023

For 2024 assessment roll		
Delete	Add	Revise
	To	
51	68-71	

Assessor's Map
Kenai Peninsula Borough

- ANCHOR POINT PUBLIC CEMETARY HM0721473
- GLOVER ACRES SUB HM0750007
- STARISKI VIEW SUB HM0790132
- STARISKI PARK SUB 1979 ADDN HM0790134
- STARISKI VIEW TOO HM0960033
- CREEKSIDE HEIGHTS AMENDED HM0980010
- TERRA FIRMA SUB HM2000066
- CREEKSIDE HEIGHTS BAKER REPLAT HM2001057
- INMAN SUB PART 1 HM2003017
- CREEKSIDE HEIGHTS SUB NO 3 HM2005029
- CREEKSIDE HEIGHTS SUB NO 4 HM2005101
- STARISKI VIEW THREE HM2009045
- INMAN SUB #2 HM2012021
- CREEKSIDE HEIGHTS NO 5 HM2014038
- TERRA FIRMA SUB JOHNSON ADDN HM2023047

This map is prepared for Kenai Peninsula Borough Assessing Dept. use only and is not intended for conveyance nor is it a survey.
Note- Assessor's block Numbers Shown in Elipses
Assessor's Parcel Numbers Shown in Circles