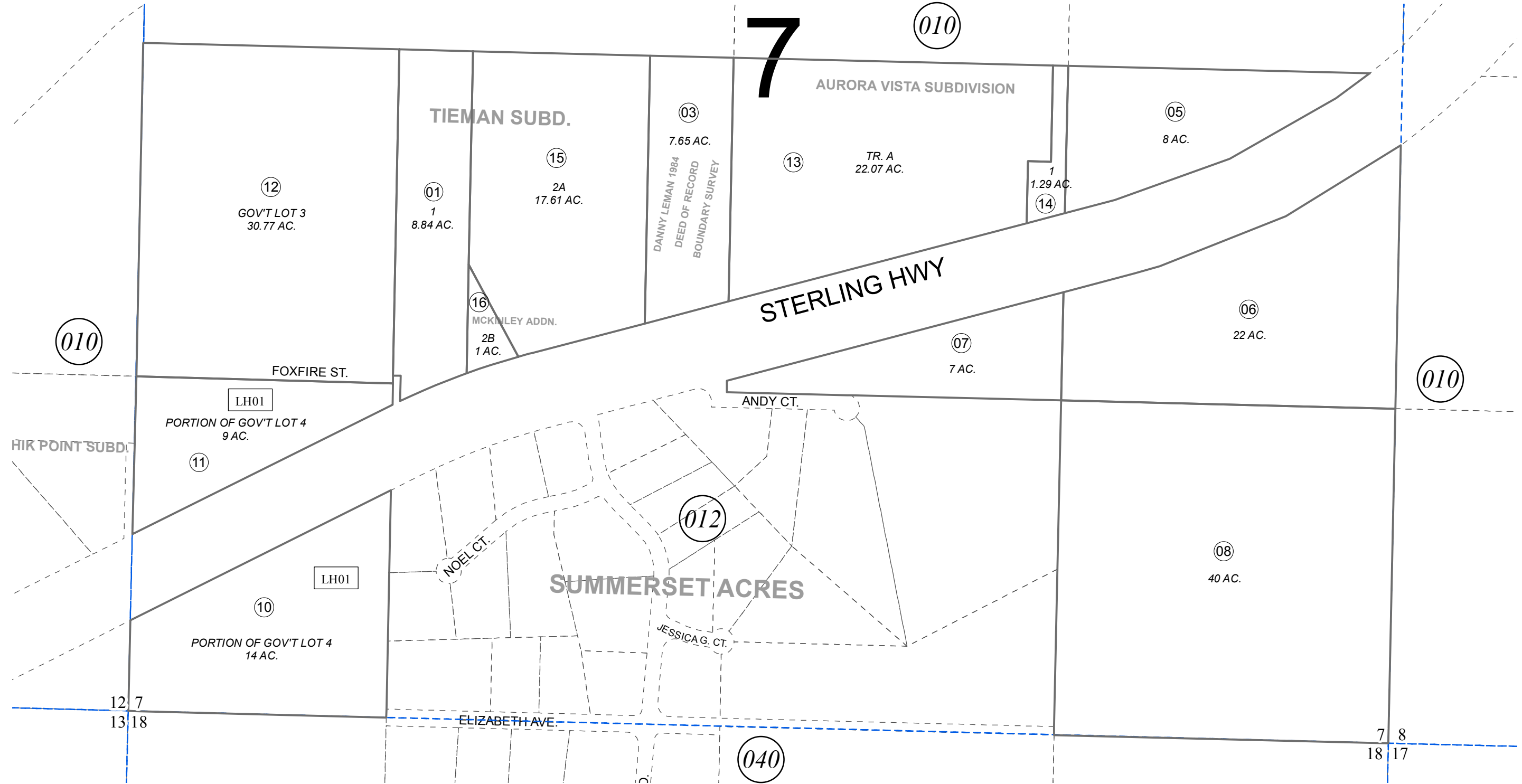


S 1/2 SEC. 7, T01S, R13W, S.M.

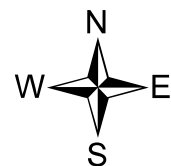
157-011

7



APRIL 15, 2016

For 2017 assessment roll		
Delete	Add	Revise
	To	10,11
(ADDED LEASE HOLD REFERENCE)		



0 125 250 500 Feet

Assessor's Map
Kenai Peninsula Borough

TIEMAN SUB LOTS 1 & 2 HM0850129
 AURORA VISTA HM0960013
 TIEMAN SUB MCKINLEY ADDN HM2009057

Note- Assessor's block Numbers Shown in Ellipses
 Assessor's Parcel Numbers Shown in Circles

This map is prepared for Kenai Peninsula Borough Assessing Dept. use only and is not intended for conveyance nor is it a survey.