

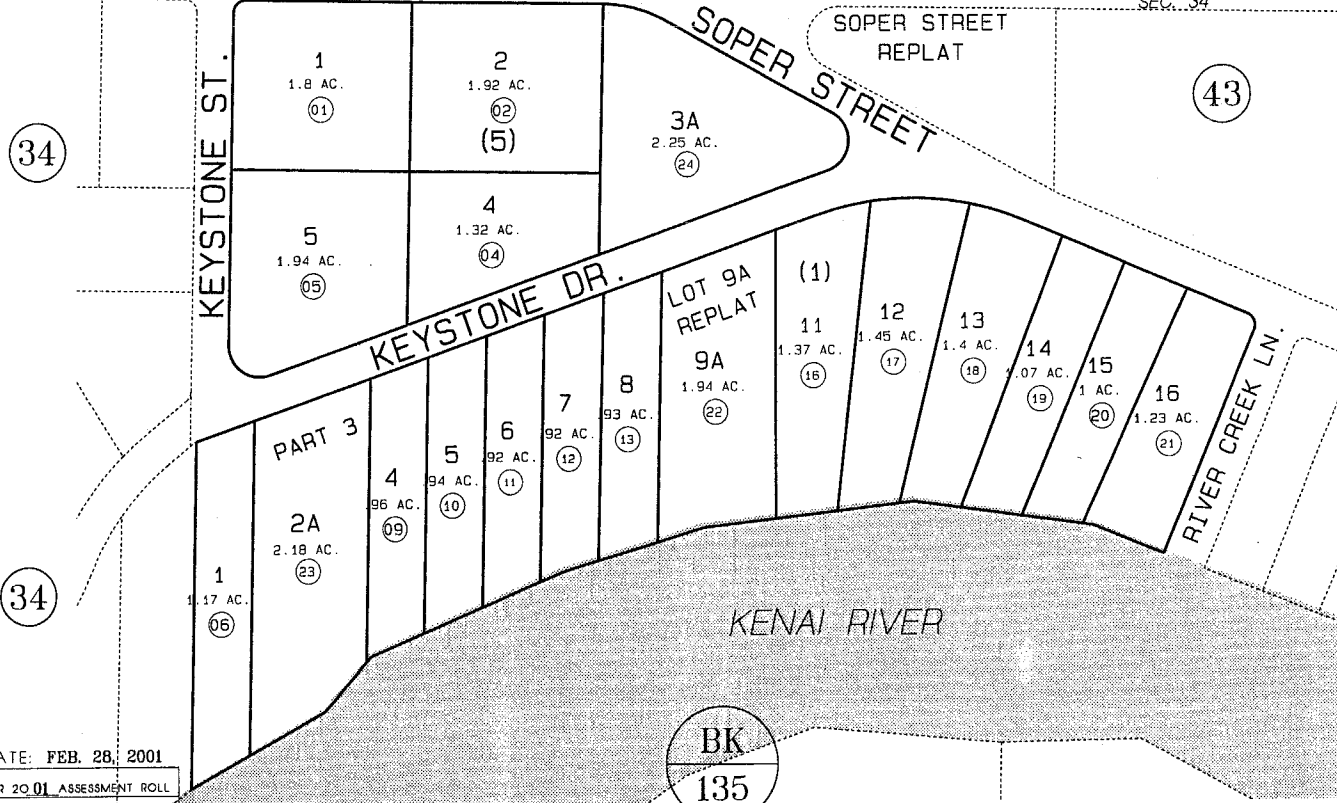
BK
59

KEYSTONE SUBD. PART ONE

EAST REDOUBT AVE.

SEC. 27

SEC. 34



34

43

34

BK
135

DATE: FEB. 28, 2001

FOR 2001 ASSESSMENT ROLL

DELETE	ADD	REVISED

TO

3 24

Assessor's Map
Kenai Peninsula Borough

KN750085 KEYSTONE ESTATES SUB PART 1
 KN840118 KEYSTONE ESTATES SUB LOT 9-A BLOCK 1
 KN910060 KEYSTONE ESTATES SUB PART 3
 KN200069 KEYSTONE ESTATES SOPER STREET REPLAT

THIS MAP IS PREPARED FOR KENAI PENINSULA BOROUGH ASSESSING DEPT. USE ONLY AND IS NOT INTENDED FOR CONVEYANCE. NOR IS IT A SURVEY.
 NOTE - Assessor's Black Numbers Shown In Ellipses
 Assessor's Parcel Numbers Shown In Circles