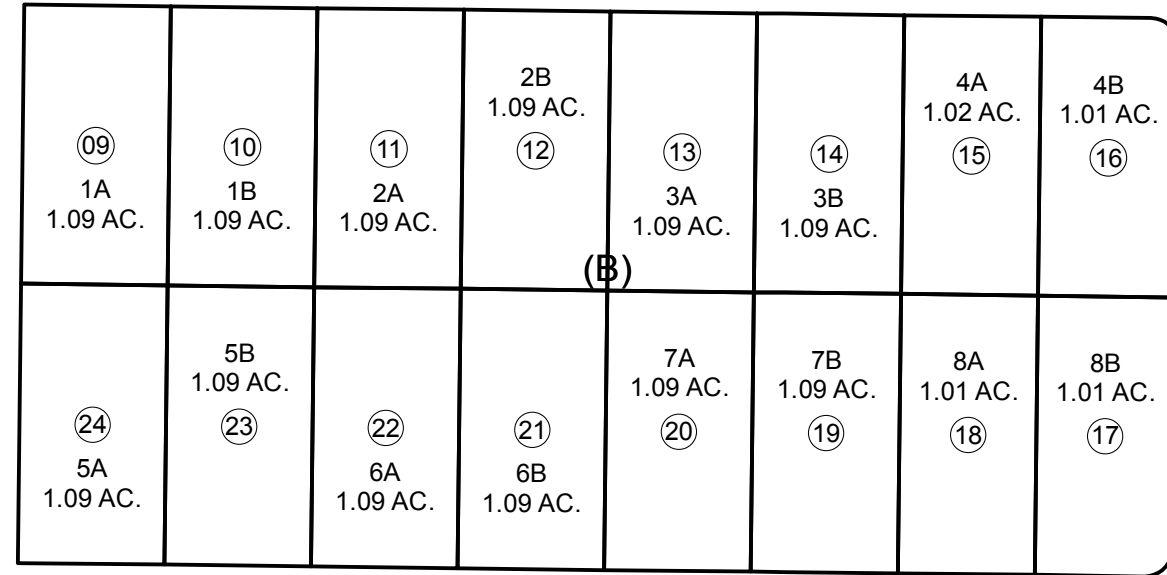
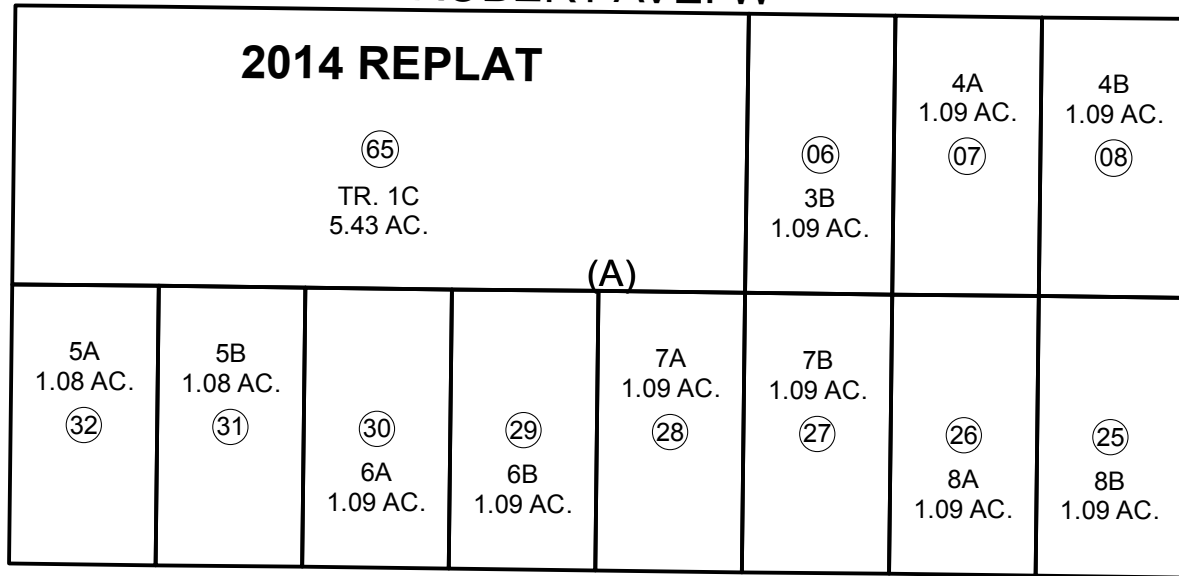


N 1/2 SE 1/4 SEC, 25, T05N, R09W, S.M.

066-443

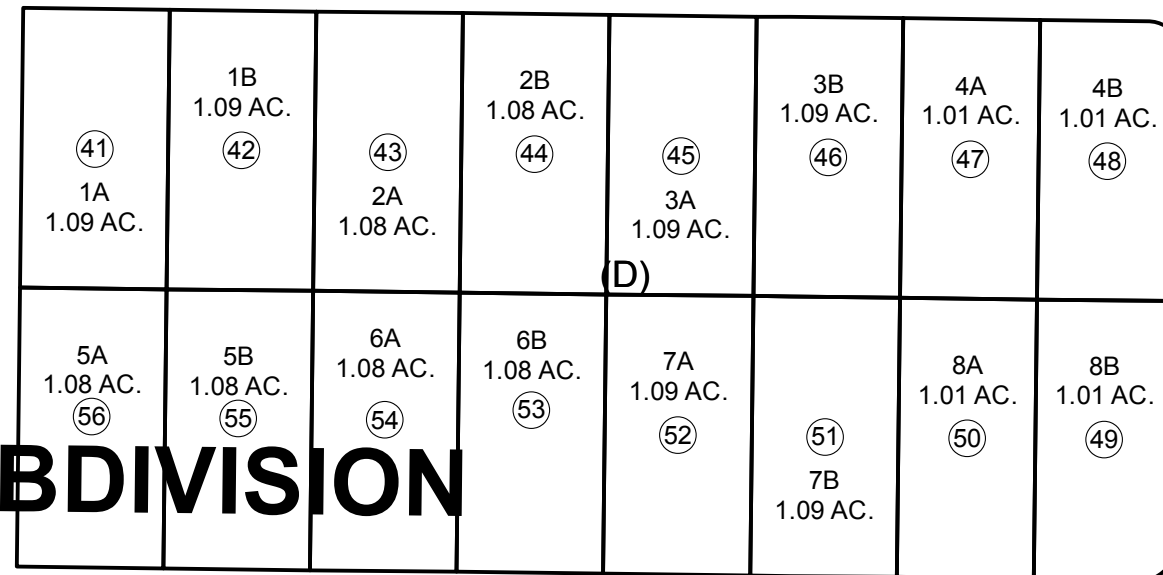
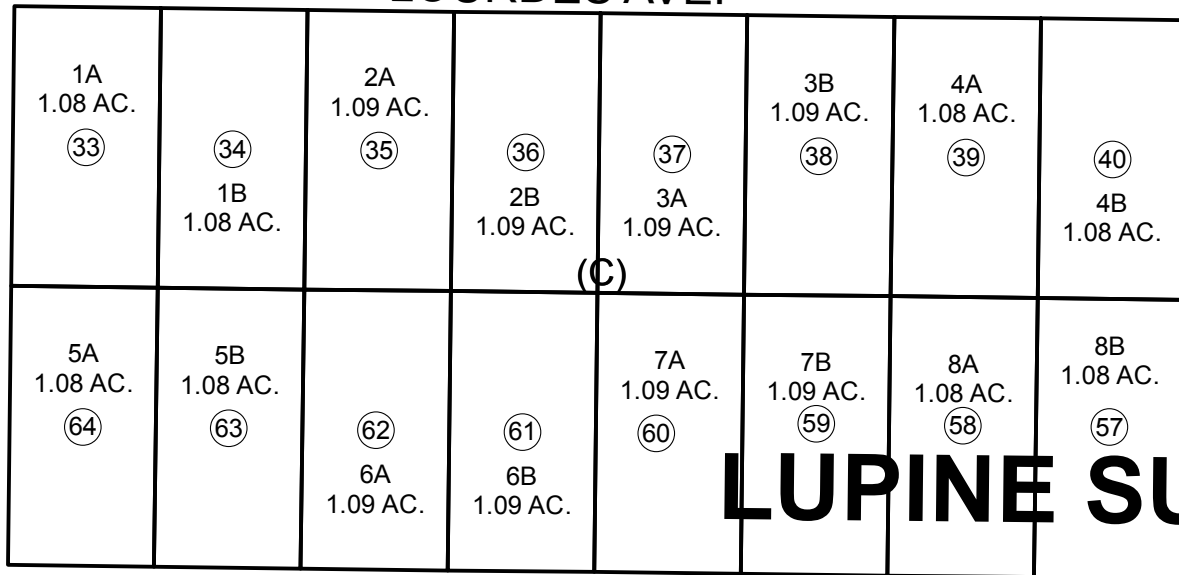
040

ROBERT AVE. W



SOLITUDE ST.

LOURDES AVE.

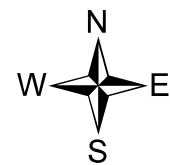


ROYCE ST.
T05N-R09W SEC. 25
T05N-R08W SEC. 30

ROBIN AVE.

NO. 2

444



0 50 100 200 Feet

DECEMBER 9, 2014

For 2015 assessment roll		
Delete	Add	Revise
To		
01 - 05	65	

Assessor's Map
Kenai Peninsula Borough

LUPINE SUB NO 2 KN084296
LUPINE SUB 2014 REPLAT KN2014087

This map is prepared for Kenai Peninsula Borough Assessing Dept. use only and is not intended for conveyance nor is it a survey.
Note- Assessor's block Numbers Shown in Ellipses
Assessor's Parcel Numbers Shown in Circles

LUPINE SUBDIVISION