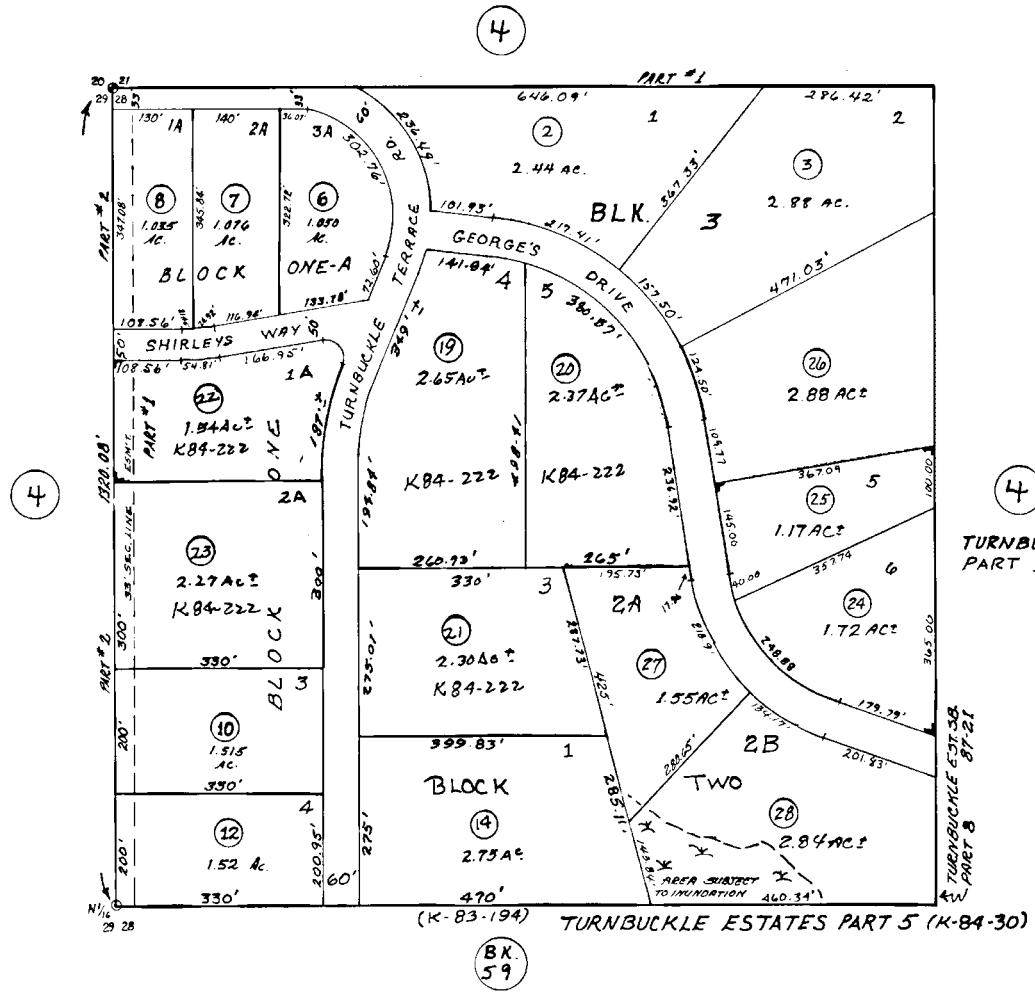


NW 1/4 NW 1/4 SEC. 28, T5N, R10W, S.B. & M.

57-65



TURNBUCKLE ESTATES SUB. PART SEVEN (KN85-242)

TURNBUCKLE ESTATES SUB. PART 1 (K-80-67)

PART 6 K84-222

TURNBUCKLE ESTATES SUB. PART 2 & RESUB. OF

" " TR.A PART 1

(K-81-90) AMENDED (K-82-72)

TURNBUCKLE ESTATES SUB. PART 3

(K-81-146) PART 4 K-83-194

Assessor's Map 9-19-83

Kenai Peninsula Borough, Alaska

NOTE - Assessor's Block Numbers Shown in Ellipses  
Assessor's Parcel Numbers Shown in Circles