

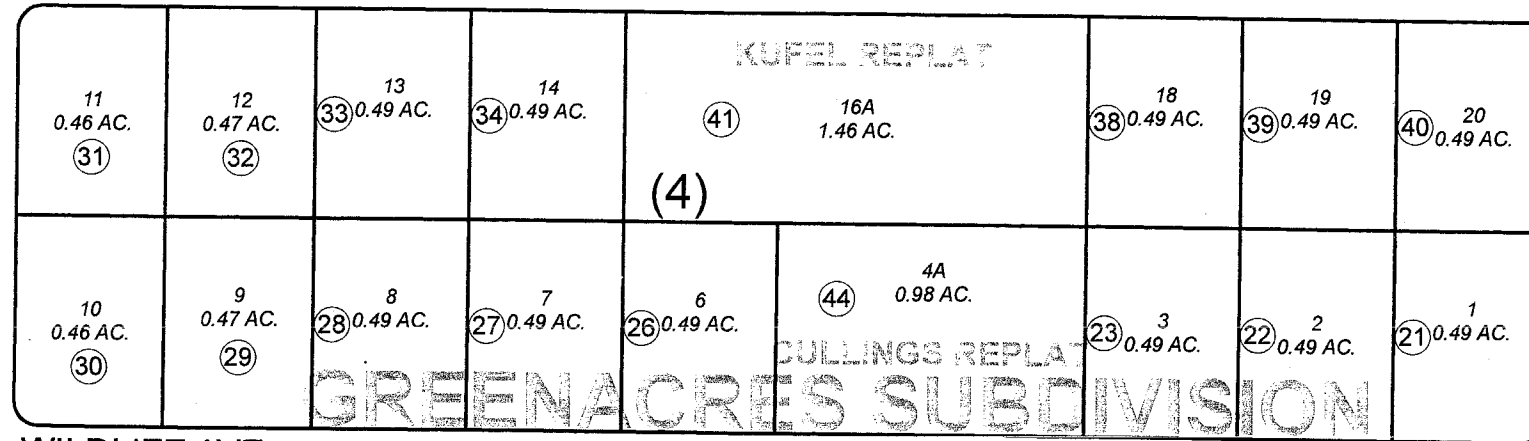
POR. NE1/4 NE1/4 SEC. 27, T05N, R08W, S.M.

065-350

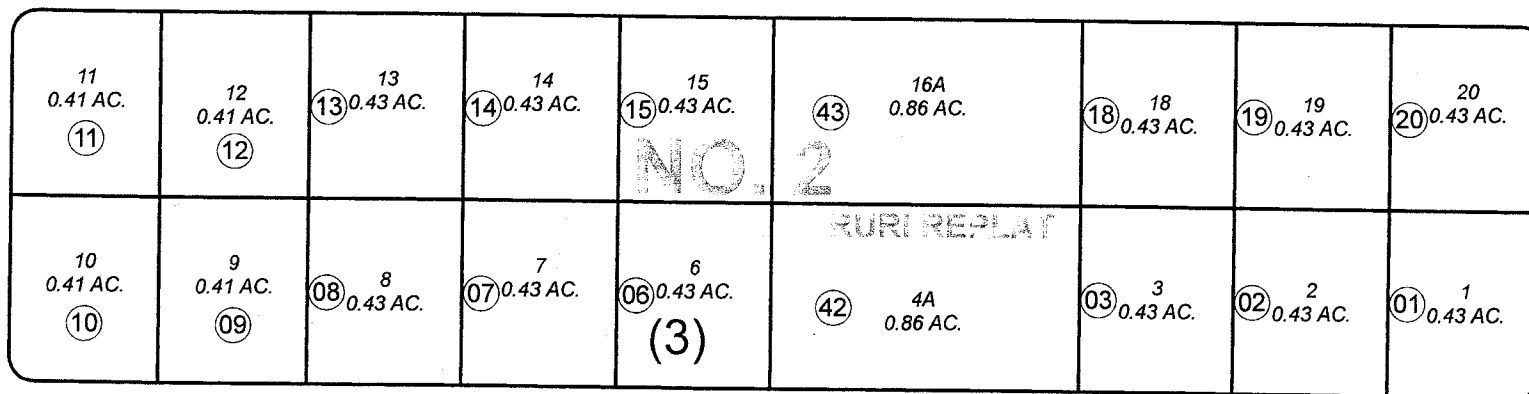
500

ALDER AVE

ODGERS AVE



WILDLIFE AVE



TRIBUTARY AVE

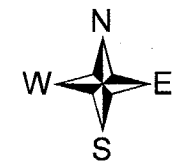
360

181

180

DECEMBER 31, 2007

For 2008 assessment roll		
Delete	Add	Revise
To		
24,25	44	



Assessor's Map  
Kenai Peninsula Borough

GREENACRES SUB NO 2 KN0730029  
GREENACRES SUB KUFEL REPLAT KN0970050  
GREENACRES SUB RURI REPLAT KN0980028  
GREENACRES SUB CULLINGS REPLAT KN2007140

This map is prepared for Kenai Peninsula Borough Assessing Dept. use only and is not intended for conveyance nor is it a survey.

Note- Assessor's block Numbers Shown in Elipses  
Assessor's Parcel Numbers Shown in Circles