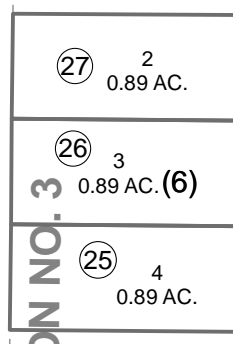
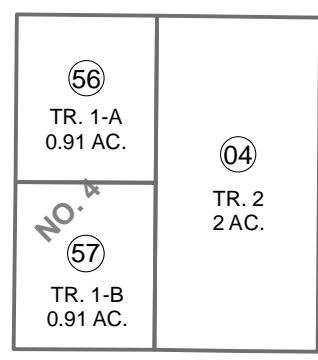
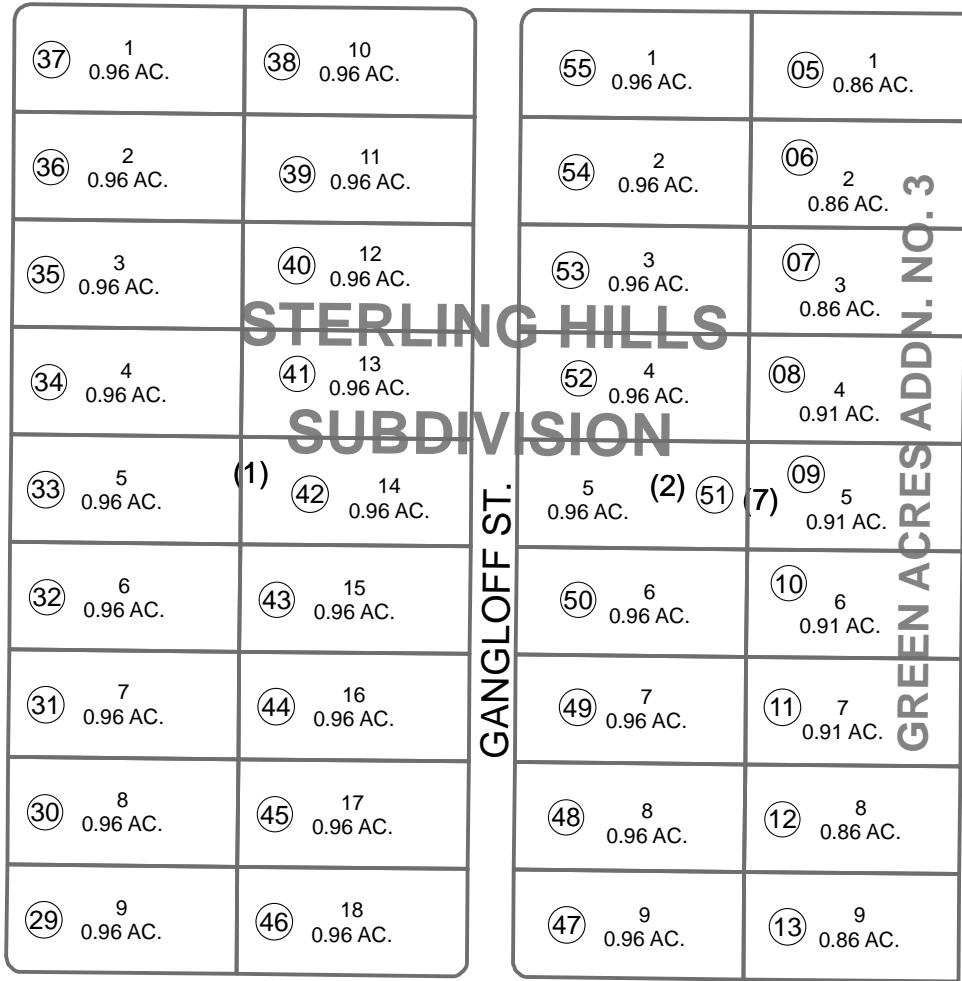


E1/2 SE1/4 SEC. 22 & POR. W1/2 SW1/4 SEC. 23, T05N, R08W, S.M. 065-500

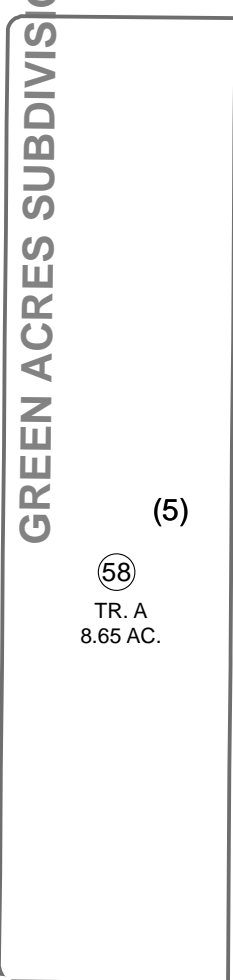
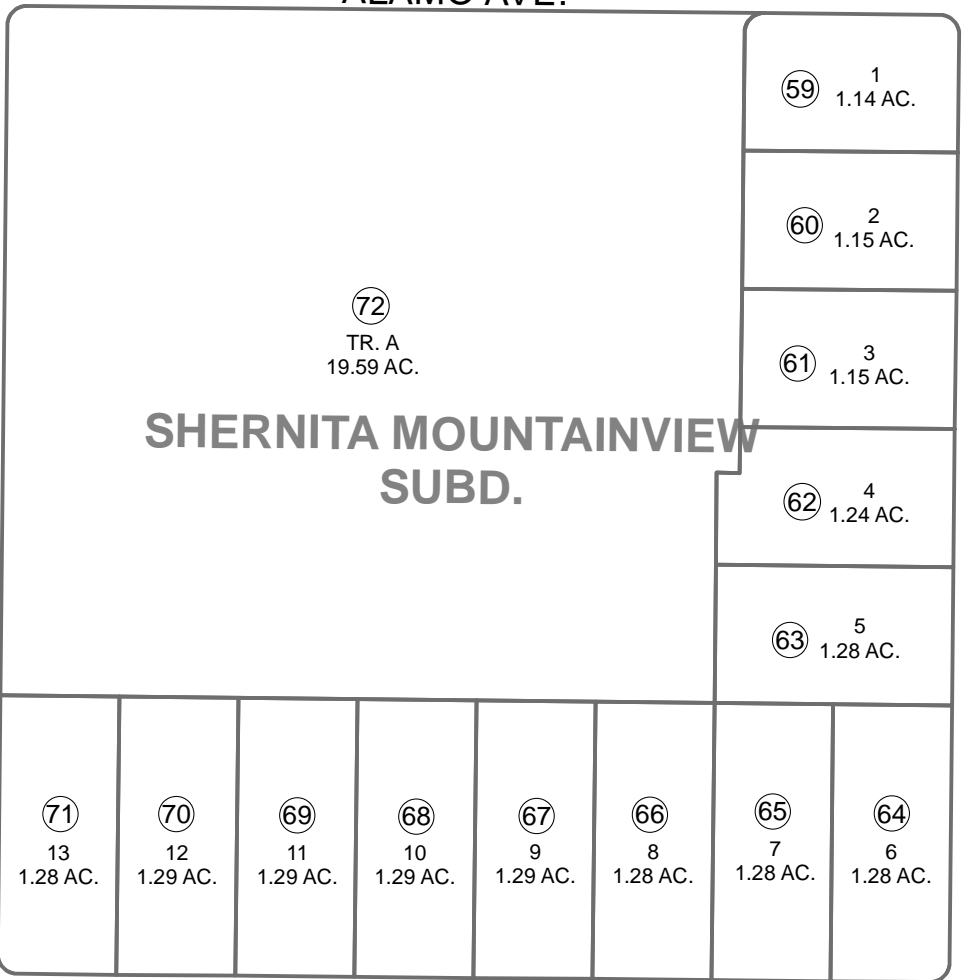
COZY FIRELIGHT ST.

ALBRANT RESUBD.

163



162



(5)

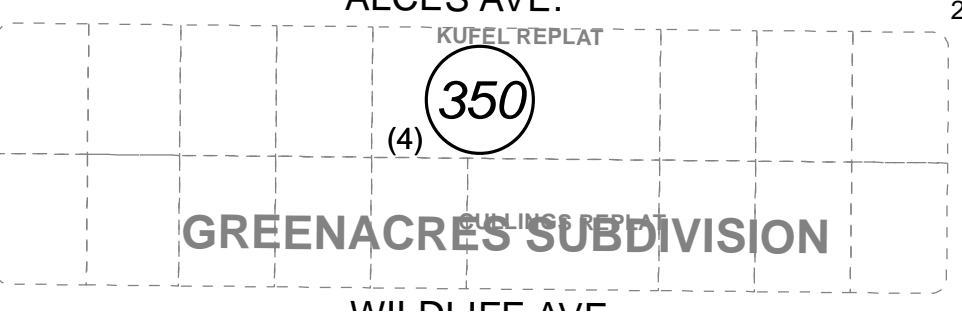
ALAMO AVE.

SN 2004-4

160

ALCES AVE.

22 23
27 26



WILD LIFE AVE

This map is prepared for Kenai Peninsula Borough Assessing Dept. use only and is not intended for conveyance nor is it a survey.

Note- Assessor's block Numbers Shown in Ellipses Assessor's Parcel Numbers Shown in Circles

GREEN ACRES SUB KN0720031
 GREEN ACRES SUB ADDN NO 3 KN0780145
 STERLING HILLS SUB KN0790175
 GREEN ACRES SUB ADDN NO 4 KN0870072
 GREEN ACRES SUB GANGLOFF REPLAT KN0970079
 SHERNITA MOUNTAINVIEW SUB KN2013042

Assessor's Map
 Kenai Peninsula Borough



0 75 150 300 Feet

JULY 10, 2013

For 2014 assessment roll	
Delete	Add
	Revise
To	
01	59-72