

GOV'T. LOTS 3 & 5 SEC. 34, T05N, R10W, S.M.

060-343

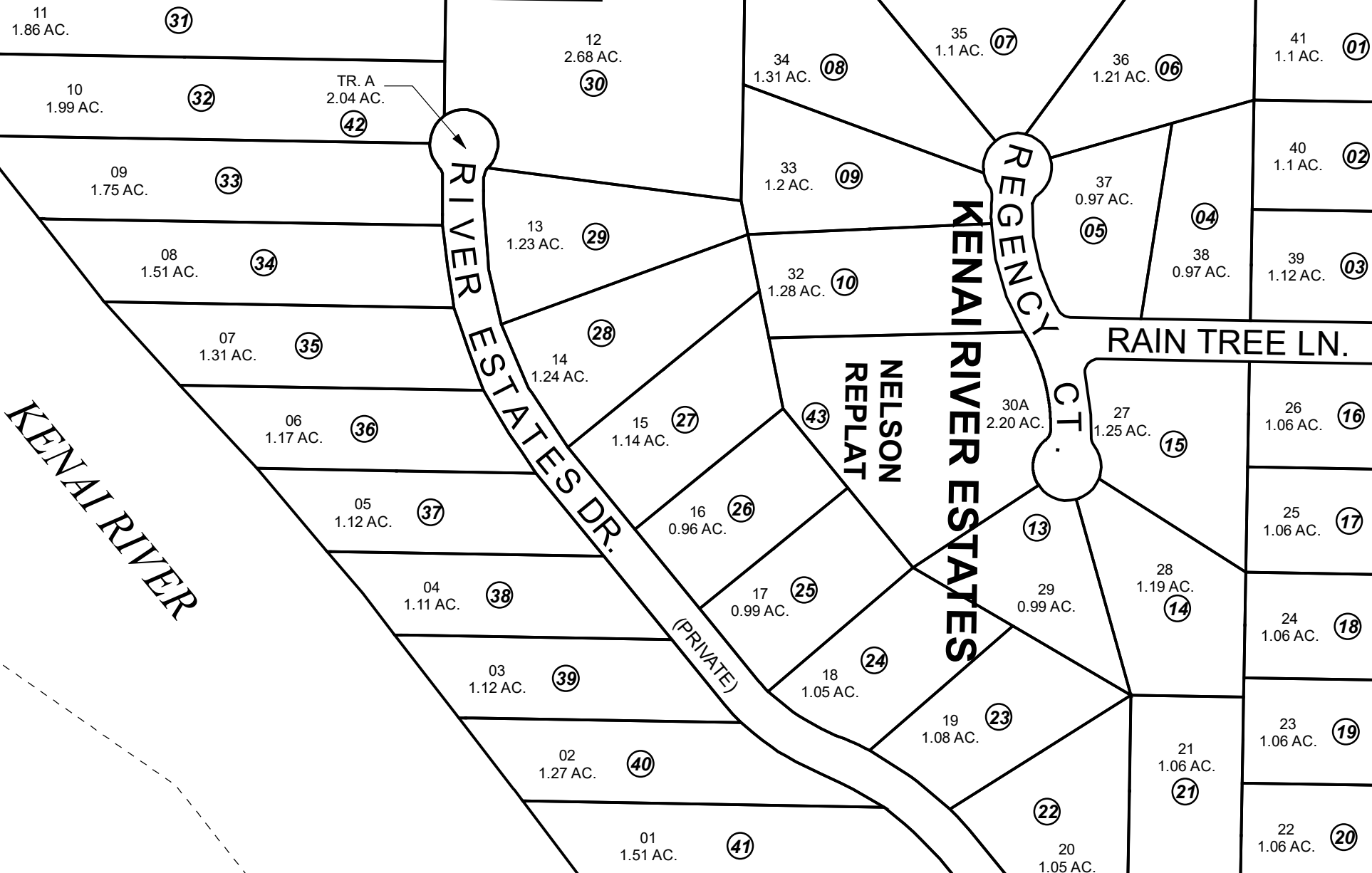
390

344

HESTER AVE.

ING

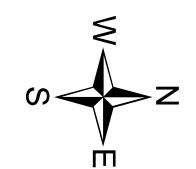
EDOUBT AVE.



340

322

400



0 45 90 180 Feet

DECEMBER 18, 2018

For 2019 assessment roll		
Delete	Add	Revise
To		
11,12	43	

Assessor's Map
Kenai Peninsula Borough

KENAI RIVER ESTATES KN0960044
KENAI RIVER ESTATES NELSON REPLAT KN2018075

This map is prepared for Kenai Peninsula Borough Assessing Dept. use only and is not intended for conveyance nor is it a survey.

Note- Assessor's block Numbers Shown in Ellipses
Assessor's Parcel Numbers Shown in Circles