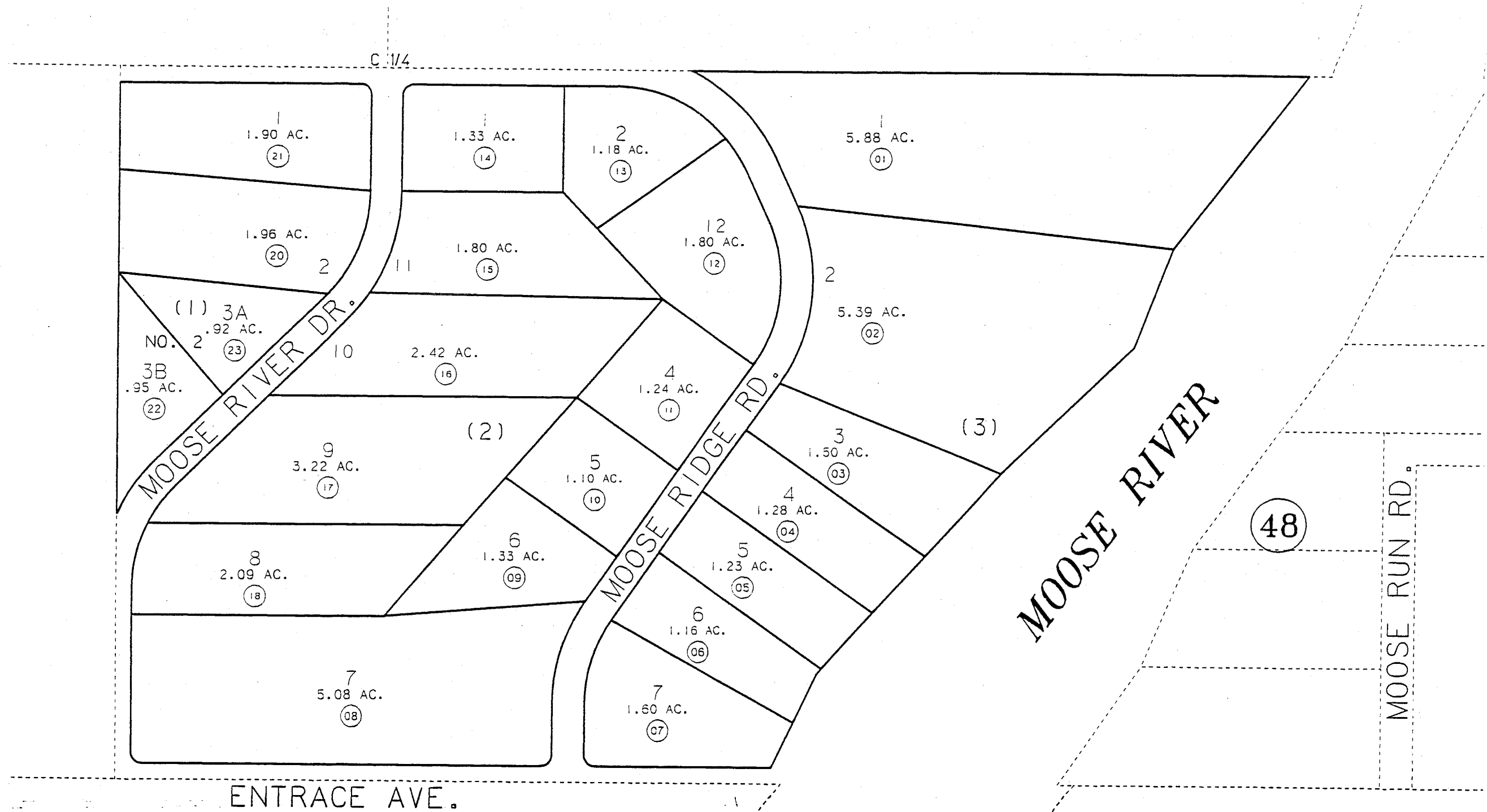


PORTION OF S1/2 SEC. 6, T5N, R8W, SEWARD MERIDIAN

065-490

1

1



DATE: JAN. 10, 1994

FOR 1994 ASSESSMENT ROLL		
DELETE	ADD	REVISED
TO		
19	22,23	

MOOSE RIVER HEIGHTS KN780108
MOOSE RIVER HEIGHTS NO. 2 KN930093

1

NOTE - Assessor's Block Numbers Shown In Ellipses
Assessor's Parcel Numbers Shown In Circles

Assessor's Map
Kenai Peninsula Borough

THIS MAP IS PREPARED FOR KENAI PENINSULA BOROUGH ASSESSING DEPT. USE ONLY AND IS NOT INTENDED FOR ANY OTHER USE OR REPRESENTATION