

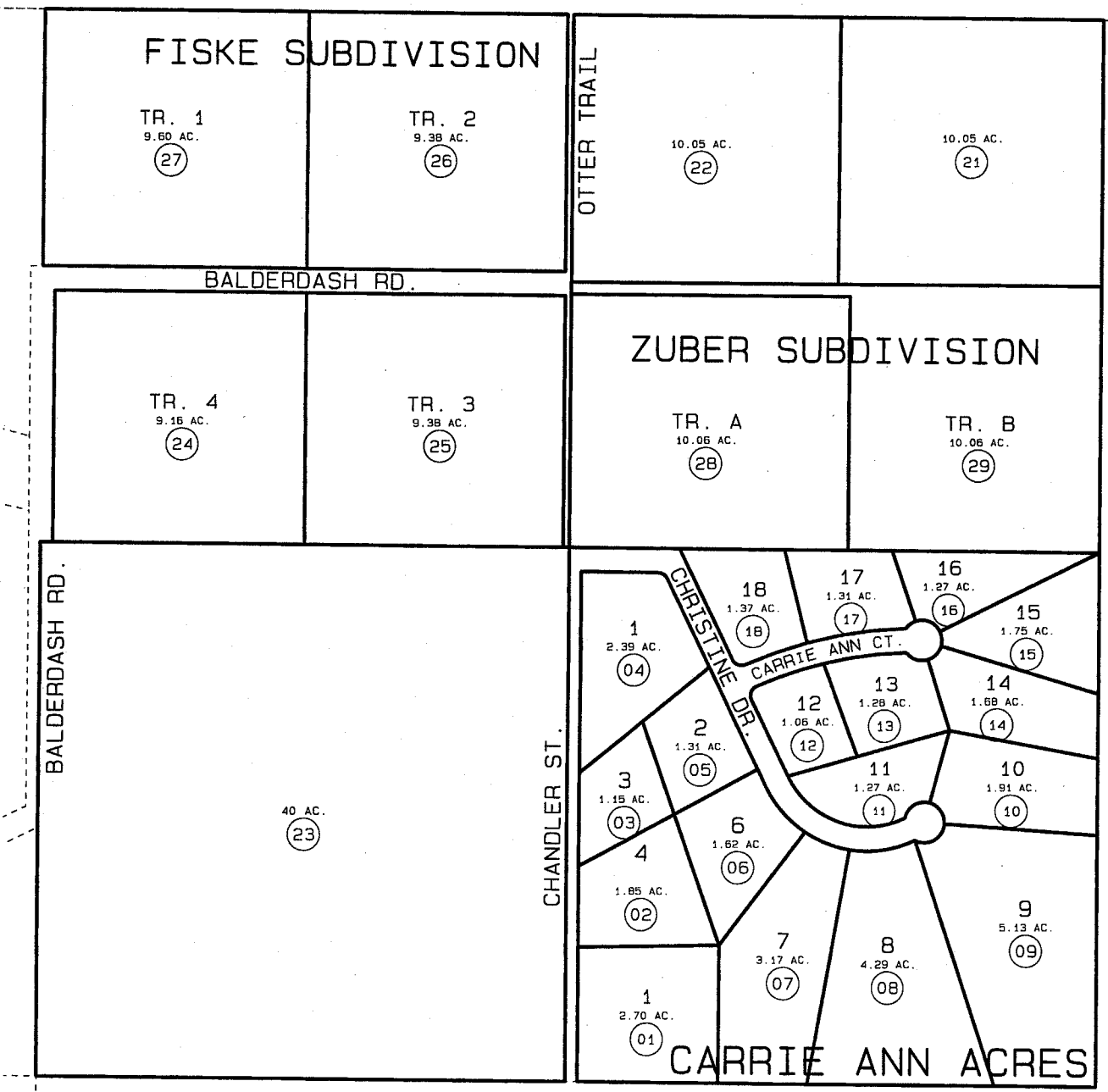
PORTION OF N1/2, SEC. 5, T5N, R8W, SEWARD MERIDIAN

065-481

BK
49

48

501



501



DATE: JAN. 10, 1994

FOR 1994 ASSESSMENT ROLL		
DELETE	ADD	REVISED
TO		
19,20	28,29	

FISKE KN720051
 CARRIE ANN ACRES KN850165
 ZUBER KN930091

Assessor's Map
 Kenai Peninsula Borough

THIS MAP IS PREPARED FOR KENAI PENINSULA BOROUGH ASSESSING DEPT. USE ONLY AND IS NOT INTENDED FOR ANY OTHER USE OR REPRESENTATION

NOTE - Assessor's Block Numbers Shown In Ellipses
 Assessor's Parcel Numbers Shown In Circles