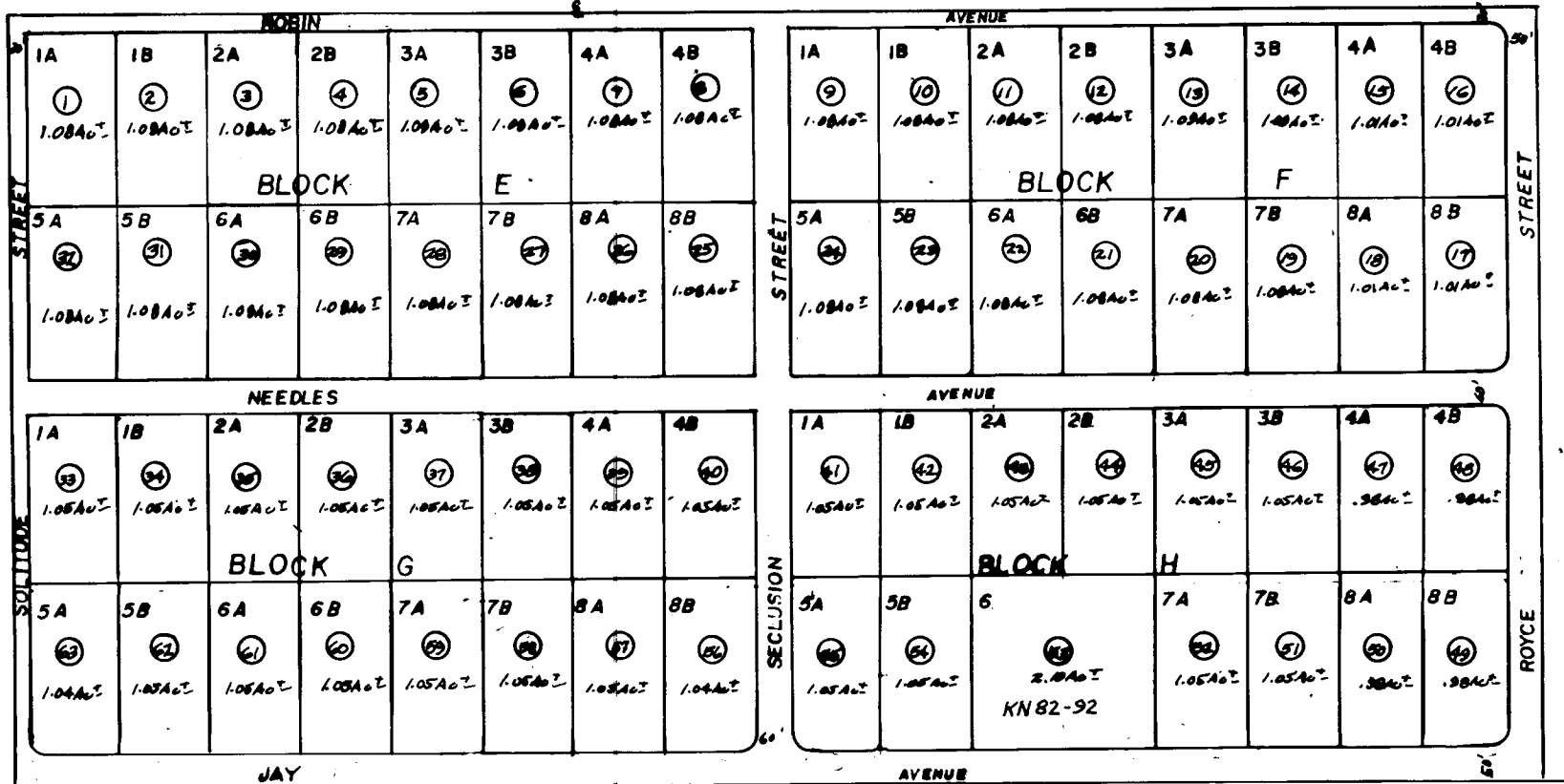


S 1/2 SE 1/4 SEC. 25, T.5N., R.9W., S.M.

066-444



LUPINE SUB. KN 82-92
 LUPINE SUB. NO. 2 KN-84-296

Assessor's Map
 Kenai Peninsula Borough, Alaska

NOTE - Assessor's Block Numbers Shown in Ellipses
 Assessor's Parcel Numbers Shown in Circles