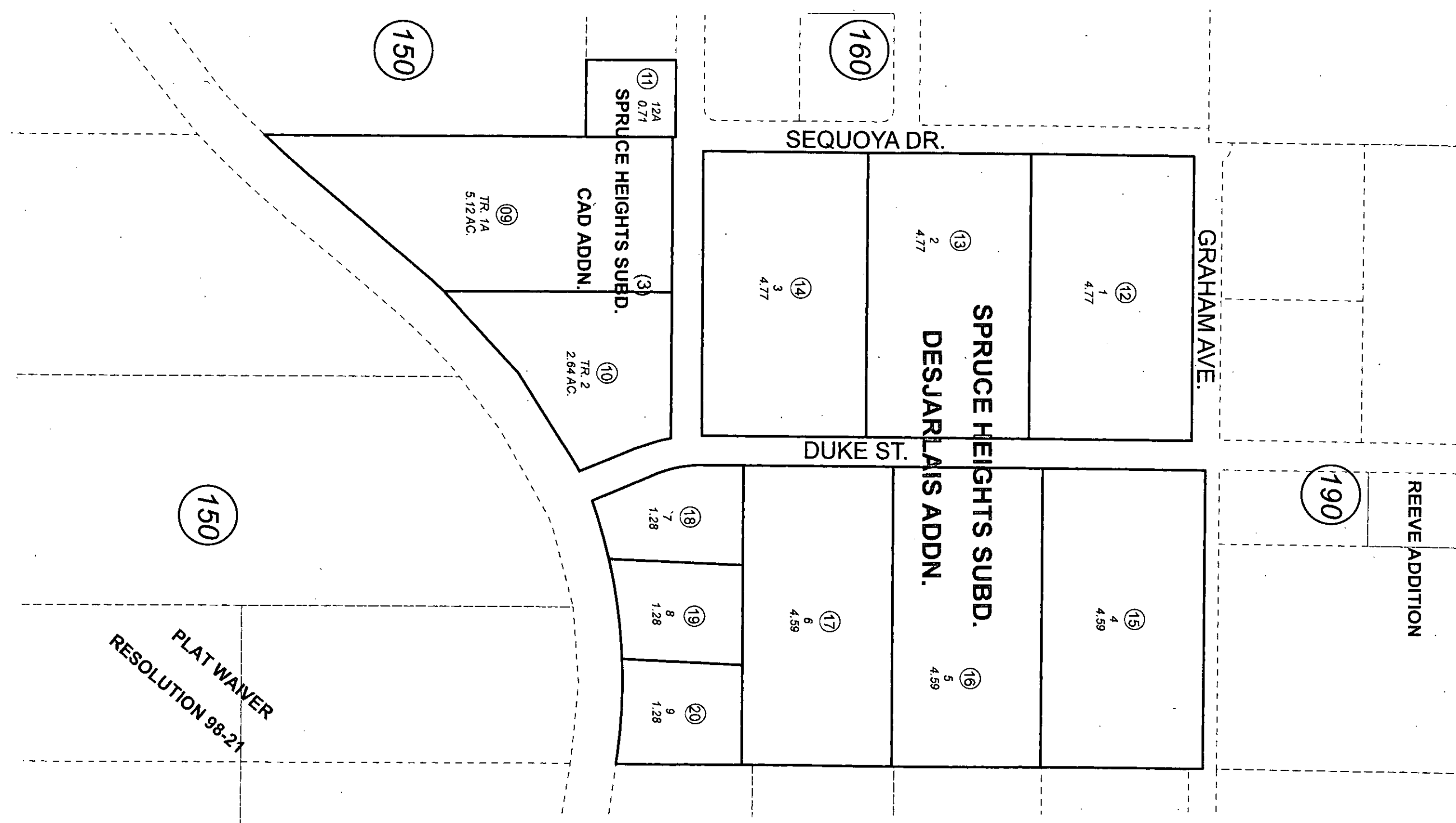


POR. W1/2 SE1/4 SEC. 23, T07N, R12W, S.M.

014-280



PLAT WAIVER
RESOLUTION 98-21

JUNE 2, 2011

For 2012 assessment roll		
Delete	Add	Revise
To		
01-03	12-20	



1" = 226 feet

Assessor's Map
Kenai Peninsula Borough

SPRUCE HEIGHTS SUB PART 1 KN0720026
 SPRUCE HEIGHTS SUB CAD ADDN KN0970101
 SPRUCE HEIGHTS SUB DESJARLAIS ADDN KN2011019

Note- Assessor's block Numbers Shown in Ellipses
 Assessor's Parcel Numbers Shown in Circles

This map is prepared for Kenai Peninsula Borough Assessing Dept. use only and is not intended for conveyance nor is it a survey.