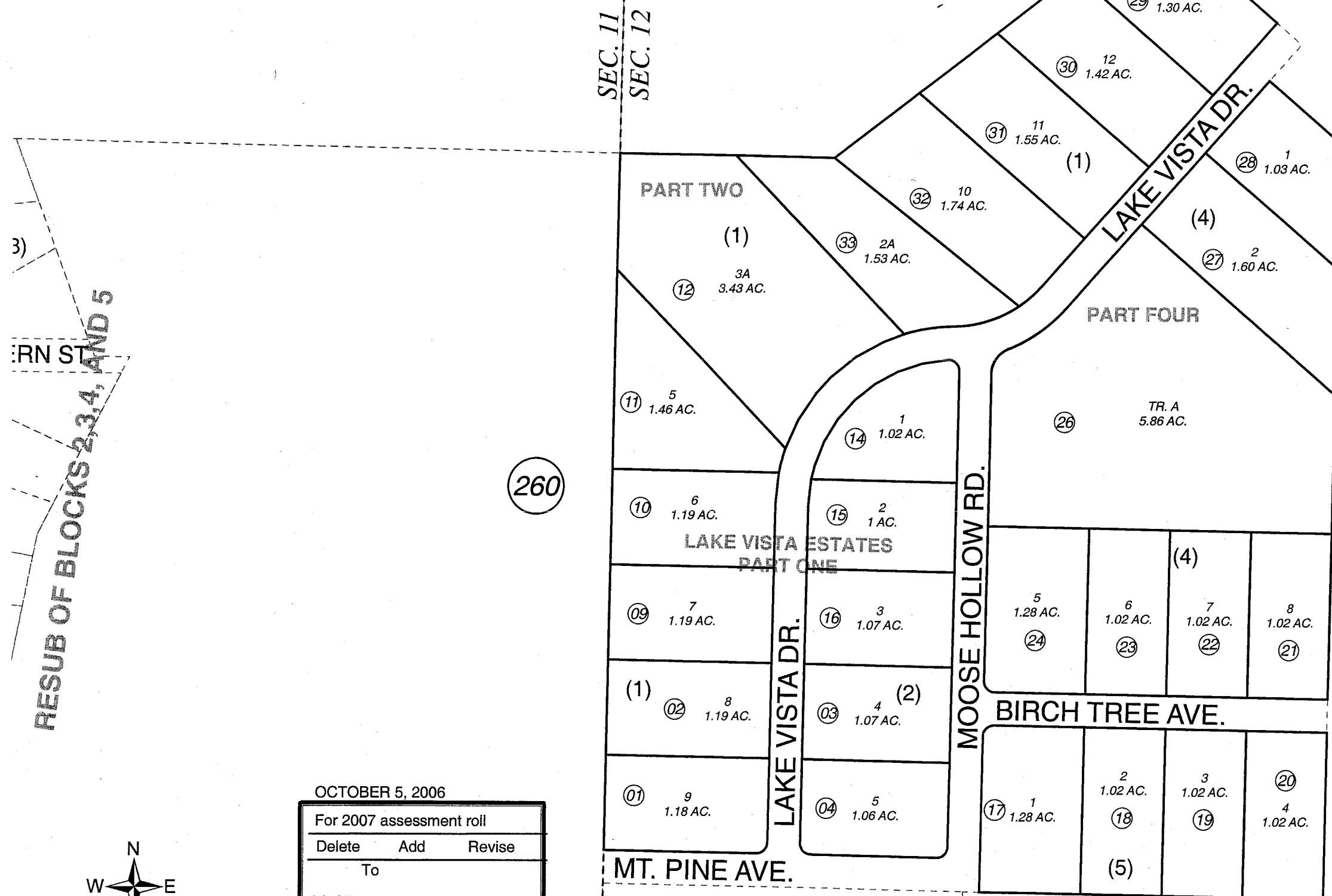
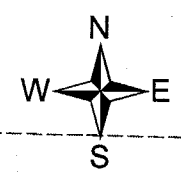


LAKE VISTA ESTATES PART 1 □ KN0940047
 LAKE VISTA ESTATES PART 3 □ KN0950048
 LAKE VISTA ESTATES PART 4 □ KN2006071



RESUB OF BLOCKS 2, 3, 4, AND 5
 ERN ST



OCTOBER 5, 2006

For 2007 assessment roll		
Delete	Add	Revise
	To	
13,25	26-33	

Assessor's Map
 Kenai Peninsula Borough

This map is prepared for Kenai Peninsula Borough Assessing Dept. use only and is not intended for conveyance nor is it a survey.

Note- Assessor's block Numbers Shown in Elipses
 Assessor's Parcel Numbers Shown in Circles