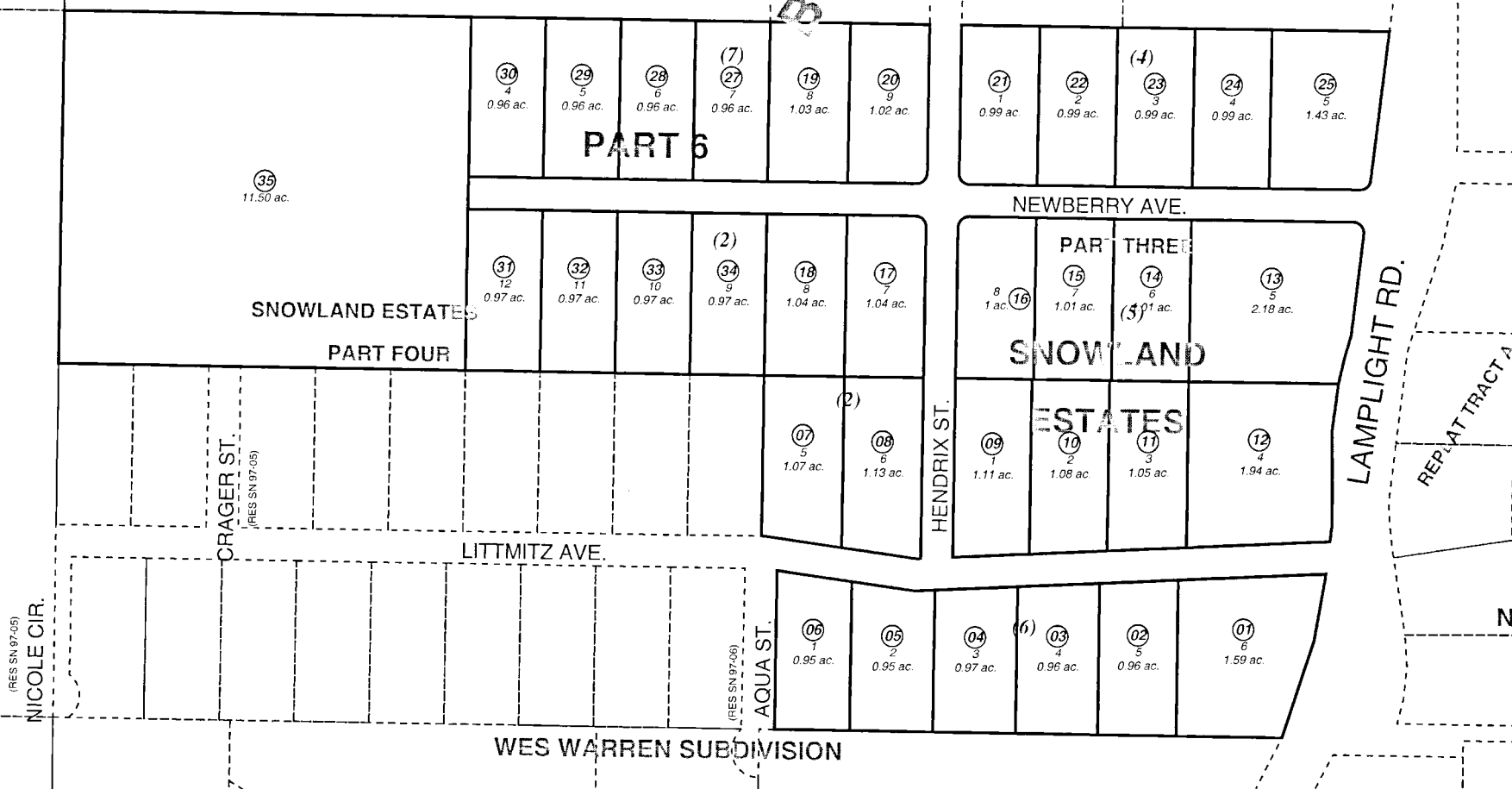


BY



OCTOBER 29, 2002

For 2003 assessment roll		
Delete	Add	Revise
	To	
26	27-35	

Assessor's Map
Kenai Peninsula Borough

SNOWLAND ESTATES SUB PART 1 KN0790109
 SNOWLAND ESTATES SUB PART 3 KN0850071
 SNOWLAND ESTATES SUB PART 6 KN2002070

This map is prepared for Kenai Peninsula Borough Assessing Dept use only and is not intended for conveyance nor is it a survey.
 Note- Assessor's block Numbers Shown in Ellipses
 Assessor's Parcel Numbers Shown in Circles