

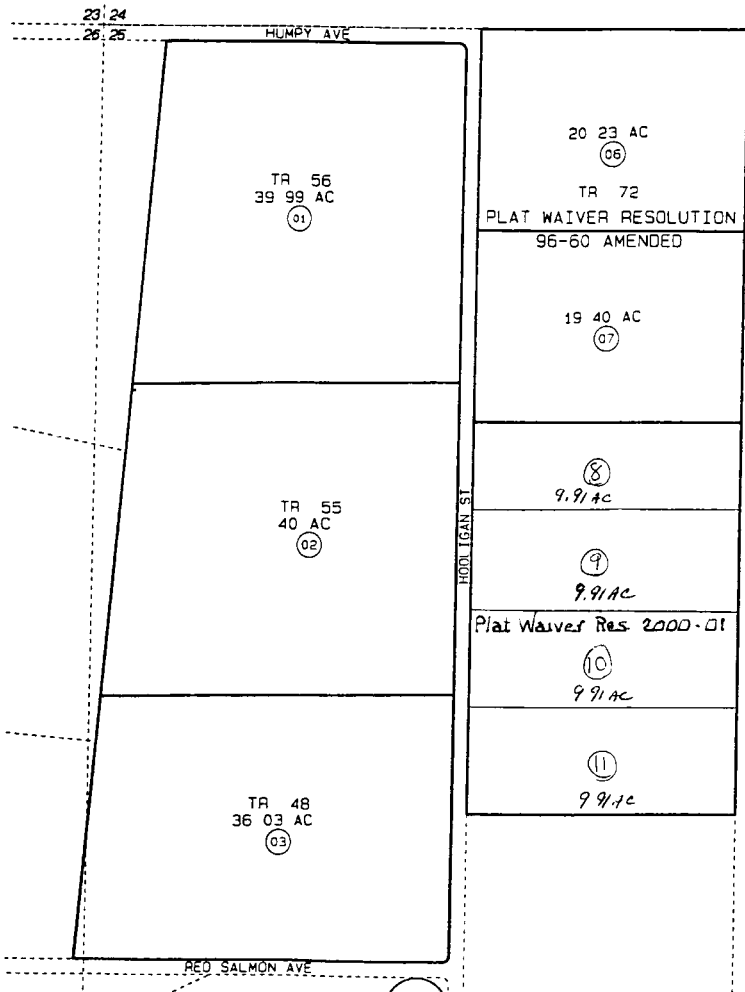
NW 1/4 SEC. 25, T7N, R11W, SEWARD MERIDIAN

017-324

BK  
13

323

BK  
13



DATE MAY 07, 2001  
~~NOV. 26, 1997~~

FOR 19 98 ASSESSMENT ROLL

DELETE    ADD    REVISED

TO	
5	8-7
4	8-11

Assessor's Map  
Kenai Peninsula Borough

KONOVALOF LAKE SUB AMENDED KN860203  
PLAT WAIVER RESOLUTION 96-60 AMENDED

326

THIS MAP IS PREPARED  
FOR KENAI PENINSULA  
BOROUGH ASSESSING DEPT  
USE ONLY AND IS NOT  
INTENDED FOR ANY  
OTHER USE OR REPRESENTATION

NOTE - Assessor's Block Numbers Shown in Ellipses  
Assessor's Parcel Numbers Shown in Circles

