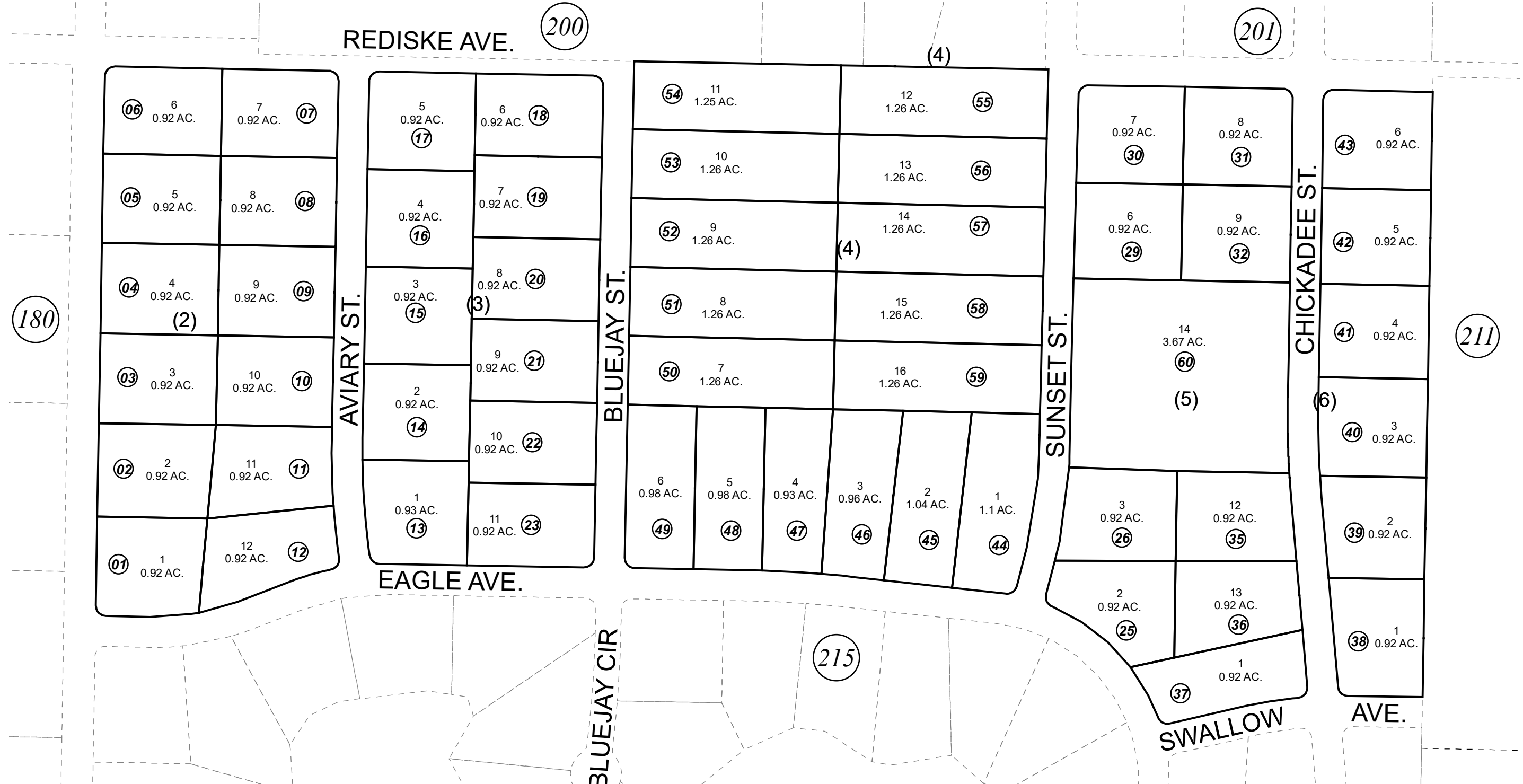
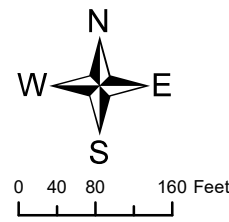


NE 1/4 SW 1/4 & NW1/4 SE1/4 SEC. 6, T07N, R11W, S.M.

013-214



MAY 30, 2019



For 2020 assessment roll		
Delete	Add	Revise
	To	
27,28	60	
33,34		

Assessor's Map
Kenai Peninsula Borough

KN0830044 DON'S PLACE SUB AMENDED
KN0830236 DON'S PLACE SUB ADDN 1
KN2019008 DON'S PLACE SUB HEAZLETT REPLAT

This map is prepared for Kenai Peninsula Borough Assessing Dept. use only and is not intended for conveyance nor is it a survey.

Note- Assessor's block Numbers Shown in Ellipses
Assessor's Parcel Numbers Shown in Circles