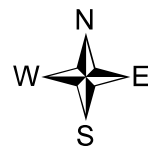
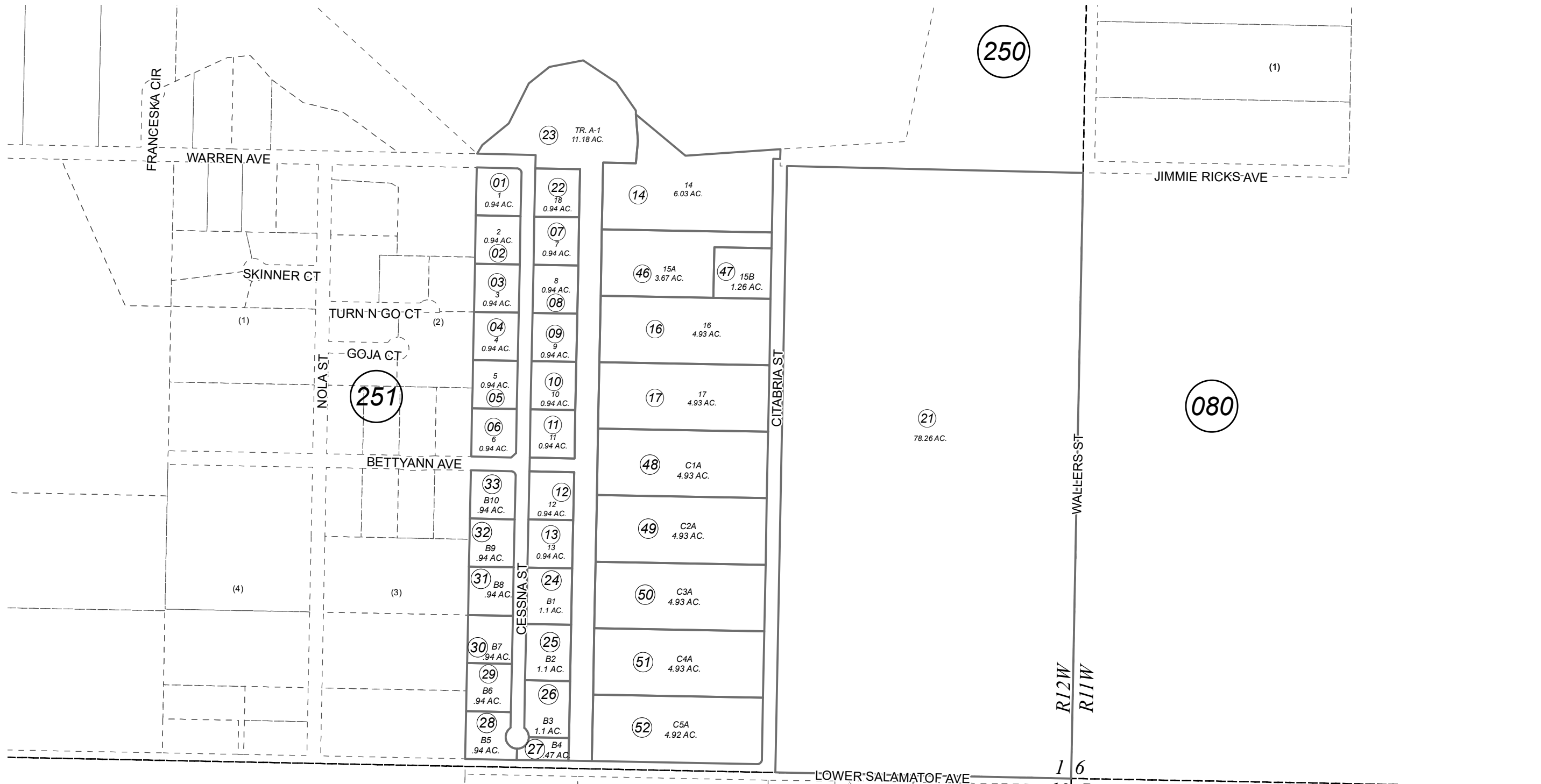


GOV'T. LOT 7 & POR. SE1/4 SEC. 1, T06N, R12W, S.M.

017-254



0 100 200 400 Feet

DATE: OCTOBER 12, 2023

For 2024 assessment roll

Delete	Add	Revise
	To	
34-45	48-52	

Assessor's Map  
Kenai Peninsula Borough

260

SALAMATOF AIR PARK KN0980075  
 SALAMATOF AIR PARK LUY ADDN KN2004106  
 SALAMATOF AIR PARK ALCAN ADDN NO 1 KN2008093  
 SALAMATOF AIR PARK ALCAN ADDN NO 2 KN2009014  
 SALAMATOF AIR PARK KUSTATAN LEASING ADDN KN2021001  
 SALAMATOF AIR PARK ALCAN 2022 REPLAT KN2023042

This map is prepared for Kenai Peninsula Borough Assessing Dept. use only and is not intended for conveyance nor is it a survey.

Note- Assessor's block Numbers Shown in Ellipses  
 Assessor's Parcel Numbers Shown in Circles