

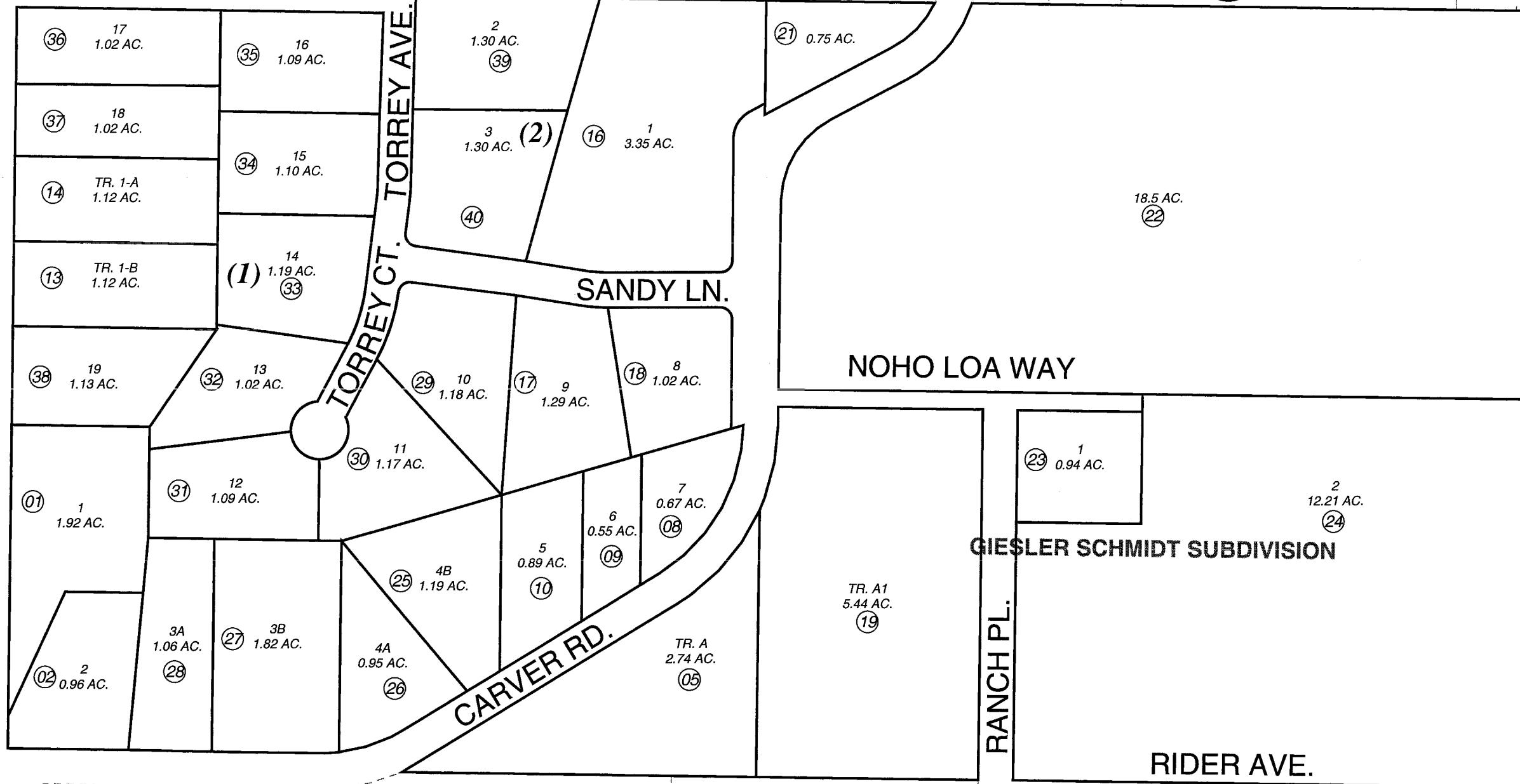
N1/2 NW1/4 SEC. 5, T05N, R10W, S.M.

057-210

MATRANGA ST.

010

260



010

601

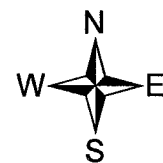
JULY 16, 2004

For 2005 assessment roll

Delete	Add	Revise
	To	
15	29-40	

Assessor's Map
Kenai Peninsula Borough

MATRANGA SUB KN0001569
 MATRANGA SUB RESUB OF TRACT 1 KN0001695
 GIESLER SCHMIDT SUB KN0750101
 MATRANGA SUB RESUB NO 2 OF TR 1 KN0780011
 MATRANGA SUB PART 1 RESUB NO 3 OF KN0790040
 GIESLER SCHMIDT SUB DMS ADDN KN0830201
 MATRANGA SUB NO 4 KN0860147
 MATRANGA SUB NO 5 KN0870071
 MATRANGA SUB BRIAN ADDN KN2004025



This map is prepared for Kenai Peninsula Borough Assessing Dept. use only and is not intended for conveyance nor is it a survey.

Note- Assessor's block Numbers Shown in Elipses
Assessor's Parcel Numbers Shown in Circles