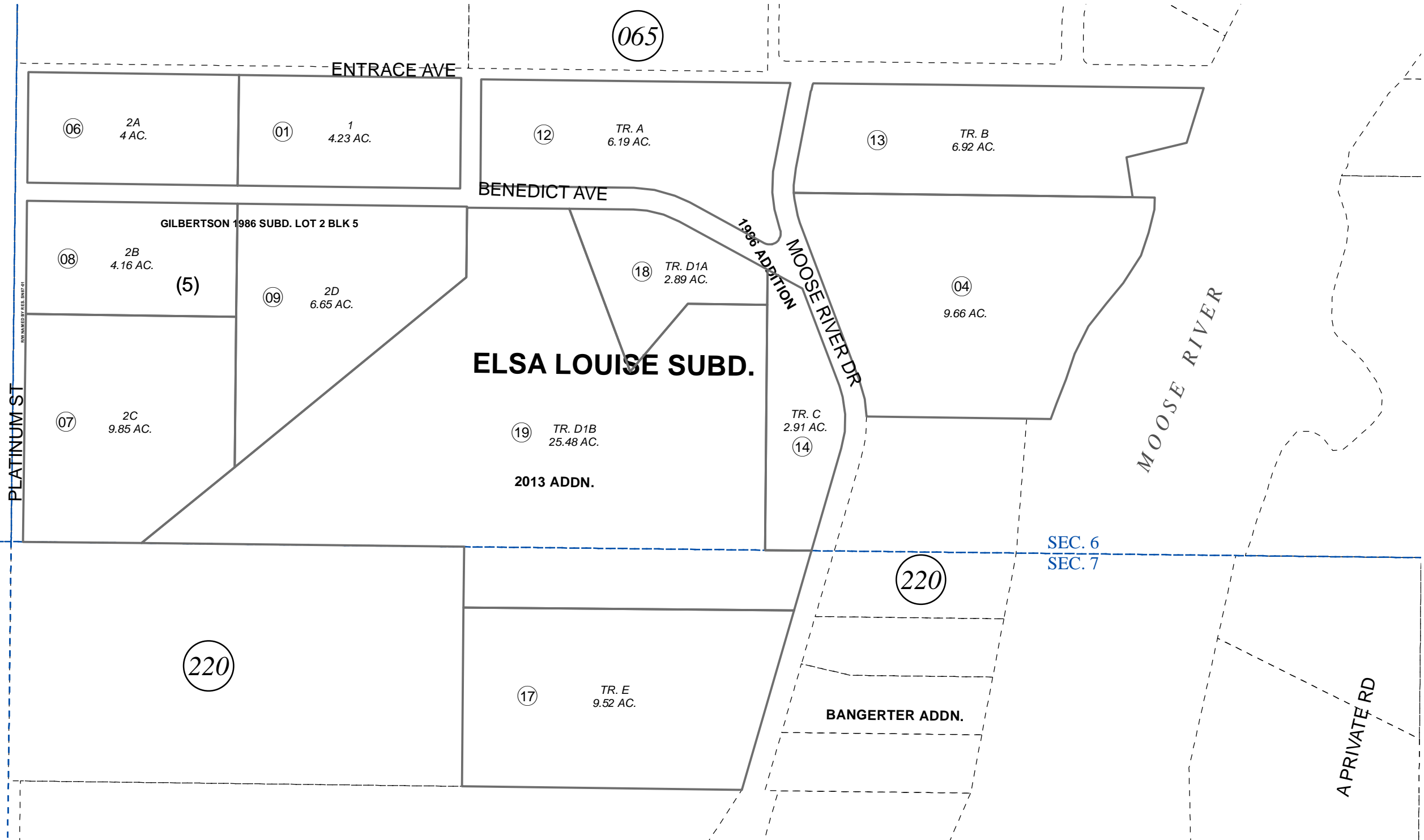


S 1/2 SW 1/4 SEC. 6 AND POR. NE 1/4 NW 1/4 SEC. 7, T05N, R08W, S.M.

065-221



JULY 3, 2014

For 2015 assessment roll		
Delete	Add	Revise
To		
16	18,19	



0 50 100 200 Feet

Assessor's Map  
Kenai Peninsula Borough

ELSA LOUISE SUB 1978 ADDN KN0850126  
 ELSA LOUISE SUB GILBERTSON 1986 SUB OF LOT 2 BLOCK 5 KN0870012  
 ELSA LOUISE SUB 1996 ADDN KN0970030  
 ELSA LOUISE SUB 1998 ADDN KN0980035  
 ELSA LOUISE SUB 2013 ADDN KN2014023

Note- Assessor's block Numbers Shown in Ellipses  
 Assessor's Parcel Numbers Shown in Circles

This map is prepared for Kenai Peninsula Borough Assessing Dept. use only and is not intended for conveyance nor is it a survey.