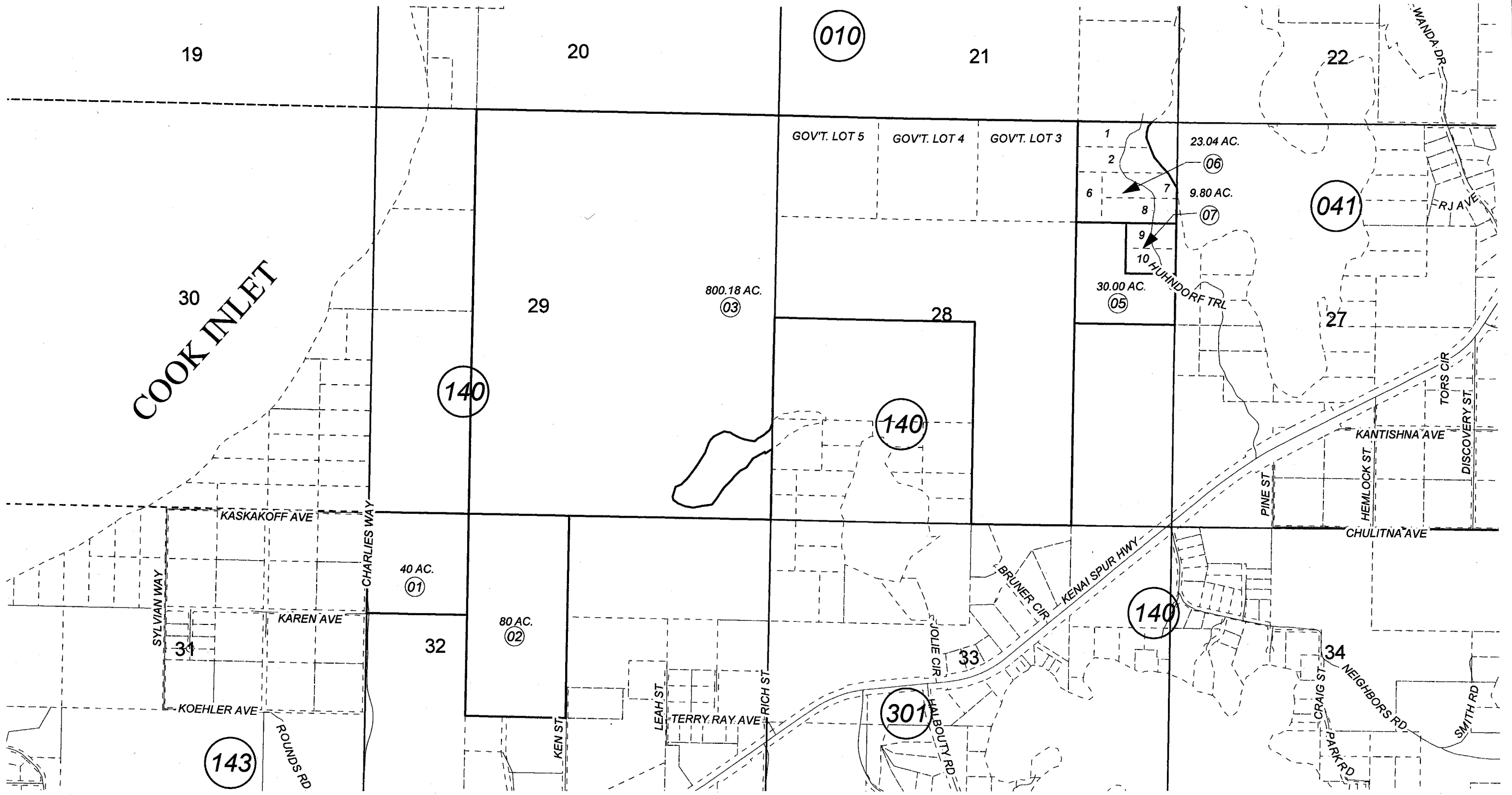


POR. SEC, 28,29 & 32, T08N, R11W, S.M.

013-145



JANUARY 6, 2009

For 2009 assessment roll

Delete	Add	Revise
To		
4	6,7	



Assessor's Map
Kenai Peninsula Borough

This map is prepared for Kenai Peninsula Borough Assessing Dept. use only and is not intended for conveyance nor is it a survey.

Note- Assessor's block Numbers Shown in Ellipses
Assessor's Parcel Numbers Shown in Circles