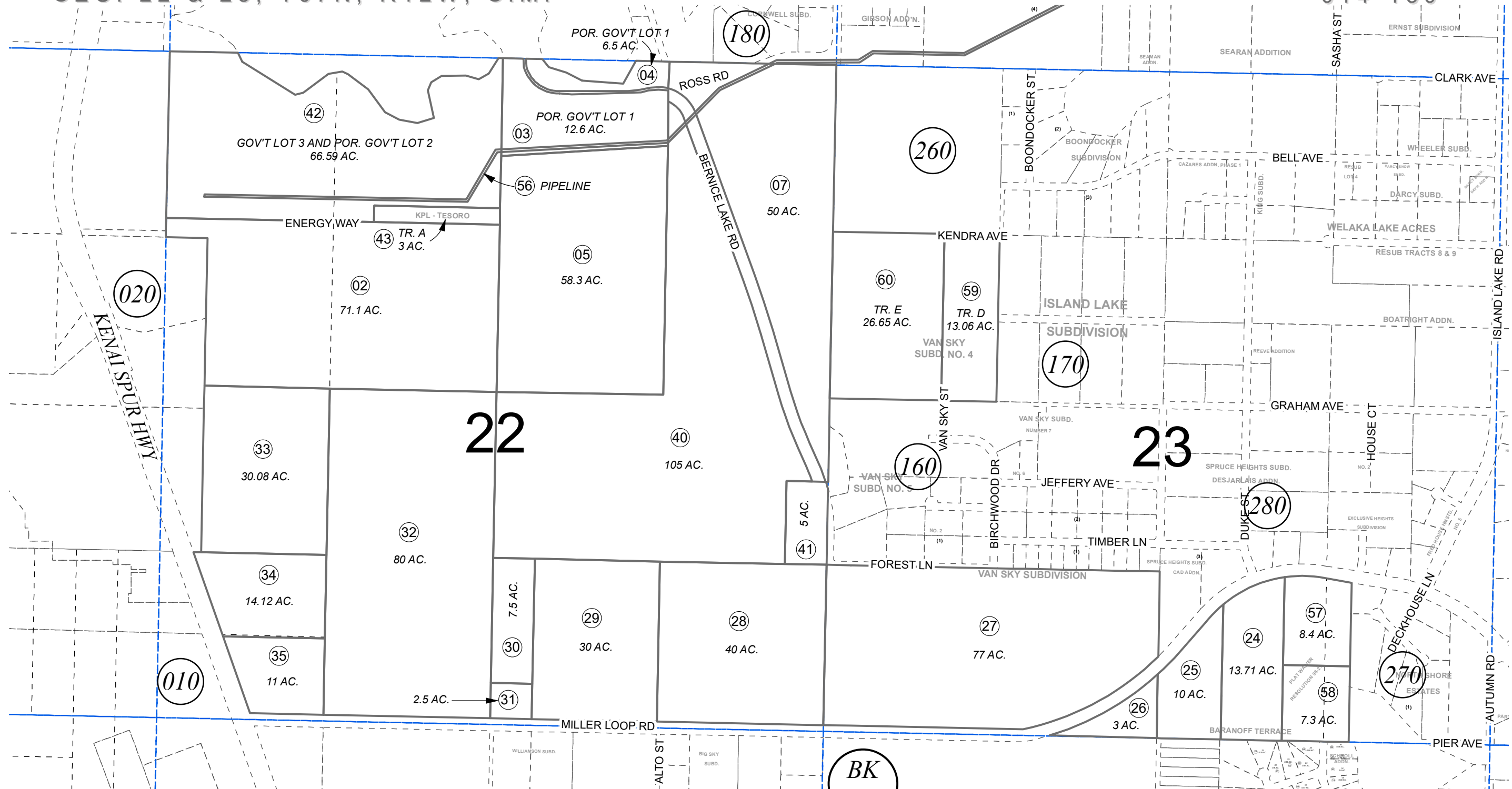


SEC. 22 & 23, T07N, R12W, S.M.

014-150



JUNE 12, 2023



0 200 400 800 Feet

For 2023 assessment roll		
Delete	Add	Revise
	To	56
(ADDED EXISTING PIN TO TAX PAGE)		

Assessor's Map  
Kenai Peninsula Borough

KPL TESORO SUB KN0860135  
 PLAT WAIVER RESOLUTION 98-21 KN0984284PW  
 VAN SKY SUBD. NO. 4 KN2009023  
 RECORD OF SURVEY KN2015060

This map is prepared for Kenai Peninsula Borough Assessing Dept. use only and is not intended for conveyance nor is it a survey.

Note- Assessor's block Numbers Shown in Ellipses  
 Assessor's Parcel Numbers Shown in Circles