

KN760072 SUNSHINE ESTATES SUB  
 KN800107 SUNSHINE ESTATES SUB NO 2  
 KN830145 SUNSHINE ESTATES SUB NO 3  
 KN850216 SUNSHINE ESTATES SUB HENSLEY ADDN  
 KN860202 SUNSHINE ESTATES SUB BURKS ADDN  
 KN990011 SUNSHINE ESTATES SUB JOHNSON ADDN  
 KN990016 SUNSHINE ESTATES PETERSON REPLAT

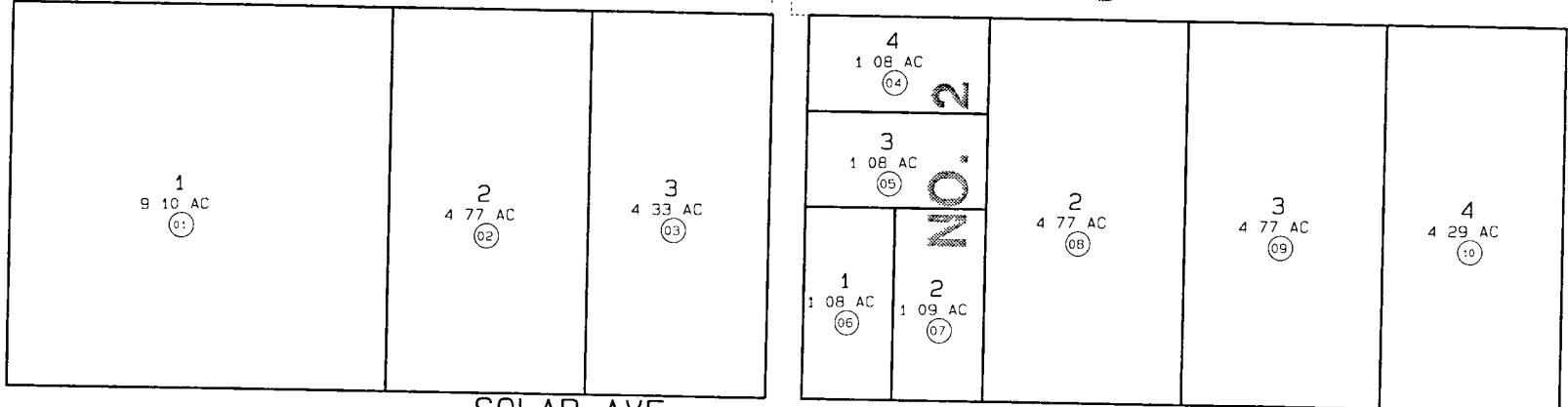
S1/2 NE1/4 SEC. 25, T7N, R12W, SEWARD MERIDIAN

015-171

# SUNSHINE ESTATES

R12W  
R17W

15

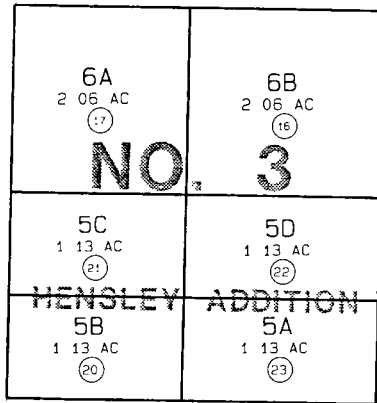


BK  
13

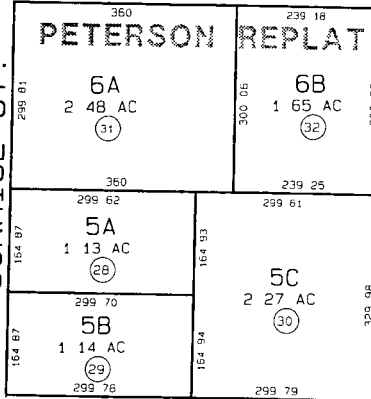
SOLAR AVE.

(RES SN 97-06)

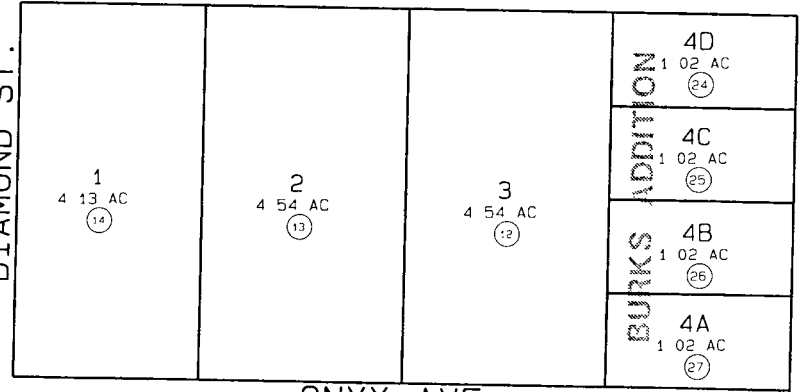
SUNSHINE ST.



SUNRISE ST.



DIAMOND ST.



EMERALD AVE.

JOHNSON ADDITION

ONYX AVE.

DATE AUG. 12, 1999

FOR 2000 ASSESSMENT ROLL

DELETE ADD REVISED

TO  
15 31,32

Assessor's Map  
Kenai Peninsula Borough

172

THIS MAP IS PREPARED FOR KENAI PENINSULA BOROUGH ASSESSING DEPT USE ONLY AND IS NOT INTENDED FOR CONVEYANCE NOR IS IT A SURVEY  
 NOTE - Assessor's Block Numbers Shown in Ellipses  
 Assessor's Parcel Numbers Shown in Circles